



# Directional Control Valves Catalog

## Directional Manual, Rotary, 2-Position, 2-Way

### CP620-1

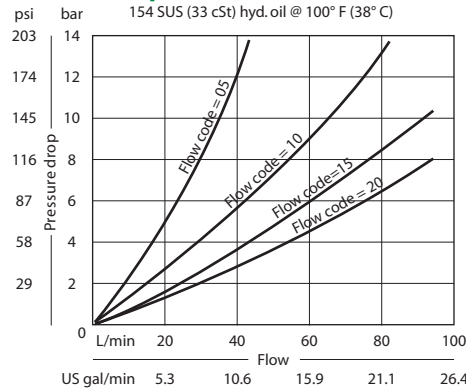
### OPERATION

This valve is a non-compensated, adjustable flow control.

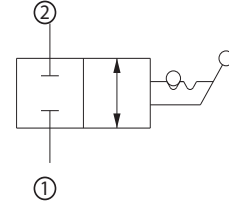
Refer to application notes for installation details.

### SPECIFICATIONS

#### Theoretical performance



### Schematic



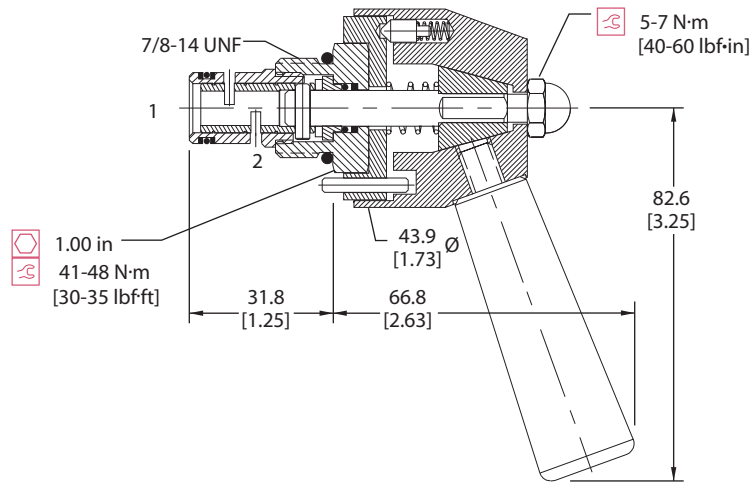
### Specifications

Rated pressure	210 bar [3000 psi]
Rated flow at 7 bar [100 psi]	75 l/min [20 US gal/min]
Leakage	82 cm <sup>3</sup> /min [5 in <sup>3</sup> /min] @ Rated pressure
Weight	0.31 kg [0.69 lb]
Cavity	SDC10-2

### DIMENSIONS

mm [in]

#### Cross-sectional view



### ORDERING INFORMATION

**CP620 - 1 - B - 8S - 20 - 2 - DR**

<p><b>Seals</b></p> <p>B - Buna-N V - Viton</p> <p><b>Housing and ports</b></p> <p>0 = No Housing DG3B = AL, 3/8 BSP DG4B = AL, 1/2 BSP 6S = AL, #6 SAE 8S = AL, #8 SAE Other housings available</p>	<p><b>Seal kit</b></p> <p>120073 120074</p> <p><b>Housing P/N</b></p> <p>No Housing SDC10-2-DG-3B SDC10-2-DG-4B CP10-2-6S CP10-2-8S</p>	<p><b>Flow</b></p> <p>05 = 19 l/min [5 US gpm] 10 = 38 l/min [10 US gpm] 15 = 57 l/min [15 US gpm] 20 = 77 l/min [20 US gpm]</p>	<p><b>Rotation to close</b></p> <p>R - Clockwise L - Counterclockwise</p> <p><b>Detent</b></p> <p>D = Detent with handle K = Knob (not shown) knob is not detented</p> <p><b>Position</b></p> <p>2 - 2 Position detent 3 - 3 Position detent 10 - 10 Position detent</p>
--	---	--	--

DV - Directional Control Valves CP620-1