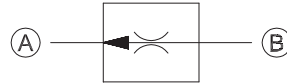


**OPERATION**

This is an in-line restrictive type flow control valve.

**Schematic**



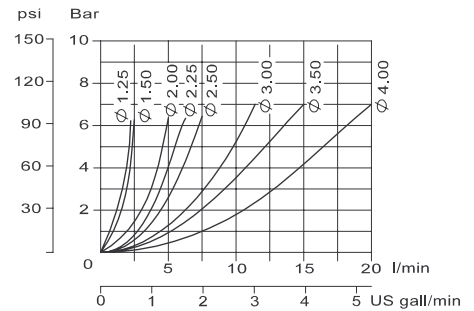
**SPECIFICATIONS**

**Specifications**

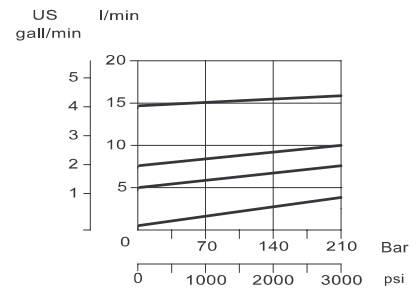
<b>Pressure rating</b>	210 bar [3000 psi]
<b>Max regulated flow</b>	16 l/min [4.2 US gal/min]
<b>Cavity</b>	Consult factory

**Theoretical performance**

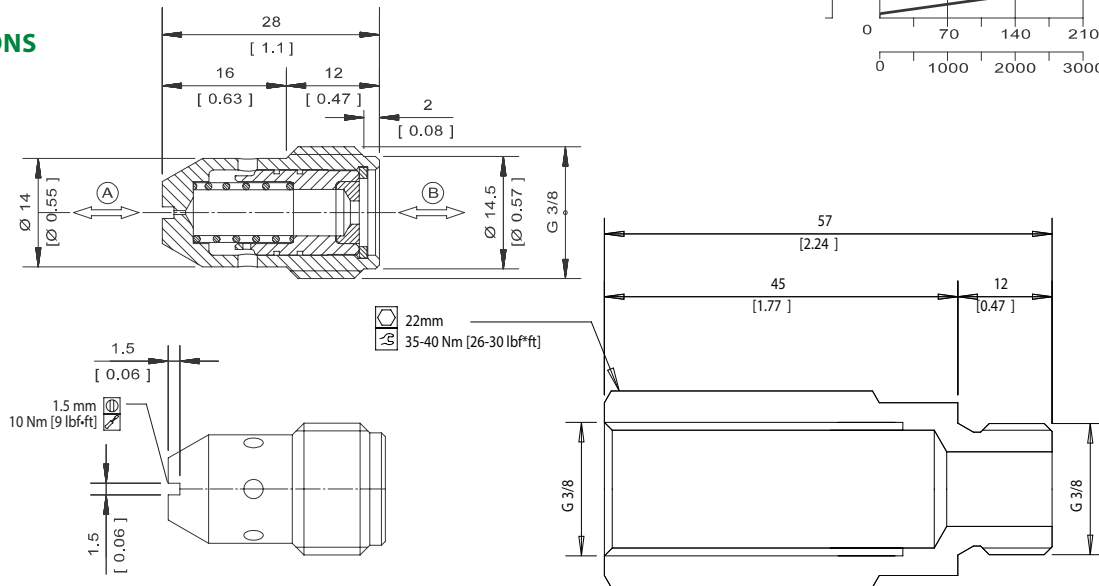
Pressure drop from A ⇒ B according to orifice diameter  
 26 cSt [121 SUS] hyd.oil at 50°C [122 °F]



Variation in controlled flow from B ⇒ A according to pressure  
 26 cSt [121 SUS] hyd.oil at 50°C [122 °F]



**DIMENSIONS**



**ORDERING INFORMATION**

SC10 - 1.25 - G - 00

Orifice diameter mm	Flow at 100 bar [1450 psi] l/min [US gal/min]	Notes
1.25	2.0 [0.53]	00 = Cartridge only L = 3/8 BSP
1.50	3.0 [0.79]	
2.00	4.0 [1.06]	
2.25	5.0 [1.32]	
2.50	6.0 [1.59]	
3.00	9.0 [2.38]	
3.50	11.0 [2.91]	
4.00	16.0 [4.23]	