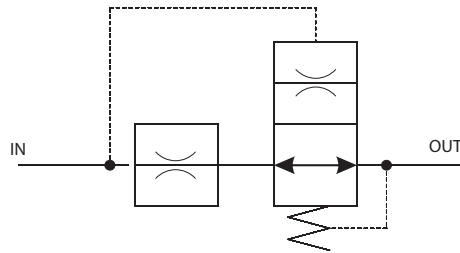


OPERATION

This is an in-line flow limiter that closes and then provides non-compensated restricted flow when the specified flow setting is exceeded. The valve provides free reverse flow when operated in the opposite direction.

SPECIFICATIONS

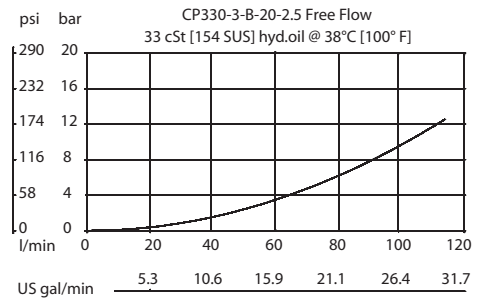
Schematic



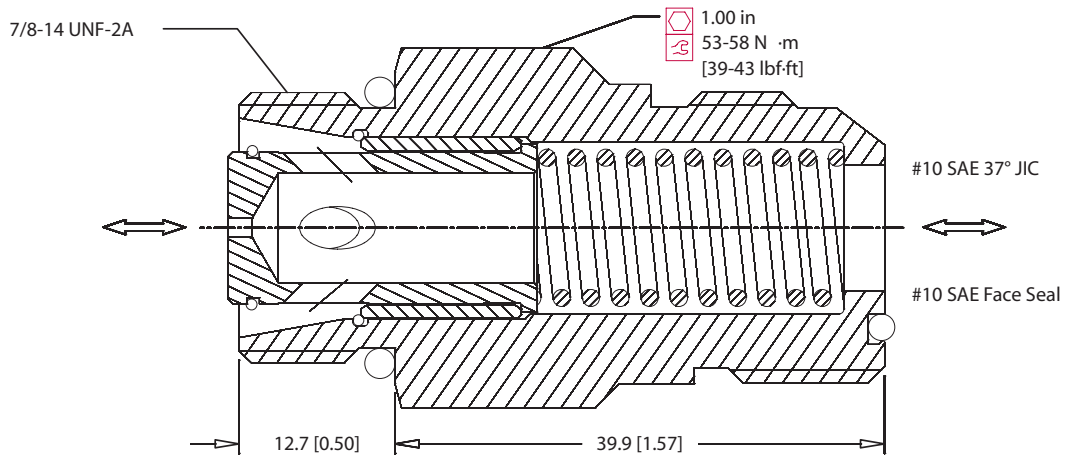
Specifications

Pressure rating	207 bar 3000 psi
Max Trip Flow	110 l/min 29 US gal/min
Bypass Flow	9.5 lpm 2.5 gal/min
Weight	0.12 kg 0.26 lbs
Cavity	#10 SAE Port

Specifications



DIMENSIONS



ORDERING INFORMATION

CP330-3-B-FS10-17-2.5

Seals B = BUNA-N V = VITON	Fitting Type Omit = #10SAE37° JIC FS10 = #10SAE face seal	Bypass Flow @ 48 bar [700 psi] I/min USgal/min 2.5 = 9.5 2.5	Flow Setting I/min USgal/min 17 = 64.4 17 20 = 75.7 20 23 = 87.1 23 26 = 98.4 26 29 = 109.8 29
----------------------------------	---	--	--