

OPERATION

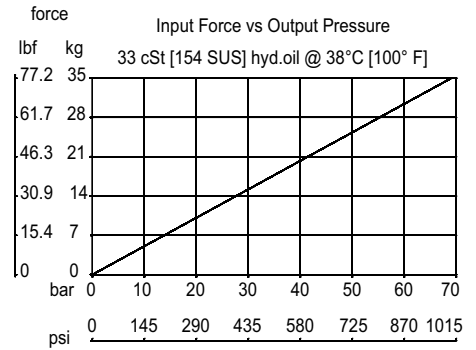
This is a manually operated uni-directional pump.

SPECIFICATIONS

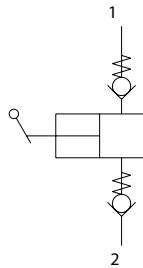
Specifications

| | |
|------------------------|----------------------------------|
| Pressure rating | 207 bar [3000 psi] |
| Displacement | 1.2 cu. cm [0.07 cu. in.]/stroke |
| Leakage | 6 drops/min @ rated pressure |
| Weight | 0.24 kg [0.52 lbs] |
| Cavity | SDC 10-2 |
| Pump force | 34N [7.7lbs] |

Performance Curve

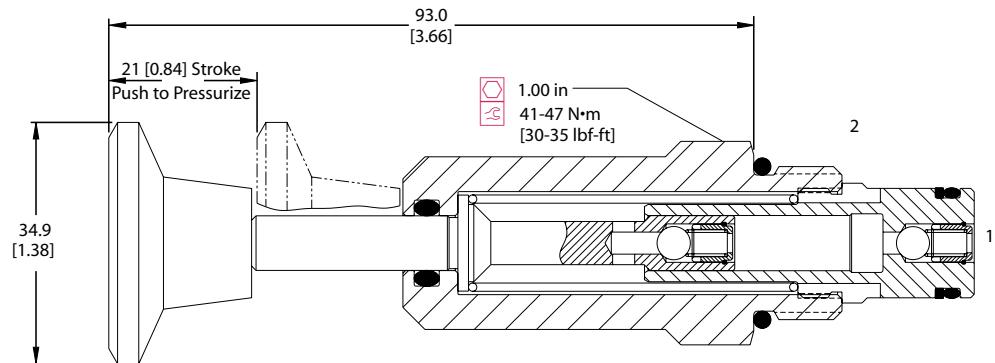


Schematic



DIMENSIONS

mm [in]



ORDERING INFORMATION

| | | | |
|---------------------|--------------------------|--|---------------|
| CP600-5-B-6S | | | |
| Seals | Housing & Ports | | Housing P/N |
| B = Buna-N | 0 = Cartridge only | | No Housing |
| V = Viton | 6S = AL, #6 SAE | | CP10-2-6S |
| | 8S = AL, #8 SAE | | CP10-2-8S |
| | DG3B = AL, 3/8 BSPP | | SDC10-2-DG-3B |
| | DG4B = AL, 1/2 BSPP | | SDC10-2-DG-4B |
| | Other housings available | | |