

OPERATION

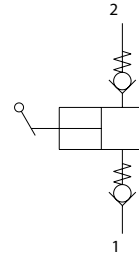
Manually operated pump.

SPECIFICATIONS

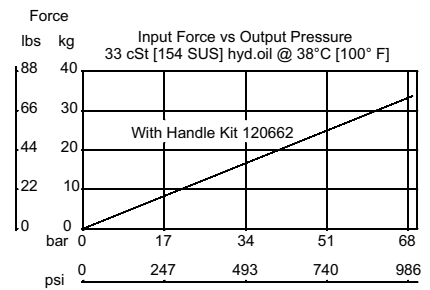
Specifications

Pressure rating	207 bar [3000 psi]
Displacement	9.2 cm ³ [0.56 in ³] / stroke
Leakage	6 drops/ minute @ rated pressure
Cavity	SDC16-2

Schematic



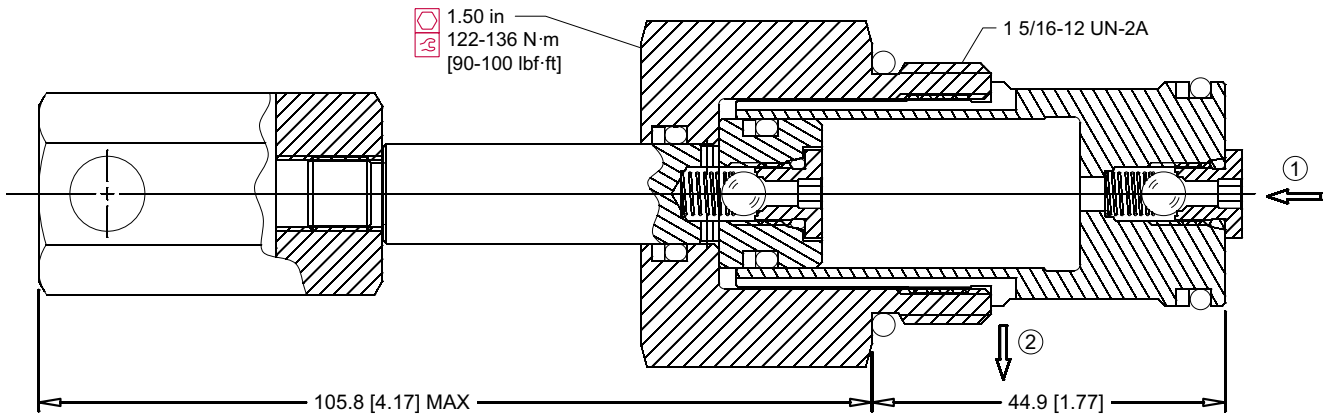
Performance Curve



DIMENSIONS

Cross section

mm [in]



ORDERING INFORMATION

CP602-5-B-12S			
Seals	Sealkit	Housing and Ports	Housing P/N
B = Buna-N	120019	0 = No Housing	No Housing
V = Viton	120030	6S = #6 SAE	11083731
		8S = #8 SAE	11083691
		12S = AL#12SAE	CP16-2-12S
		16S = AL#16SAE	CP16-2-16S
		6B = AL3/4 BSPP	CP16-2-6B
		8B = AL,1 BSPP	CP16-2-8B
		Other housings available	
<p>Handle kit is required - sold separately PN - 120662</p>			