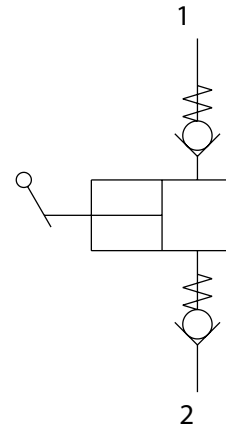


**SPECIFICATIONS**

Specifications

<b>Size</b>		06	12
<b>Displacement Per Stroke</b>	<b>cm<sup>3</sup></b>	0.94	5
	<b>[in<sup>3</sup>]</b>	[0.057]	[0.305]
<b>Max. pressure</b>	<b>bar</b>	315	315
	<b>[psi]</b>	[4569]	[4569]
<b>NCS Cavity</b>		06/2	12/2
<b>Max tightening torque</b>	<b>Nm</b>	40	80
	<b>[lbf·in]</b>	[354]	[708]
<b>Weight</b>	<b>cartridge</b>	<b>kg</b>	0.254
		<b>[lb]</b>	[0.560]
	<b>cartridge with handle</b>	<b>kg</b>	0.550
		<b>[lb]</b>	[1.213]
	<b>with housing</b>	<b>kg</b>	0.854
		<b>[lb]</b>	[1.883]

Schematic



**Description**

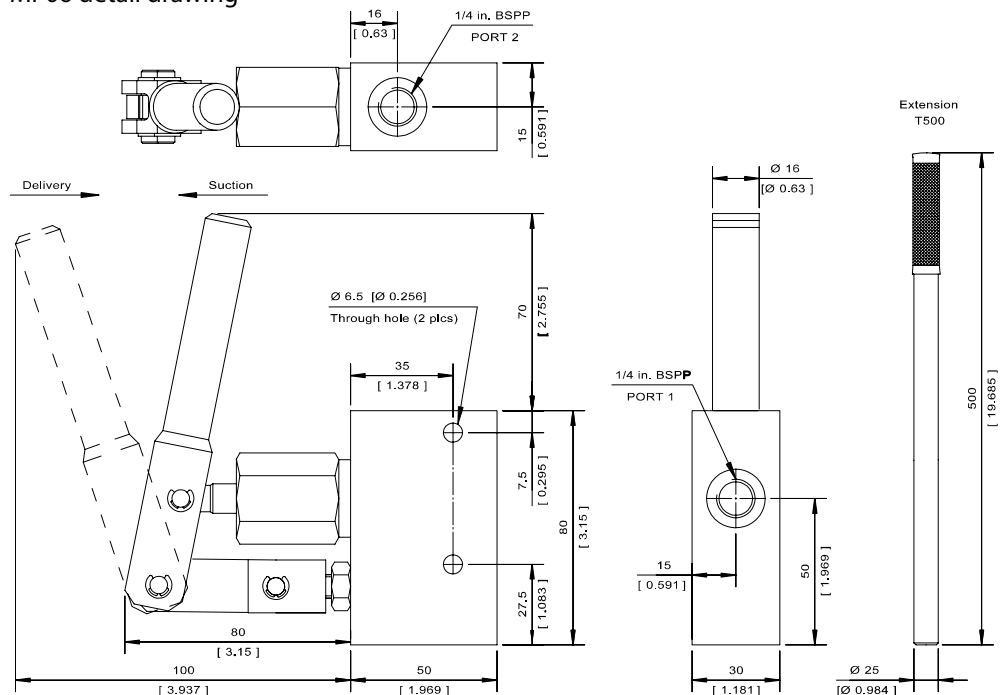
These small displacement hand pumps are used typically for piloting the operation of small hydraulic cylinders or valves. These pumps can be mounted inline using the standard housing or in special blocks. For smooth operation, inlet lines should not be excessively long, and the vertical distance between pump and tank level no more than 300 mm.

These pumps can work in outdoor applications if the ambient air is not contaminated by powder and dust.

**DIMENSIONS**

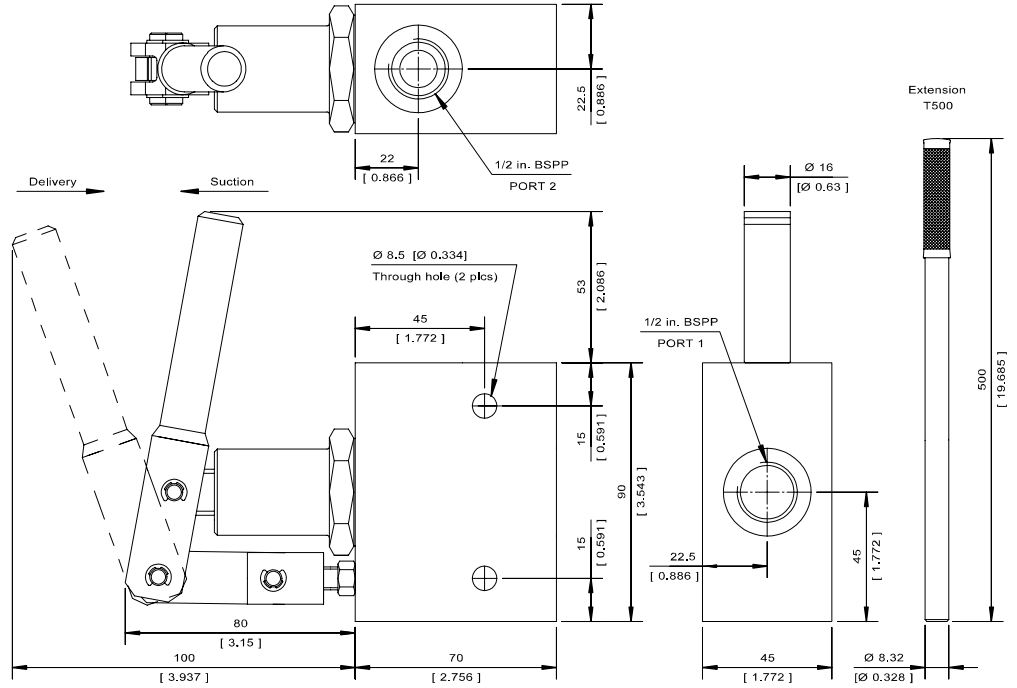
mm [in]

MP06 detail drawing



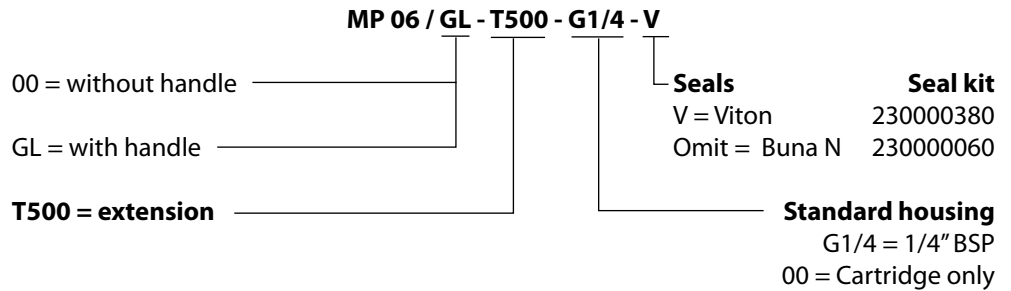
**DIMENSIONS**  
 (continued)  
 mm [in]

MP12 detail drawing



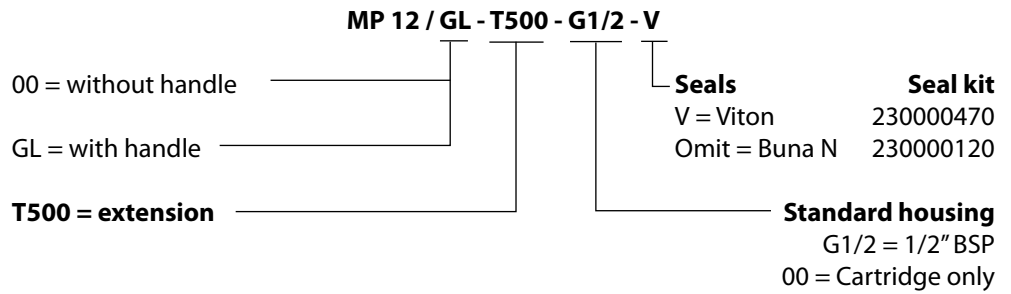
**ORDERING INFORMATION**

**Example of designation MP 06**



Housing Part #502500313

**Example of designation MP 12**



Housing Part #502500613