

OPERATION

The VLP 12/P2 is a metric 12-size, normally-closed, vent-to-open, poppet-type, double-blocking, spring biased differential-sensing logic element. It will provide on/off flow control from 1 to 2 based on the spring control pressure, inlet pressure at port 1, and pilot pressure at port 3.

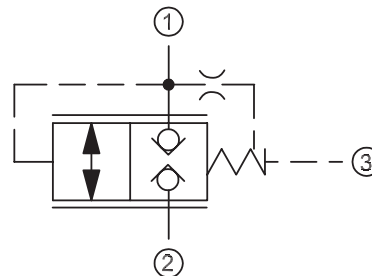
APPLICATION

The valve provides on/off, leakage-free control in both directions, suitable for use as a high flow relief valve when used with a relief valve to pilot. Common applications include: pump unloading, pilot-operated relief valve, sequence valve and selector circuit. Effective use of logic elements is a key to designing cost-effective circuits, and is limited only by the imagination of the designer.

SPECIFICATION

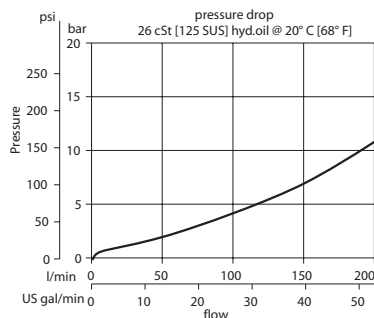
Rated pressure	315 bar [4500 psi]
Rated flow at 7 bar [100 psi]	160 l/min [42 US gal/min]
Weight	0.30 kg [0.66 lb]
Cavity	NCS12/3
Bias spring	2 bar [29 psi]

SCHEMATIC



PERFORMANCE CURVE

Theoretical performance



LE - Logic Elements
 VLP 12/P2

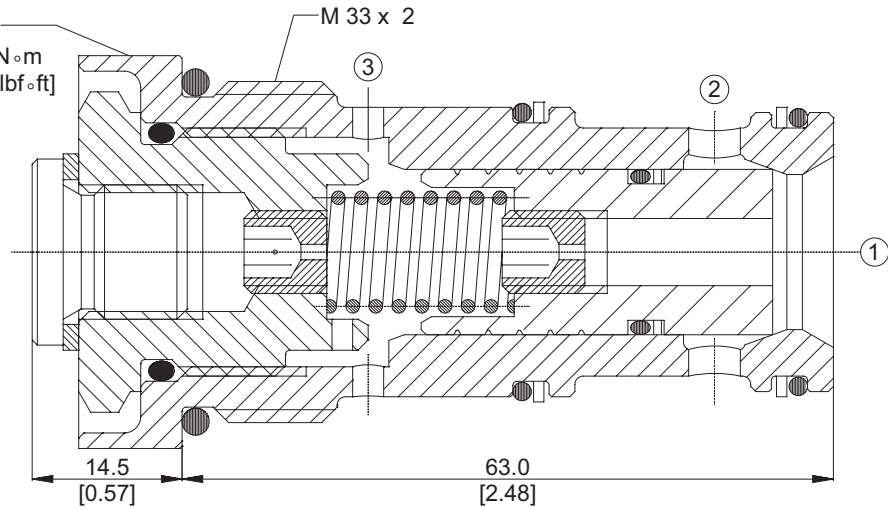
DIMENSION

mm [in]

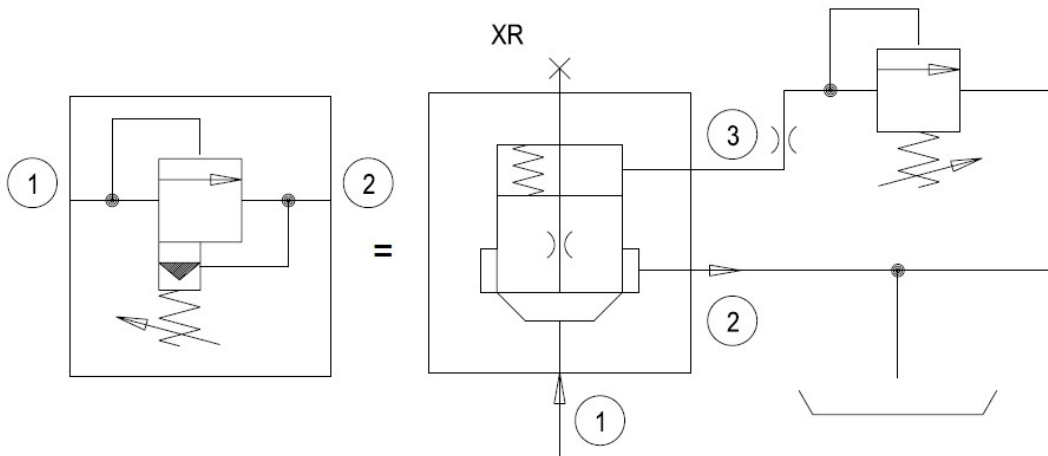


38 mm
 64-70 N·m
 [47-52 lbf·ft]

Cross-sectional view



EXAMPLE CIRCUITS



ORDERING INFORMATION

VLP 12/P2 - B - SE8S - V

Seals

V = Viton
 Omit = Buna-N

Seal kit

230000360
 230000130

Housing and ports

00 = No Housing
 SE1/2 = AL, 1/2 BSP
 SE3/4 = AL, 3/4 BSP
 SE8S = AL, #8 SAE
 SE12S = AL, #12SAE
 Other housings available

Housing P/N

No Housing
 NCS12/3-SE-1/2
 NCS12/3-SE-3/4
 NCS12/3-SE-8S
 NCS12/3-SE-12S