

**OPERATION**

The VLP 12/C1 is a metric 12-size, normally-closed, vent-to-open, poppet-type, spring biased differential-sensing logic element. It will provide on/off flow control from 1 to 2 based on the spring control pressure, inlet pressure at port 1, and pilot pressure at port 3.

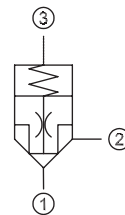
**APPLICATION**

The valve provides on/off, leakage-free control, suitable for use as a high flow relief valve when piloted with a relief valve or a high flow unloading solenoid when piloted with a small solenoid valve. Common applications include: pump unloading, pilot-operated relief valve, sequence valve and selector circuit. Effective use of logic elements is a key to designing cost-effective circuits, and is limited only by the imagination of the designer.

**SPECIFICATION**

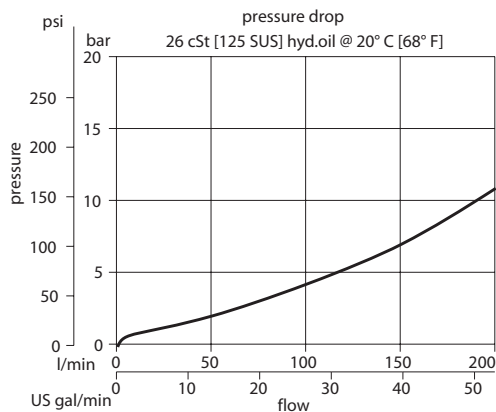
<b>Rated pressure</b>	315 bar [4500 psi]
<b>Rated flow at 7 bar [100 psi]</b>	160 l/min [42 US gal/min]
<b>Weight</b>	0.30 kg [0.66 lb]
<b>Cavity</b>	NCS12/3
<b>Bias spring</b>	2 bar [29 psi]

**SCHEMATIC**





**PERFORMANCE CURVE**

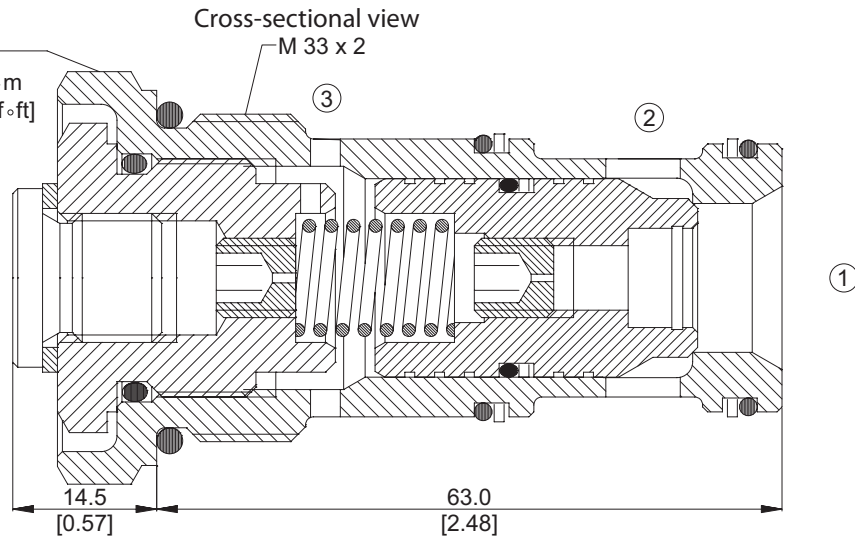
Theoretical performance



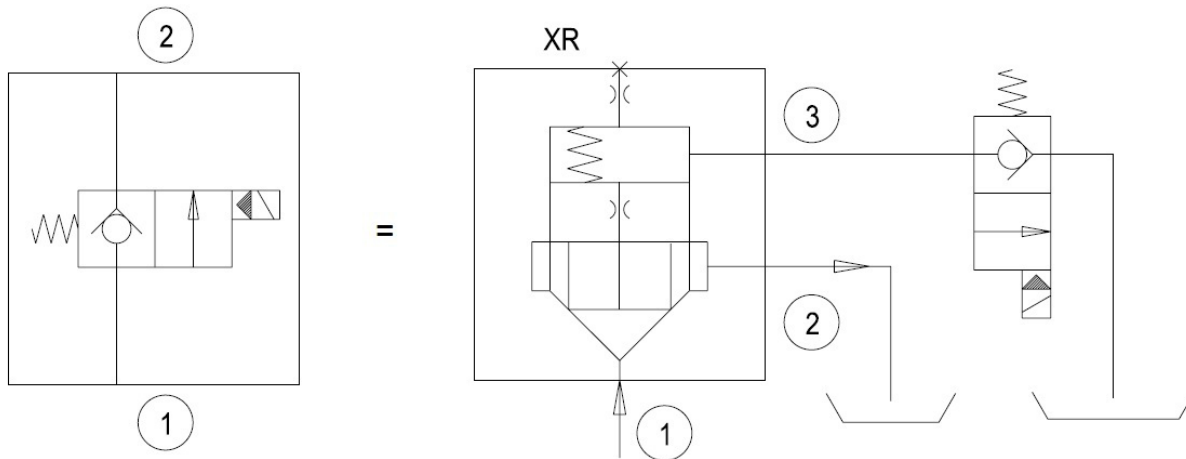
**DIMENSION**

mm [in]

-  38 mm
-  64-70 N·m [47-52 lbf·ft]



**EXAMPLE CIRCUITS**



**ORDERING INFORMATION**

VLP 12/C2 - B - SE8S - V

**Seals**

- V = Viton
- Omit = Buna-N

**Seal kit**

- 230000360
- 230000130

**Housing and ports**

- 00 = No Housing
- SE1/2 = AL, 1/2 BSP
- SE3/4 = AL, 3/4 BSP
- SE8S = AL, #8 SAE
- SE12S = AL, #12SAE
- Other housings available

**Housing P/N**

- No Housing
- NCS12/3-SE-1/2
- NCS12/3-SE-3/4
- NCS12/3-SE-8S
- NCS12/3-SE-12S