



**OPERATION**

The HLEA10-CPC is a 10-size, high pressure, normally-closed, pilot-to-close, spring biased differential-sensing logic element that includes an adjustable compensator feature. It will modulate flow from 1 to 2 based on the spring control pressure, inlet pressure at port 1, and pilot pressure at port 3.

**APPLICATION**

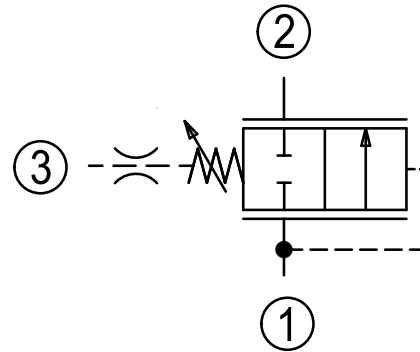
Common applications include load-sensing bypass compensator for a fixed displacement pump with single or multiple actuators as well as bypass-type pressure-compensated flow control. Effective use of logic elements is a key to designing cost-effective circuits, and is limited only by the imagination of the designer.

**SPECIFICATION**

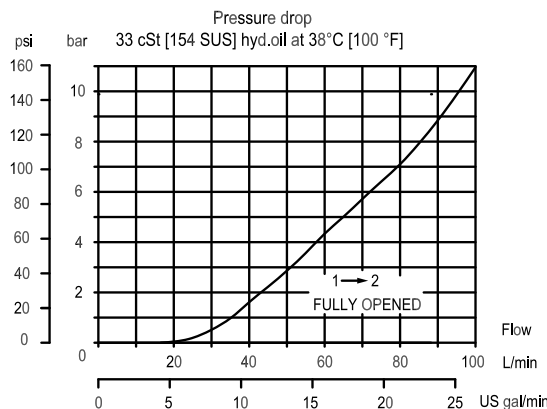
Rated Pressure*	350 bar [5075 psi]
Rated Flow at 7 bar [100 psi]	80 l/min [21.1 US gal/min]
Weight	0.29 kg [0.64 lbs]
Cavity	SDC10-3S

\* Rated Pressure based on NFPA fatigue test standards (at 1 Million Cycles).

**SCHEMATIC**

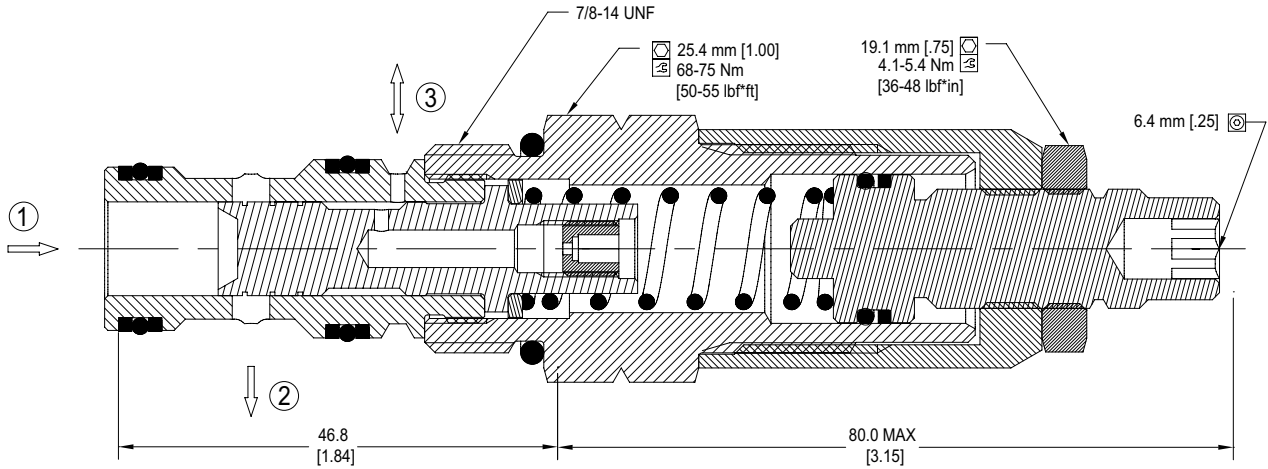


**PERFORMANCE CURVE**

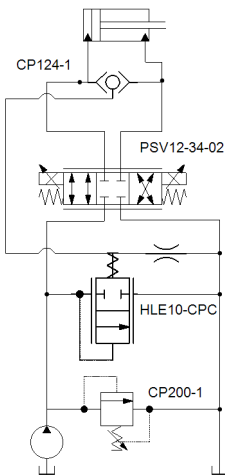


\* INCLUDES SDC10-3S CAVITY WITH SAE #8 PORTS

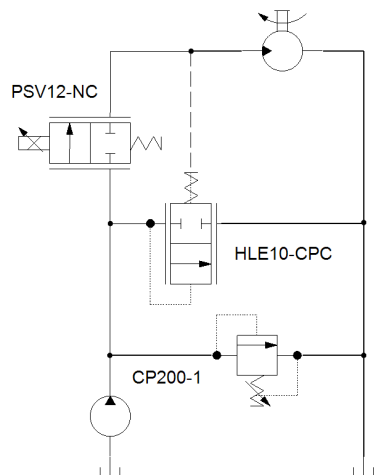
**DIMENSION**



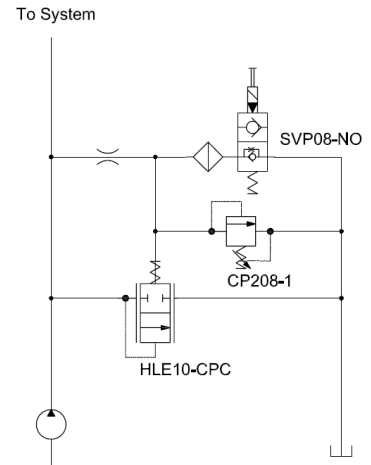
**EXAMPLE CIRCUITS**



Double Acting Cylinder with Proportional Speed Control, Unloading Valve and Circuit Relief



Proportional Bypass Flow Control



Dump and Relief Valve for a Fixed Pump

**ORDERING INFORMATION**

**HLEA10:**  
High flow, high pressure logic element, adjustable 10-size

**CPC:**  
Normally closed, pilot to close

**Adjustment Option:**  
E = External

**Differential Pressure Control Setting:**  
7.5 = 7.5 bar [110 psi]  
XXX = STD SETTING (without stamping)  
Range 2.75 to 15.0 bar [40 psi to 220 psi]

**HLEA10 - CPC - E - 7.5 - B - 00**

Housings & Ports	Housing P/N
00: Cartridge Only	No Body
3B: AL, 3/8 BSP	SDC10-3S-3B
4B: AL, 1/2 BSP	SDC10-3S-4B
6S: AL #6 SAE	SDC10-3S-6S
8S: AL #8 SAE	SDC10-3S-8S

Code	Seal Material	Seal kit
B	Buna	11126248
V	Viton	11126249

LE - Logic Elements  
HLEA10-CPC