



OPERATION

The HLEA10-CVO is a 10-size, high pressure, normally closed, vent-to-open, spring-biased differential-sensing logic element that includes an adjustable compensator feature. It will modulate flow from 1 to 2 based on the spring control pressure, inlet pressure at port 1, and pilot pressure at port 3.

APPLICATION

Common applications include: pump unloading, pilot-operated relief valve (mechanical or proportional), sequence valve and selector circuit. The adjustability of the HLEA10 allows the operator to change the compensator setting of the logic element, ranging from 2.75 to 15.2 bar (40 to 220 psi). This is especially helpful when fine tuning the applications, providing flexibility to the operator and allowing for machine optimization

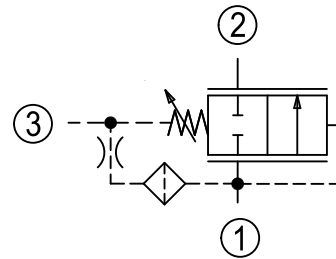
LE - Logic Elements
 HLEA10-CVO

SPECIFICATION

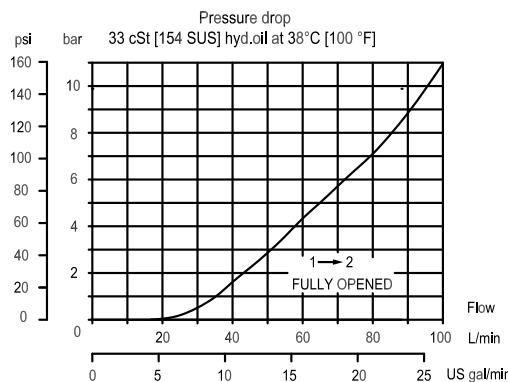
Rated pressure	350 bar [5075 psi]
Rated flow at 7 bar [100 psi]	80l/min [21 US gal/min]
Weight	0.29 kg [0.64 lb]
Cavity	SDC10-3S

*Rated Pressure based on NFPA fatigue test standards (at 1 Million Cycles).

SCHEMATIC

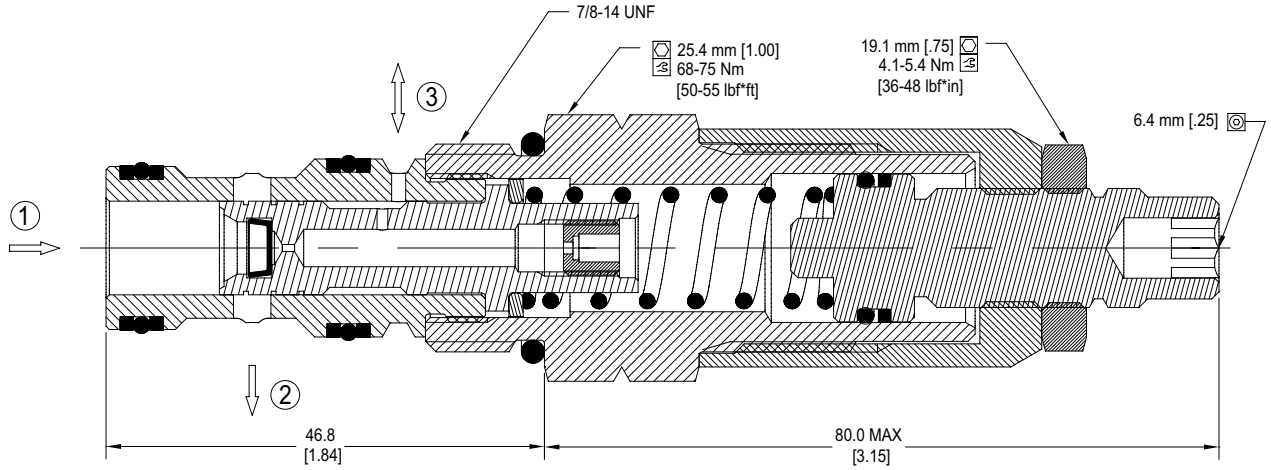


PERFORMANCE CURVE

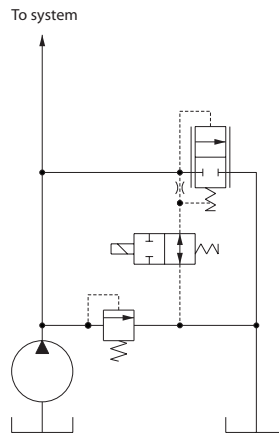
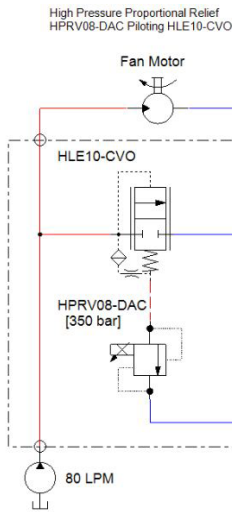


* INCLUDES SDC10-3S CAVITY WITH SAE #8 PORTS

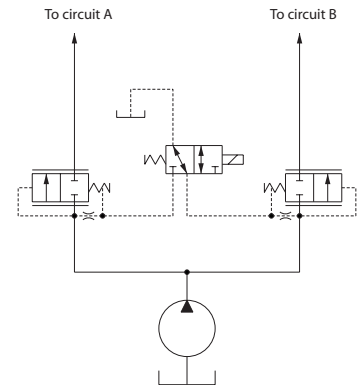
DIMENSION



EXAMPLE CIRCUITS



Pump unloading



Selector valve

ORDERING INFORMATION

HLEA10 - CVO - E - 7.5 - B - 00

HLEA10:
 High flow, high pressure logic element, adjustable 10-size

CVO:
 Normally closed, vent to open

Adjustment Option:
 E = External

Differential Pressure Control Setting:
 7.5 = 7.5 bar [110 psi]
 XXX = STD SETTING (without stamping)
 Range 2.75 to 15.0 bar [40 psi to 220 psi]

Housings & Ports		Housing P/N
00:	Cartridge Only	No Body
3B:	AL, 3/8 BSP	SDC10-3S-3B
4B:	AL, 1/2 BSP	SDC10-3S-4B
6S:	AL #6 SAE	SDC10-3S-6S
8S:	AL #8 SAE	SDC10-3S-8S

Code	Seal Material	Seal kit
B	Buna	11126248
V	Viton	11126249