



**OPERATION**

The HLEA10-OPO is a 10-size, high pressure, normally open, pilot-to-open, spring-biased differential-sensing logic element that includes an adjustable compensator feature. It will modulate flow from 2 to 1 based on the spring control pressure, inlet pressure at port 1, and pilot pressure at port 3.

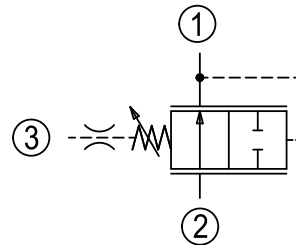
**APPLICATION**

The adjustability of the HLEA10 allows the operator to change the compensator setting of the logic element, ranging from 2.75 to 15.2 bar (40 to 220 psi). This is especially helpful when fine tuning the applications, providing flexibility to the operator and allowing for machine optimization.

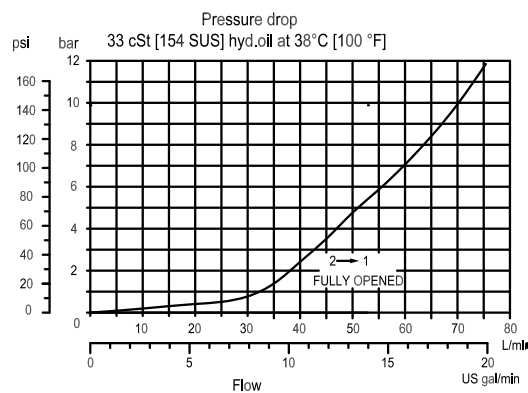
**SPECIFICATION**

Rated pressure	350 bar [5075 psi]
Rated flow at 7 bar [100 psi]	60 l/min [16 US gal/min]
Weight	0.29 kg [0.64 lb]
Cavity	SDC10-3S

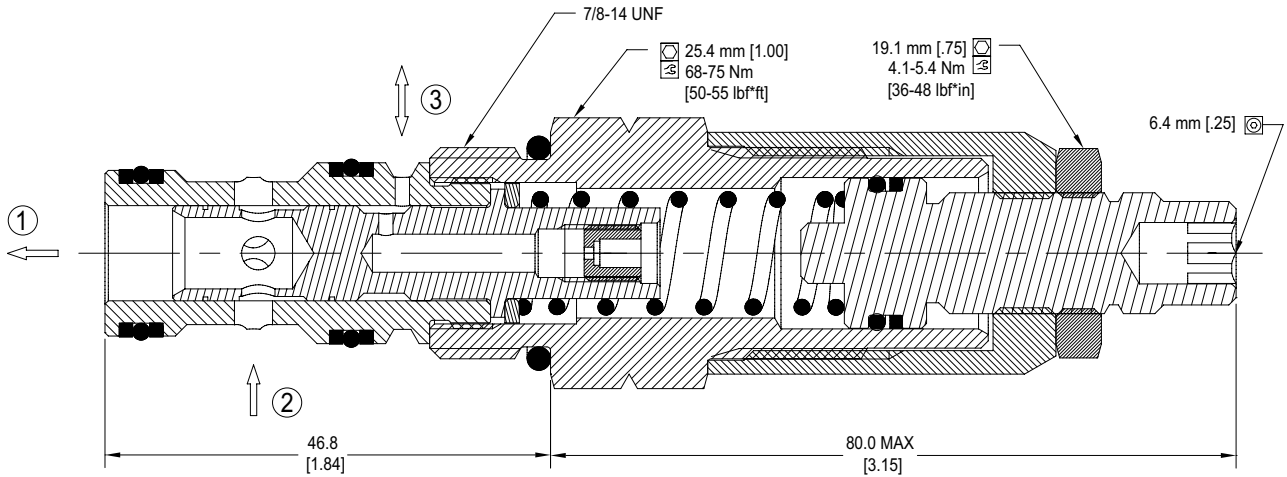
**SCHEMATIC**



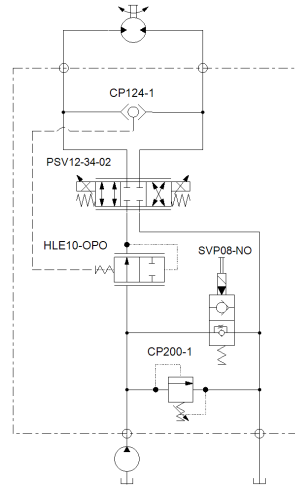
**PERFORMANCE CURVE**



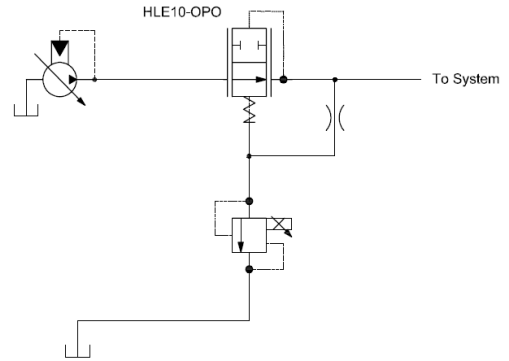
**DIMENSION**



**EXAMPLE CIRCUITS** Compensated Bi-directional Flow Control



Proportional Pressure Reducing Valve



**ORDERING INFORMATION**

**HLEA10:**  
 High flow, high pressure  
 logic element, adjustable  
 10-size

**OPO:**  
 Normally open,  
 pilot to open

**Adjustment Option:**  
 E = External

**Differential Pressure Control Setting:**  
 7.5 = 7.5 bar [110 psi]  
 XXX = STD SETTING (without stamping)  
 Range 2.75 to 15.0 bar [40 psi to 220 psi]

**HLEA10 - OPO - E - 7.5 - B - 00**

Housings & Ports	Housing P/N
00: Cartridge Only	No Body
3B: AL, 3/8 BSP	SDC10-3S-3B
4B: AL, 1/2 BSP	SDC10-3S-4B
6S: AL #6 SAE	SDC10-3S-6S
8S: AL #8 SAE	SDC10-3S-8S

Code	Seal Material	Seal kit
B	Buna	11126248
V	Viton	11126249