

**OPERATION**

The CP700-1 is a 10-size, normally-closed, pilot-to-close, spool-type, spring biased differential-sensing logic element. It will modulate flow from 1 to 2 based on the spring control pressure, inlet pressure at port 1, and pilot pressure at port 3.

**APPLICATION**

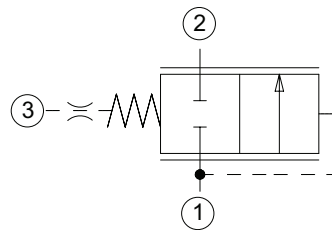
Common applications include load-sensing bypass compensator for a fixed displacement pump with single or multiple actuators as well as bypass-type pressure-compensated flow control. Effective use of logic elements is a key to designing cost-effective circuits, and is limited only by the imagination of the designer.



**SPECIFICATION**

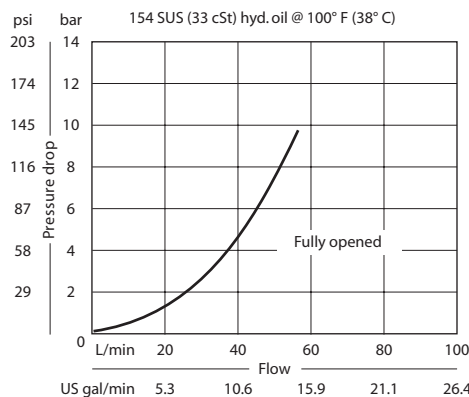
Rated pressure	210 bar [3000 psi]
Rated flow at 7 bar [100 psi]	50 l/min [13 US gal/min]
Weight	0.12 kg [0.27 lb]
Cavity	SDC10-3

**SCHEMATIC**



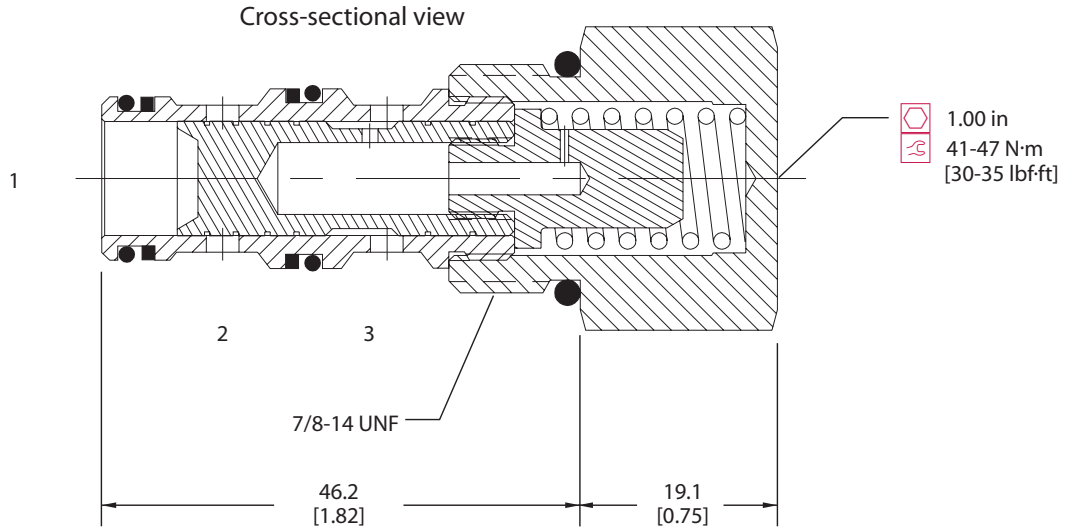
**PERFORMANCE CURVE**

Theoretical performance

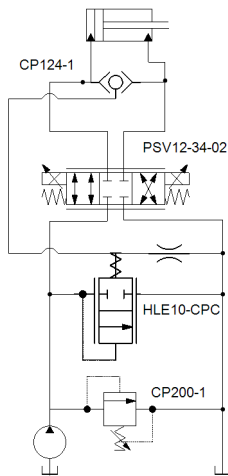


LE - Logic Elements  
 CP700-1

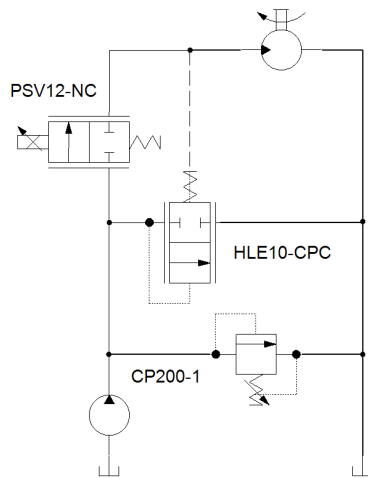
**DIMENSION**  
 mm [in]



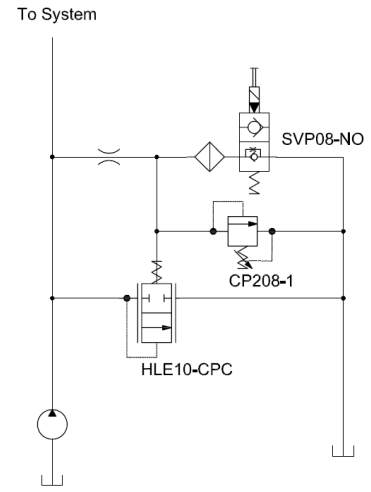
**EXAMPLE CIRCUITS**



Double Acting Cylinder with  
 Proportional Speed Control,  
 Unloading Valve and Circuit Relief



Proportional Bypass Flow Control



Dump and Relief Valve for a Fixed Pump

**ORDERING  
 INFORMATION**

**CP700 - 1 - B - 8S - 080**

<b>Seals</b>	Seal kit 120027 120028	<b>Differential Control Pressure</b>
B = Buna-N		bar [psi]
V = Viton		040 = 2.8 [40]
		080 = 5.5 [80]
		110 = 7.6 [110]
		150 = 10.3 [150]
		190 = 13.1 [190]

<b>Housing and ports</b>	<b>Housing P/N</b>
0 = No Housing	No Housing
SE3B = AL, 3/8 BSP	SDC10-3-SE-3B
SE4B = AL, 1/2 BSP	SDC10-3-SE-4B
6S = AL, #6 SAE	CP10-3-6S
8S = AL, #8 SAE	CP10-3-8S
Other housings available	

LE - Logic Elements  
 CP700-1