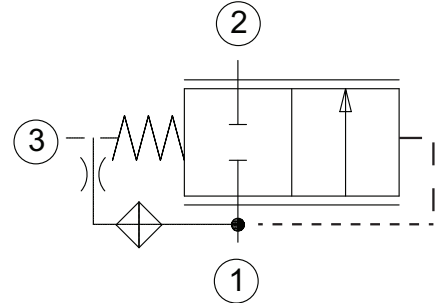


OPERATION

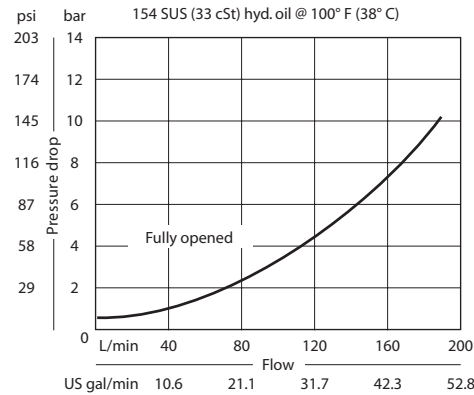
This is a spool-type logic element with multi-function potential when used with other pressure, flow, or direction control devices.

Schematic



SPECIFICATIONS

Theoretical performance



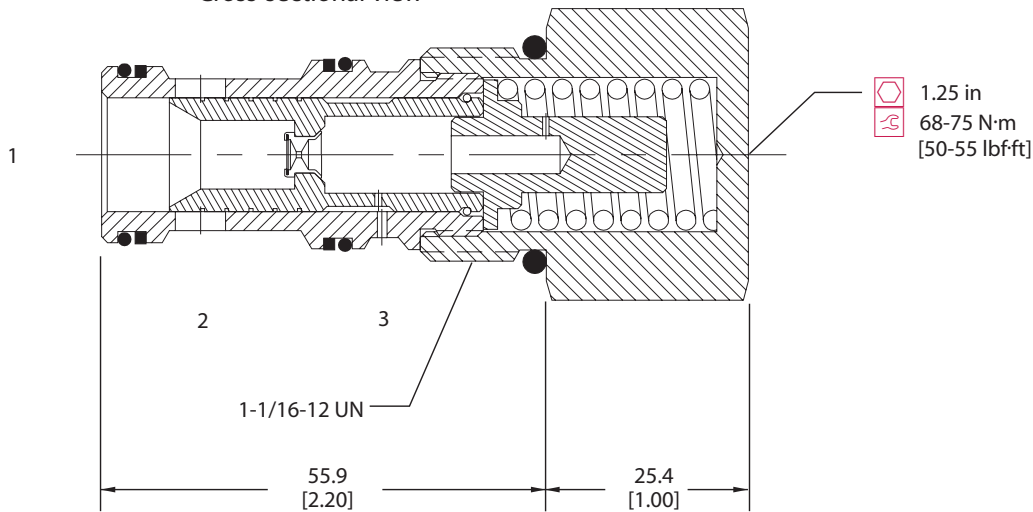
Specifications

Rated pressure	210 bar [3000 psi]
Rated flow at 7 bar [100 psi]	150 l/min [40 US gal/min]
Weight	0.26 kg [0.57 lb]
Cavity	CP12-3S

DIMENSIONS

mm [in]

Cross-sectional view



ORDERING INFORMATION

CP701 - 2 - B - 12S - 080

Seals

B = Buna-N
 V = Viton

Seal kit
 120335
 120336

Housing and ports

0 = No housing
 4B = AL, 1/2 BSP
 6B = AL, 3/4 BSP
 10S = AL, #10 SAE
 12S = AL, #12 SAE
 other housings available

Housing P/N

No housing
 CP12-3S-4B/2B = 1/4 BSP
 CP12-3S-6B/2B = 1/4 BSP
 CP12-3S-10S/4S = #4 SAE
 CP12-3S-12S/4S = #4 SAE

Pilot port

Differential Control Pressure

	bar	[psi]
030	2.1	[30]
050	3.5	[50]
080	5.5	[80]
100	6.9	[100]
150	10.3	[150]