

OPERATION

The CP700-3 is a 10-size, normally open, pilot-to-close, spring-biased differential-sensing logic element. It will modulate flow from 2 to 1 based on the spring control pressure, inlet pressure at port 1, and outlet pressure at port 3.

APPLICATION

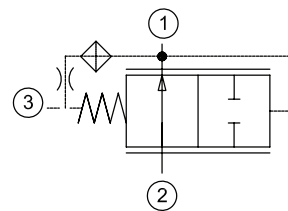
Common applications include: high-flow pressure reducing valve when using a small relief valve (like CP208-1), or a proportional relief valve (like PRV08-DAC) as a pilot element. Effective use of logic elements is a key to designing cost-effective circuits, and is limited only by the imagination of the designer.



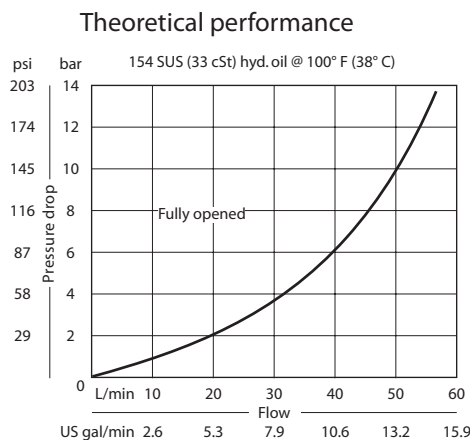
SPECIFICATION

Rated pressure	210 bar [3000 psi]
Rated flow at 7 bar [100 psi]	40 l/min [11 US gal/min]
Weight	0.13 kg [0.28 lb]
Cavity	SDC10-3

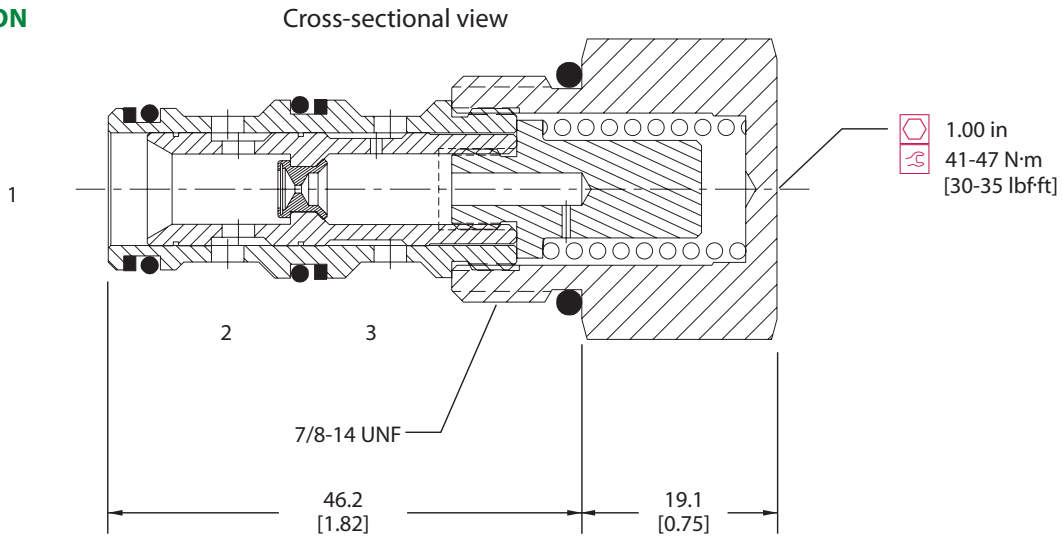
SCHEMATIC



PERFORMANCE CURVE

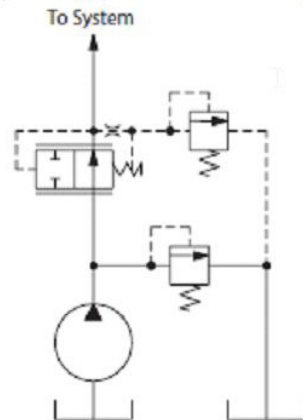


DIMENSION
 mm [in]



EXAMPLE CIRCUITS

Pilot-operated pressure reducing valve



ORDERING INFORMATION

CP700 - 3 - B - 8S - 080

Seals

B = Buna-N
 V = Viton

Housing and ports

0 = No Housing
 SE3B = AL, 3/8 BSP
 SE4B = AL, 1/2 BSP
 6S = AL, #6 SAE
 8S = AL, #8 SAE
 Other housings available

Seal kit

120027
 120028

Housing P/N

No Housing
 SDC10-3-SE-3B
 SDC10-3-SE-4B
 CP10-3-6S
 CP10-3-8S

Differential Control Pressure

bar	[psi]
040	= 2.8 [40]
080	= 5.5 [80]
110	= 7.6 [110]
150	= 10.3 [150]
200	= 13.8 [200]