

OPERATION

The CP701-3 is a 12-size, normally open, pilot-to-close, spring-biased differential-sensing logic element. It will modulate flow from 2 to 1 based on the spring control pressure, inlet pressure at port 1, and outlet pressure at port 3.

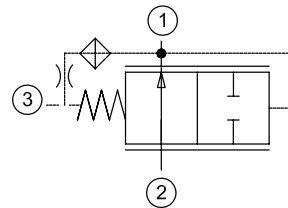
APPLICATION

Common applications include: high-flow pressure reducing valve when using a small relief valve (like CP208-1), or a proportional relief valve (like PRV08-DAC) as a pilot element. Effective use of logic elements is a key to designing cost-effective circuits, and is limited only by the imagination of the designer.

SPECIFICATION

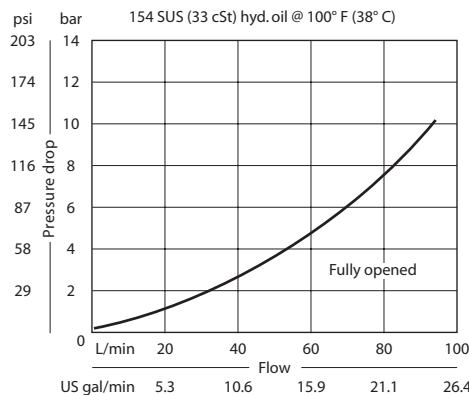
Rated pressure	210 bar [3000 psi]
Rated flow at 7 bar [100 psi]	80 l/min [21 US gal/min]
Weight	0.26 kg [0.57 lb]
Cavity	CP12-3S

SCHEMATIC



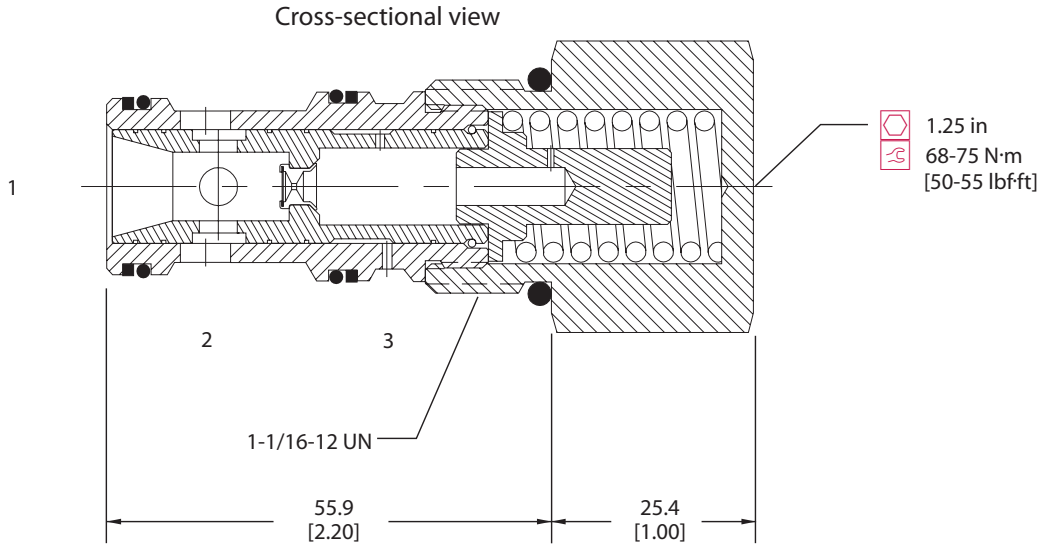
PERFORMANCE CURVE

Theoretical performance



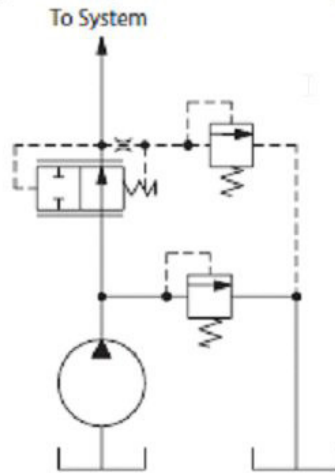
DIMENSION

mm [in]



EXAMPLE CIRCUITS

Pilot-operated pressure reducing valve



ORDERING INFORMATION

CP701 - 3 - B - 12S - 080

Seals	Seal kit 120335 120336	Differential Control Pressure
B = Buna-N		bar [psi]
V = Viton		030 = 2.1 [30]
		050 = 3.5 [50]
		080 = 5.5 [80]
		100 = 6.9 [100]
		150 = 10.3 [150]
Housing and ports	Housing P/N	Pilot port
0 = No housing	No housing	
4B = AL, 1/2 BSP	CP12-3S-4B/2B = 1/4 BSP	
6B = AL, 3/4 BSP	CP12-3S-6B/2B = 1/4 BSP	
10S = AL, #10 SAE	CP12-3S-10S/4S = #4 SAE	
12S = AL, #12 SAE	CP12-3S-12S/4S = #4 SAE	