

**OPERATION**

The CP310-6 is a 10-size, load sense, priority, static, pressure compensator. The valve will provide on-demand priority flow to port 2 in the required amount (dependent on the load sense pressure on port 1), allowing the excess flow to go to auxiliary functions through port 3.

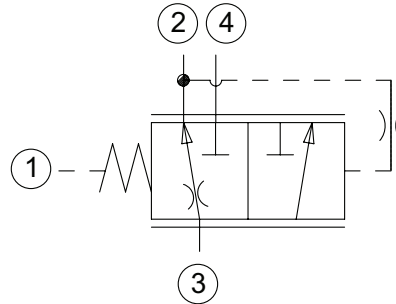
**APPLICATION**

Common applications include steering circuits that require pre-compensated, priority flow to go to the steering system, and the excess flow will go to an auxiliary function, like a fan motor. To obtain dynamic load sensing (priority type pre-comp) add in orifice between ports 2 and 1 in the manifold. This provides faster response and is commonly used in steering to flush out LS line. See Circuit Example.

**SPECIFICATION**

<b>Rated pressure</b>	210 bar [3000 psi]
<b>Rated flow at 7 bar [100 psi]</b>	40 l/min [11 US gal/min]
<b>Weight</b>	0.15 kg [0.33 lb]
<b>Cavity</b>	SDC10-4

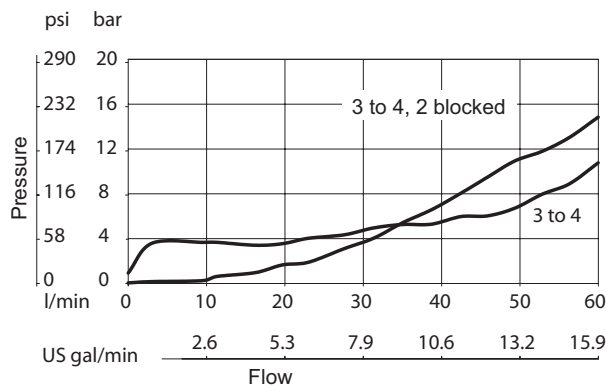
**SCHEMATIC**



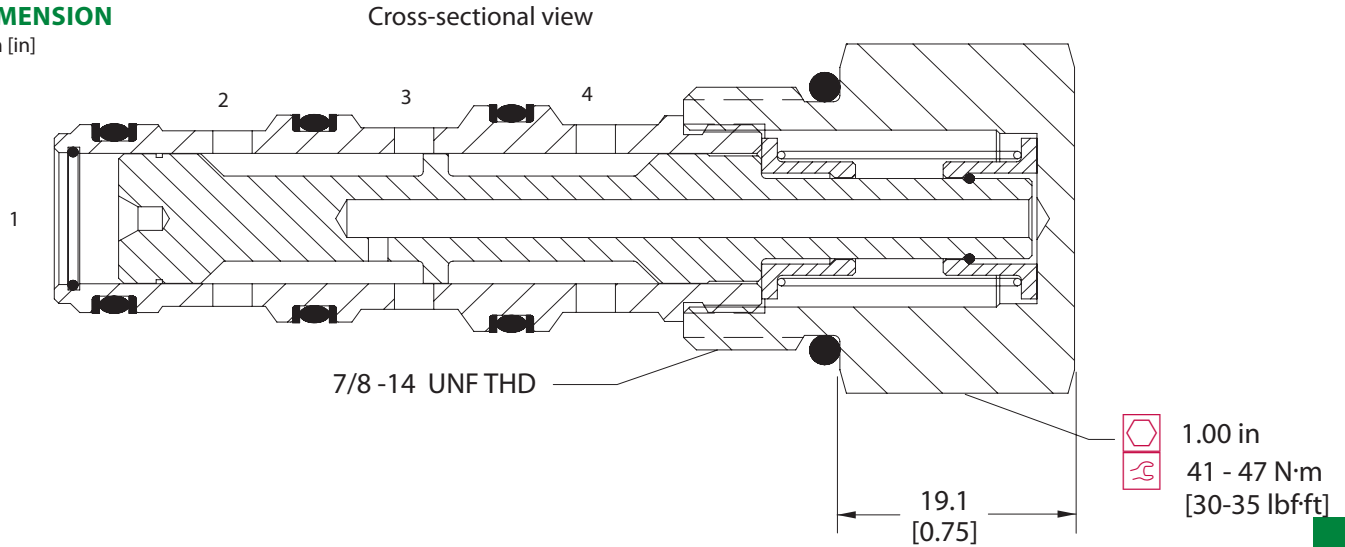
**PERFORMANCE CURVE**

Theoretical performance  
 Pressure Drop

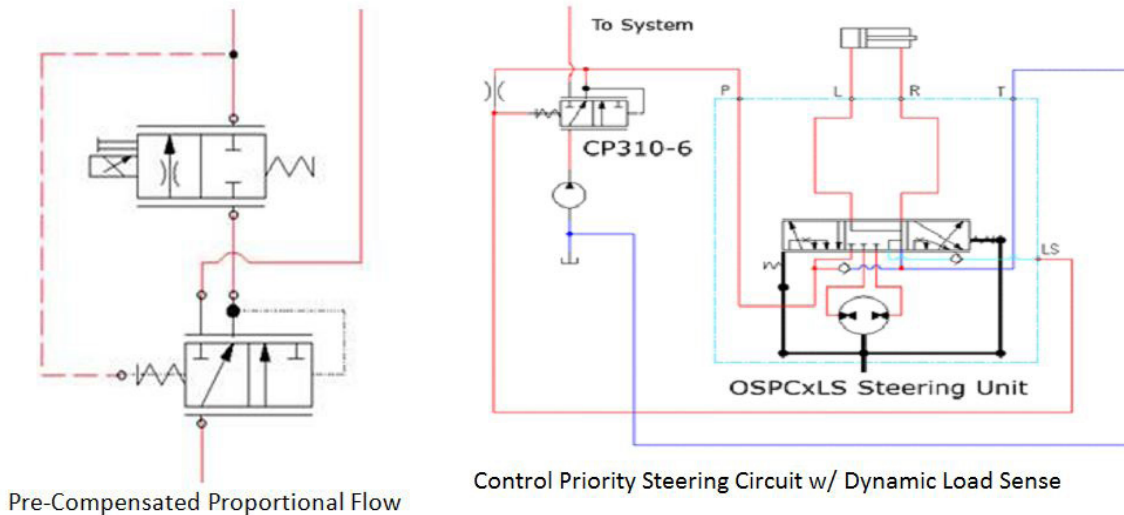
33 cSt [154 SUS] hyd.oil @ 38°C [100° F]



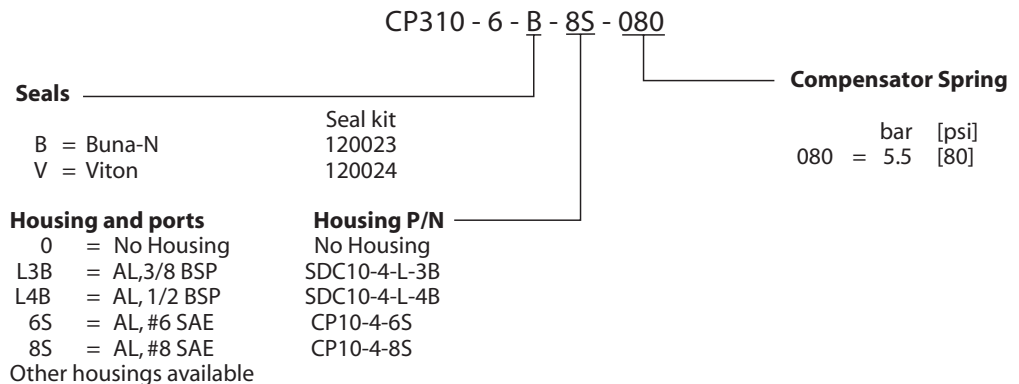
**DIMENSION**  
 mm [in]



**EXAMPLE CIRCUITS**



**ORDERING INFORMATION**



LE - Logic Elements  
 CP310-6