

OPERATION

The CP313-6 is a 20-size, load sense, priority, static, pressure compensator. The valve will provide on-demand priority flow to port 2 in the required amount (dependent on the load sense pressure on port 1), allowing the excess flow to go to auxiliary functions through port 3.

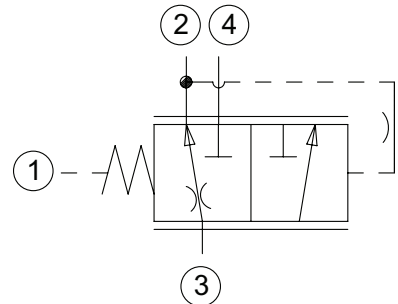
APPLICATION

Common applications include steering circuits that require pre-compensated, priority flow to go to the steering system, and the excess flow will go to an auxiliary function, like a fan motor. To obtain dynamic load sensing (priority type pre-comp) add in orifice between ports 2 and 1 in the manifold. This provides faster response and is commonly used in steering to flush out LS line. See Circuit Example.

SPECIFICATION

Rated pressure	210 bar [3000 psi]
Rated flow at 7 bar [100 psi]	200 l/min [53 US gal/min]
Weight	1.33 kg [2.93 lb]
Cavity	SDC20-4

SCHEMATIC

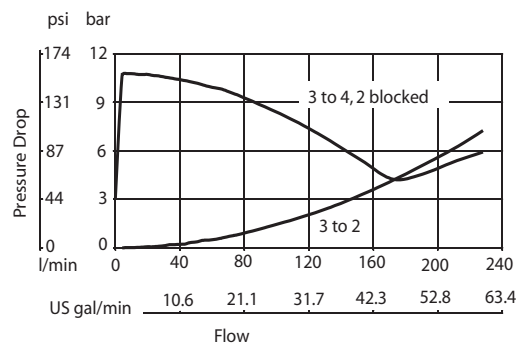


PERFORMANCE CURVE

Theoretical performance

Pressure Drop

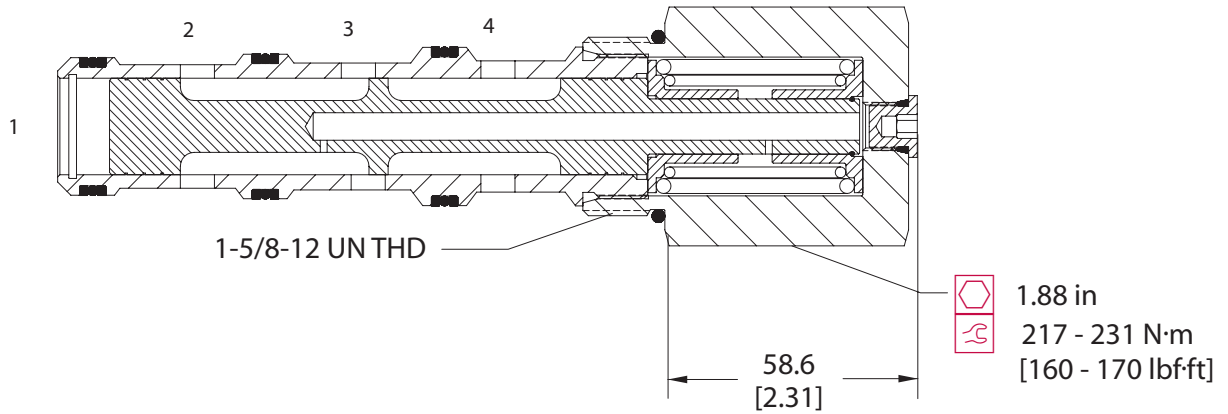
33 cSt [154 SUS] hyd.oil @ 38° C [100° F]



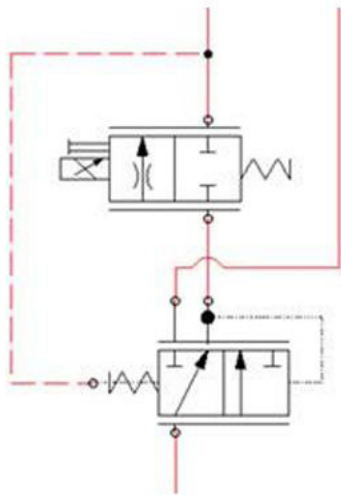
DIMENSION

mm [in]

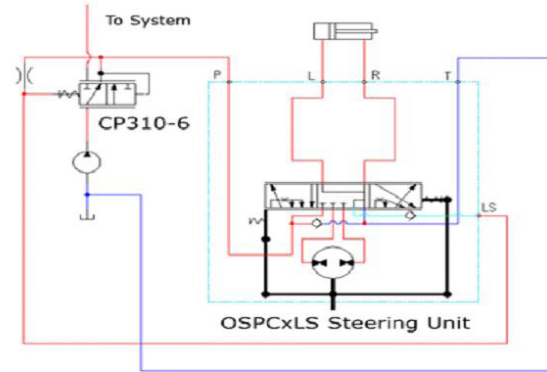
Cross-sectional view



EXAMPLE CIRCUITS



Pre-Compensated Proportional Flow



Control Priority Steering Circuit w/ Dynamic Load Sense

ORDERING INFORMATION

CP313 - 6 - B - 16S - 080

Seals

B = Buna-N
 V = Viton

Seal kit
 120181
 120182

Housing and ports

0 = No Housing
 8B = AL, 1 BSP
 10B = AL, 1-1/4 BSP
 16S = AL, #16 SAE
 20S = AL, #20 SAE
 Other housings available

Housing P/N

No Housing
 CP20-4-8B
 CP20-4-10B
 CP20-4-16S
 CP20-4-20S

Compensator Spring

bar	[psi]
050	3.4 [50]
080	5.5 [80]
100	6.9 [100]
130	9.0 [130]
150	10.3 [150]