

OPERATION

The PC12-PS is a 12-size, load sense, priority, static, pressure compensator. The valve will provide on-demand priority flow to port 2 in the required amount (dependent on the load sense pressure on port 1), allowing the excess flow to go to auxiliary functions through port 3.

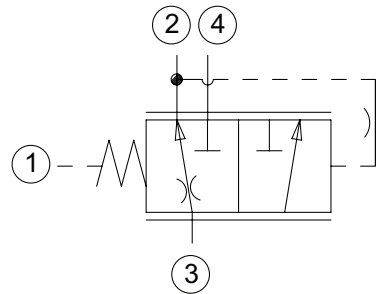
APPLICATION

Common applications include steering circuits that require pre-compensated, priority flow to go to the steering system, and the excess flow will go to an auxiliary function, like a fan motor. To obtain dynamic load sensing (priority type pre-comp) add in orifice between ports 2 and 1 in the manifold. This provides faster response and is commonly used in steering to flush out LS line. See Circuit Example.

SPECIFICATION

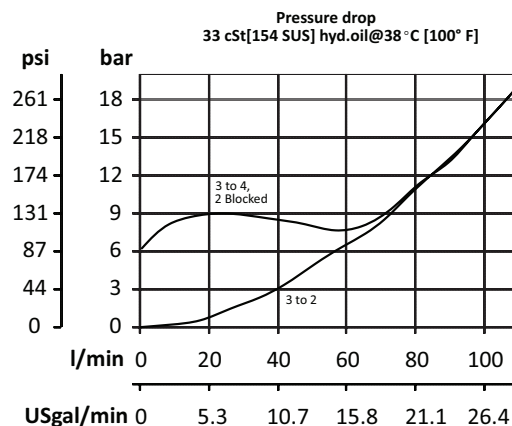
Rated pressure	210 bar [3045 psi]
Rated flow at 7 bar	75 l/min
[100 psi]	[20 US gal/min]
Weight	0.31 kg [0.68 lb]
Cavity	CP12-4

SCHEMATIC



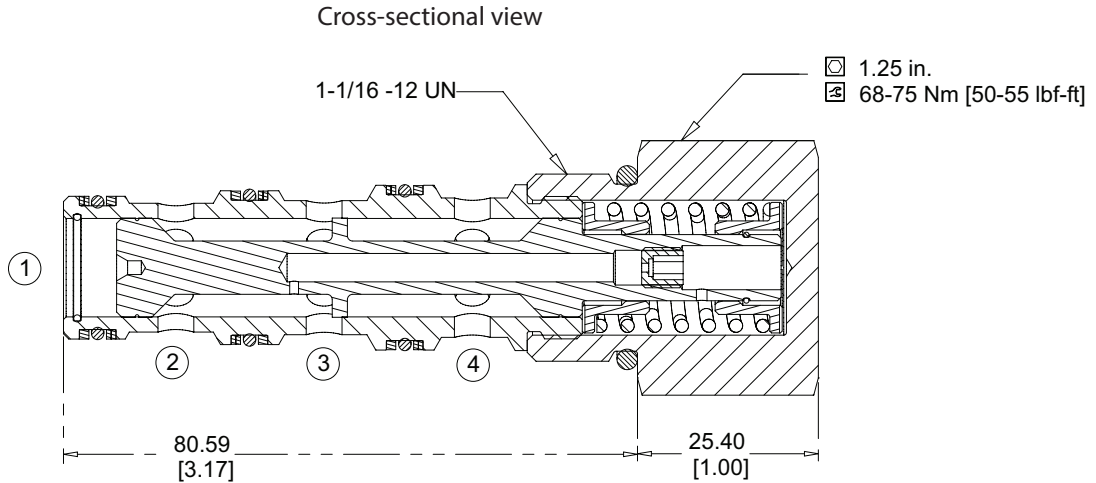
PERFORMANCE CURVE

Theoretical performance

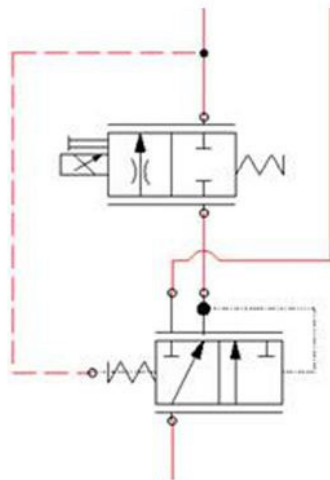


DIMENSION

mm [in]



EXAMPLE CIRCUITS



Pre-Compensated Proportional Flow

ORDERING INFORMATION

PC12-LPS-5.5-B-00

Differential Control Pressure
 5.5 = 5.5 bar [80 psi]
 7.0 = 7 bar [100 psi]
 10.0 = 10.0 bar [150 psi]

Housing and ports	Housing Part #
00 = No Housing	No Housing
3B = Al, 1/2 BSP	CP12-4-3B
4B = Al, 3/4 BSP	CP12-4-4B
10S = Al, #10 SAE	CP12-4-10S
12S = Al, #12 SAE	CP12-4-12S

Seals	Seal Kit
B = Buna-N	120262
V = Viton	120263