

**OPERATION**

The CP312-6 is a 16-size, load sense, priority, static, pressure compensator. The valve will provide on-demand priority flow to port 2 in the required amount (dependent on the load sense pressure on port 1), allowing the excess flow to go to auxiliary functions through port 3.

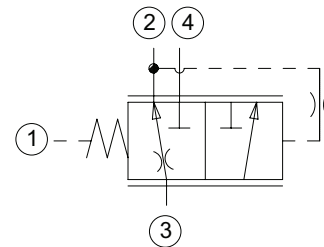
**APPLICATION**

Common applications include steering circuits that require pre-compensated, priority flow to go to the steering system, and the excess flow will go to an auxiliary function, like a fan motor. To obtain dynamic load sensing (priority type pre-comp) add in orifice between ports 2 and 1 in the manifold. This provides faster response and is commonly used in steering to flush out LS line. See Circuit Example.

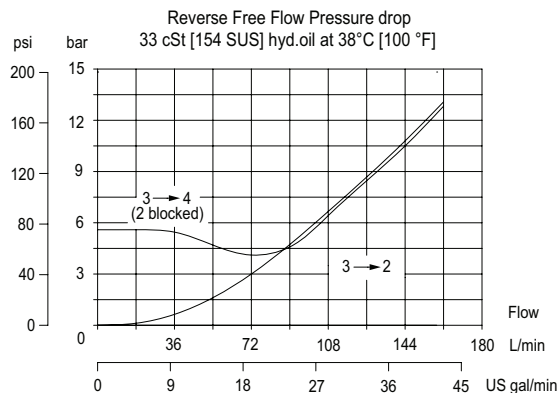
**SPECIFICATION**

Rated pressure	210 bar [3045 psi]
Rated flow at 7 bar [100 psi]	114 l/min [30 US gal/min]
Weight	0.63 kg [1.39 lb]
Cavity	CP16-4

**SCHEMATIC**



**PERFORMANCE CURVE**

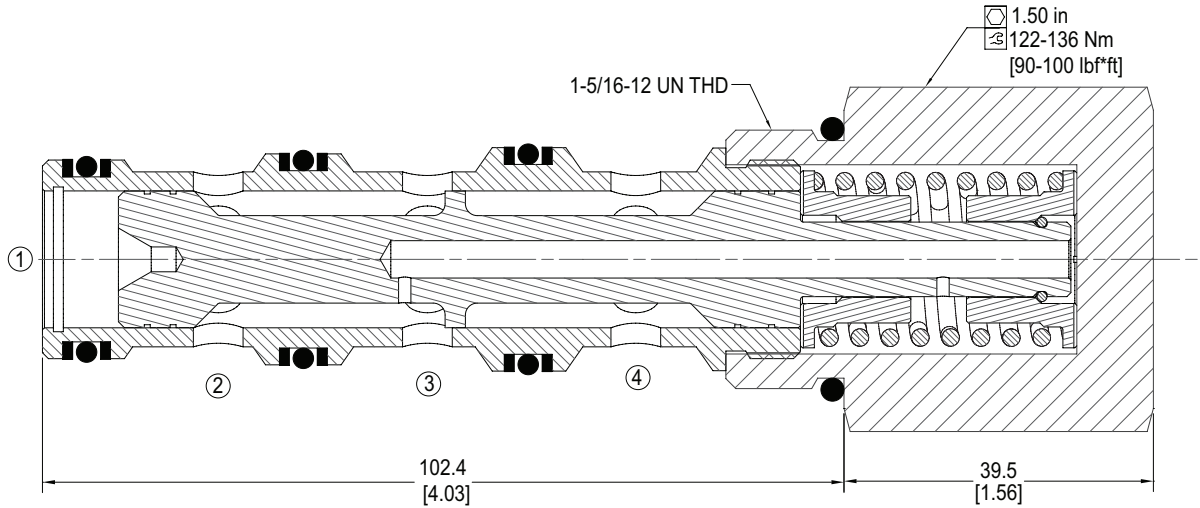


LE - Logic Elements  
 PC16-LPS

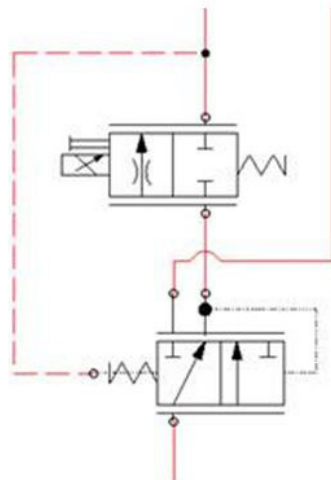
**DIMENSION**

mm [in]

Cross-sectional view



**EXAMPLE CIRCUITS**



Pre-Compensated Proportional Flow

**ORDERING INFORMATION**

**PC16-LPS - XX - X - 00**

Pressure Compensator, 16 size  
 Load Sense, Priority, Static

Compensator Spring

Code	Shift Pressure
5.5	5.5 Bar (80 psi)
10	10 Bar (150 psi)

Seal Option

Code	Seal Material	Seal kit
B	Buna-N	120025
V	Viton	120026

Housings & Ports	Housing P/N
00: Cartridge Only	No Body
6B: 3/4 BSP, AL	CP16-4-6B
8B: 1 BSP, AL	CP16-4-8B
12S: #12 SAE, AL	CP16-4-12S
16S: #16 SAE, AL	CP16-4-16S

Other housings available

LE - Logic Elements  
 CP312-6