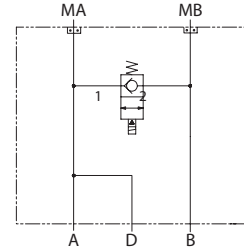


OPERATION

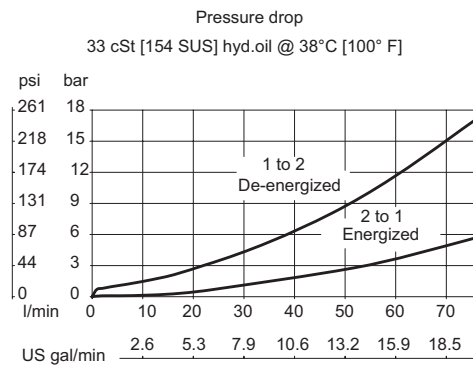
This is a bypass solenoid HIC with drain that mounts to DH motors with manifold mount porting. When energized, the valve connects ports A and B. Drain connects to port A.

Schematic



SPECIFICATIONS

Theoretical performance



Specifications

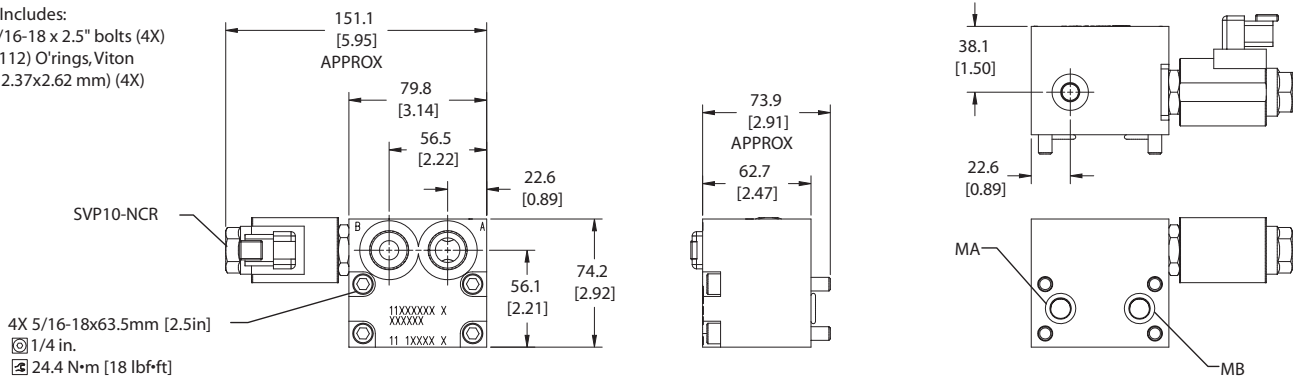
Rated pressure	210 bar [3045 psi]
Rated flow at 7 bar [102 psi]	80 l/min [21 US gal/min]
Leakage	6 drops/min @ rated pressure
Weight	1.36 kg [3.00 lb]
Cartridge	SVP10-NCR
Shuttle/drain port	#4 SAE (1/4 BSP)
Service mount kit	11023864
Motor	DH

DIMENSIONS

Cross-sectional view

mm [in]

HIC Includes:
 - 5/16-18 x 2.5" bolts (4X)
 - (-112) O'rings, Viton (12.37x2.62 mm) (4X)



ORDERING INFORMATION

MM-DH-00-BSVP10-NCR-12D-DE-B-N-10S

