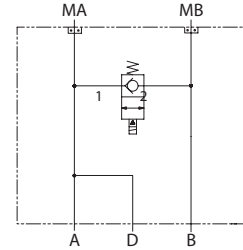


OPERATION

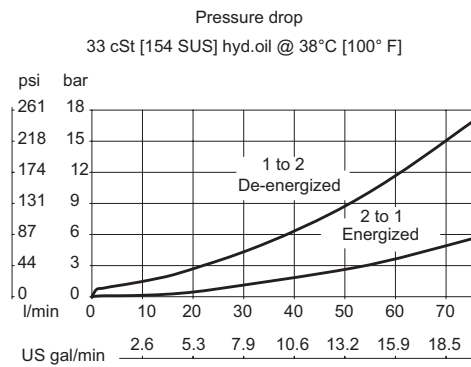
This is a bypass solenoid HIC with drain that mounts to DH motors with manifold mount porting. When energized, the valve connects ports A and B. Drain connects to port A.

Schematic



SPECIFICATIONS

Theoretical performance



Specifications

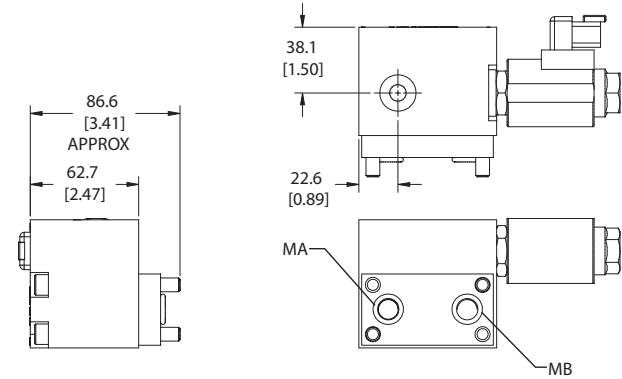
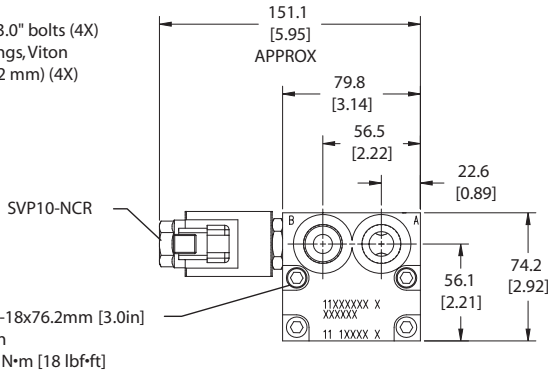
Rated pressure	210 bar [3045 psi]
Rated flow at 7 bar [102 psi]	80 l/min [21 US gal/min]
Leakage	6 drops/min @ rated pressure
Weight	1.47 kg [3.24 lb]
Cartridge	SVP10-NCR
Shuttle/drain port	#4 SAE (1/4 BSP)
Service mount kit	11023865
Motor	DS

DIMENSIONS

Cross-sectional view

mm [in]

HIC Includes:
 - 5/16-18 x 3.0" bolts (4X)
 - (-112) O'rings, Viton (12.37x2.62 mm) (4X)



ORDERING INFORMATION

MM-DS-00-BSVP10-NCR-12D-DE-B-N-10S

Motor mount	Housing and ports	Part #
Motor code	10S = Al, #10SAE	11026356
Secondary valve	4B = Al, 1/2 BSP	11026357
00 = No valve	Filter 300 μM	
Solenoid valve	N = No filter (standard)	
	F = with filter	
Coil voltage	Seals	
00 = No coil	B = Buna-N	
12D = 12 VDC (Standard Coil)	V = Viton	
24D = 24 VDC (Standard Coil)		
R12D = 12 VDC (R-Coil)		
R24D = 24 VDC (R-Coil)		
Coil termination		
00 = No connector	AJ = Amp Junior*	
FL = Flying Lead	SP = Spade*	
DN = Din 43650*	AS = Amp SuperSeal 1.5 and	
DE = Deutsch	Metri-Pack 150 Series Type 1	
	M3 = Metri-Pack 150 Series Type 2	

* These terminations not available on robust coil (R12D, R24D)