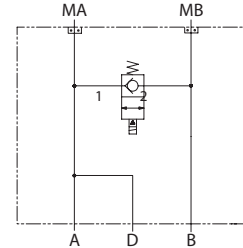


OPERATION

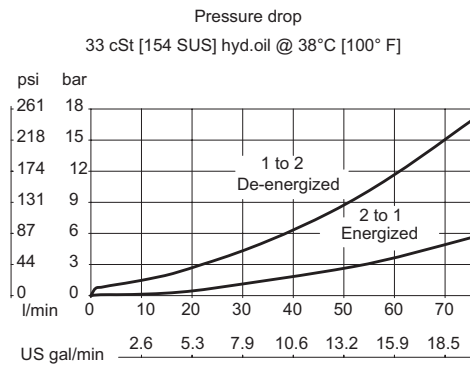
This is a bypass solenoid HIC with drain that mounts to DH motors with manifold mount porting. When energized, the valve connects ports A and B. Drain connects to port A.

Schematic



SPECIFICATIONS

Theoretical performance



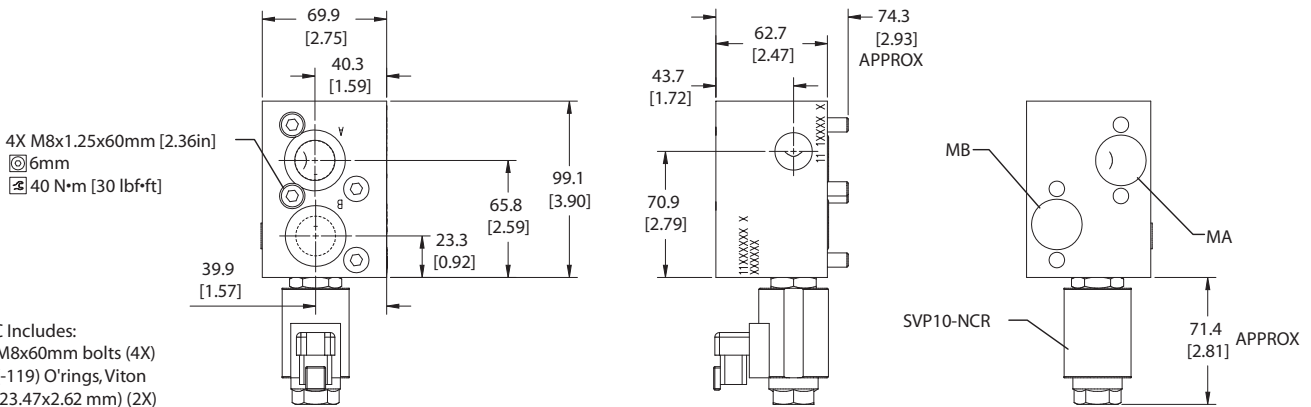
Specifications

Rated pressure	210 bar [3045 psi]
Rated flow at 7 bar [102 psi]	80 l/min [21 US gal/min]
Leakage	6 drops/min @ rated pressure
Weight	1.51 kg [3.33 lb]
Cartridge	SVP10-NCR
Shuttle/drain port	#4 SAE (1/4 BSP)
Service mount kit	11023869
Motor	OMH

DIMENSIONS

Cross-sectional view

mm [in]



ORDERING INFORMATION

MM-OMH-00-BSVP10-NCR-12D-DE-B-N-10S

Motor mount	Motor code	Secondary valve	Solenoid valve	Coil voltage	Coil termination	Housing and ports	Filter	Seals	Part #
		00 = No valve		00 = No coil	00 = No connector	10S = Al, #10SAE	N = No filter (standard)	B = Buna-N	11026358
				12D = 12 VDC (Standard Coil)	FL = Flying Lead	4B = Al, 1/2 BSP	F = with filter	V = Viton	11026359
				24D = 24 VDC (Standard Coil)	DN = Din 43650*				
				R12D = 12 VDC (R-Coil)	DE = Deutsch				
				R24D = 24 VDC (R-Coil)	AJ = Amp Junior*				
					SP = Spade*				
					AS = Amp SuperSeal 1.5 and				
					Metri-Pack 150 Series Type 1				
					M3 = Metri-Pack 150 Series Type 2				

*These terminations not available on robust coil (R12D,R24D)

MM - Motor Mount HICs Catalog
 MM-OMH-00-SVP10-NCR