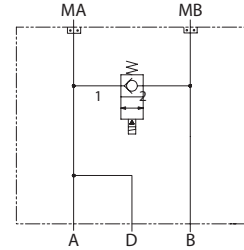


**OPERATION**

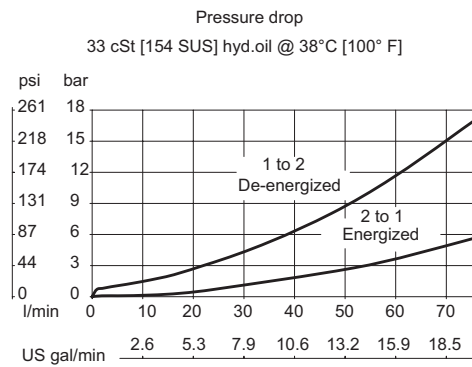
This is a bypass solenoid HIC with drain that mounts to DH motors with manifold mount porting. When energized, the valve connects ports A and B. Drain connects to port A.

**Schematic**



**SPECIFICATIONS**

**Theoretical performance**



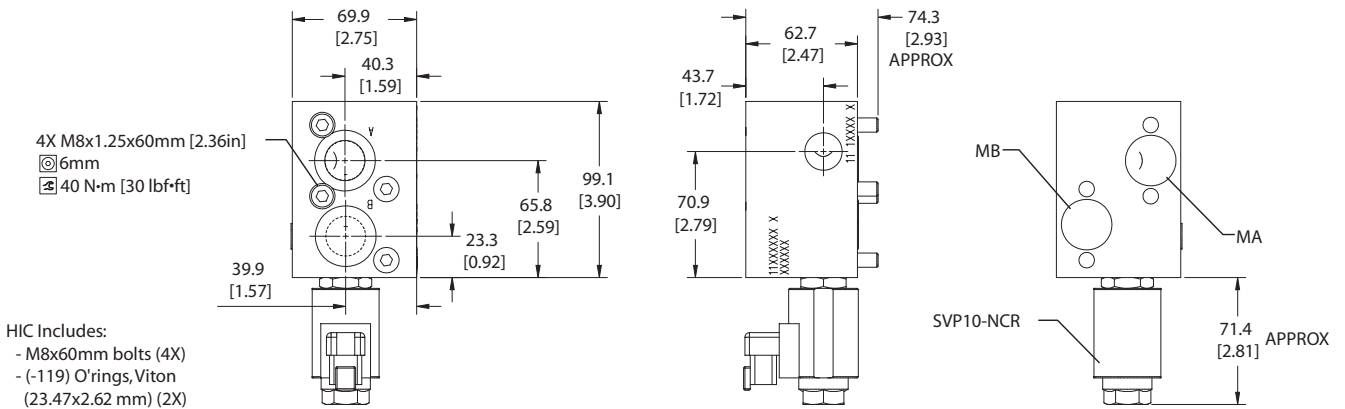
**Specifications**

Rated pressure	210 bar [3045 psi]
Rated flow at 7 bar [102 psi]	80 l/min [21 US gal/min]
Leakage	6 drops/min @ rated pressure
Weight	1.51 kg [3.33 lb]
Cartridge	SVP10-NCR
Shuttle/drain port	#4 SAE (1/4 BSP)
Service mount kit	11023869
Motor	OMP/OMR

**DIMENSIONS**

**Cross-sectional view**

mm [in]



**ORDERING INFORMATION**

**MM-OMP/OMR-00-BSVP10-NCR-12D-DE-B-N-10S**

