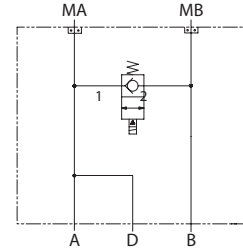


OPERATION

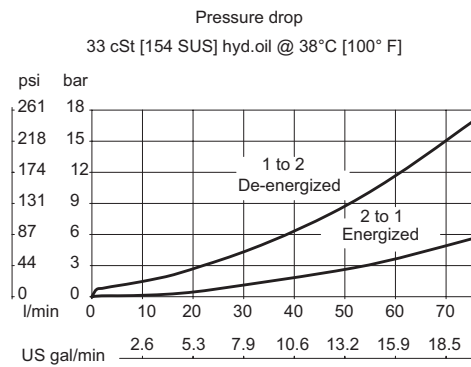
This is a bypass solenoid HIC with drain that mounts to DH motors with manifold mount porting. When energized, the valve connects ports A and B. Drain connects to port A.

Schematic



SPECIFICATIONS

Theoretical performance



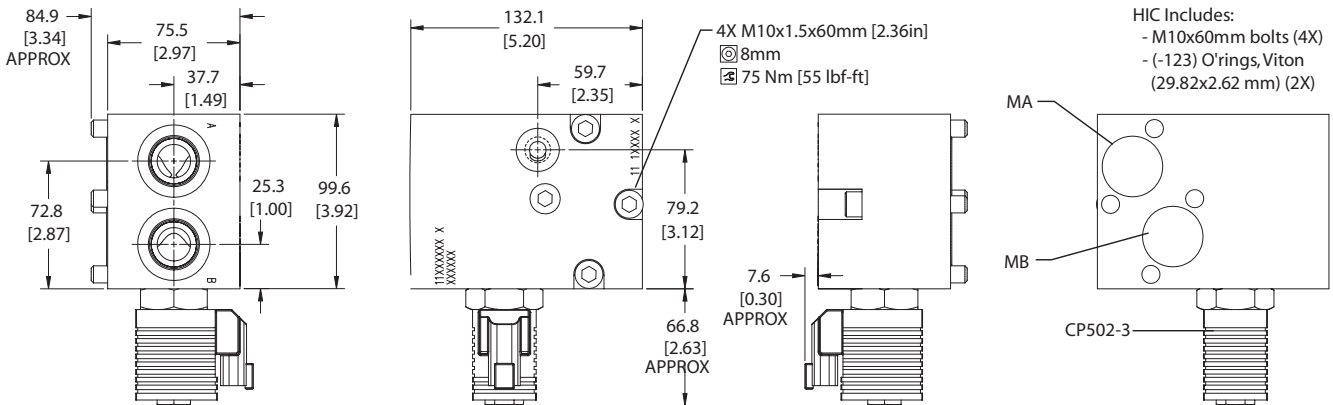
Specifications

Rated pressure	210 bar [3045 psi]
Rated flow at 7 bar [102 psi]	80 l/min [21 US gal/min]
Leakage	6 drops/min @ rated pressure
Weight	2.18 kg [4.81 lb]
Cartridge	CP502-3
Shuttle/drain port	#4 SAE (1/4 BSP)
Service mount kit	11023871
Motor	OMS

DIMENSIONS

Cross-sectional view

mm [in]



ORDERING INFORMATION

MM-OMT-00-BCP502-3-B-12S-12D-DE

Motor mount	Motor code	Secondary valve	Solenoid valve	Seals	Cartridge seal kit	Coil termination	Coil voltage	Housing and ports	Part #
		00 = No valve		B = Buna-N V = Viton	120019 120020	0 = No connector S = Spade L = Lead	000 = No coil 12D = 12 VDC 24D = 24 VDC	12S = Al, #12 SAE 6B = Al, 3/4 BSP	H = Din 43650 DE = Deutsch M2 = Metri-Pack 150 Type 1 11019333 11019334

MM - Motor Mount HICs Catalog
 MM-OMT-00-CP502-3