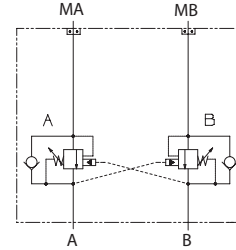


OPERATION

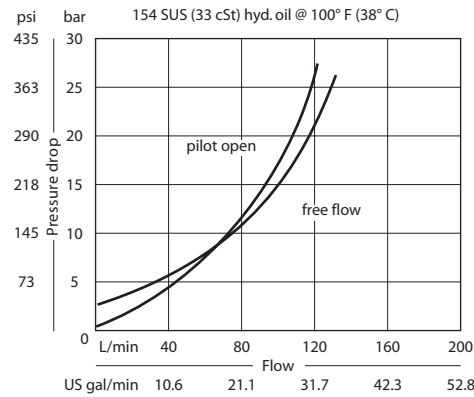
This is a dual-counterbalance HIC that mounts to OMH motors with BSP porting.

Schematic



SPECIFICATIONS

Theoretical performance

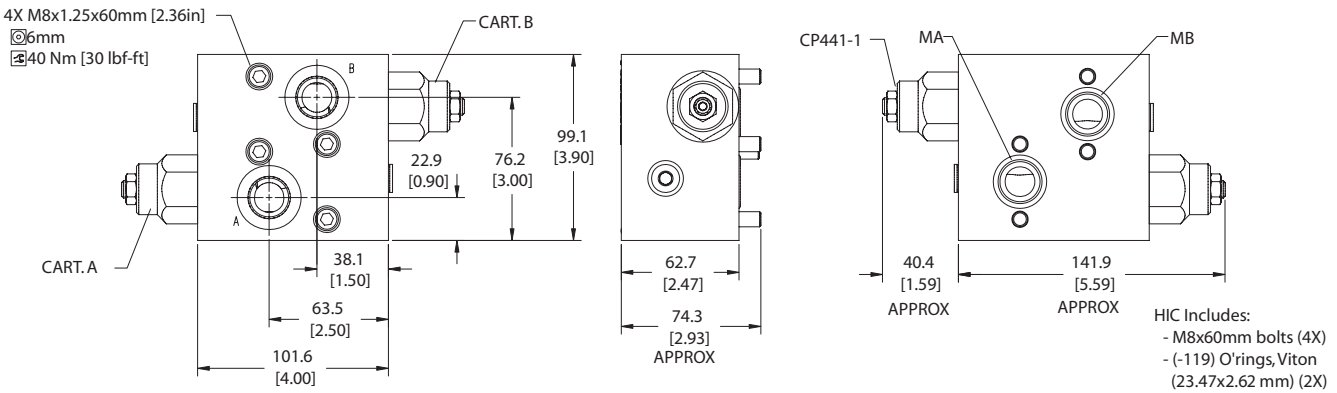


Specifications

Rated pressure	210 bar [3045 psi]
Rated flow at 22 bar [319 psi]	115 l/min [30 US gal/min]
Leakage	10 drops/min @ 70% of crack pressure
Weight	1.93 kg [4.25 lb]
Pilot ratio	3.0:1, 4.5:1, 10.0:1
Cartridge	CP441-1
Service mount kit	11023869
Motor	OMH

DIMENSIONS

Cross-sectional view



ORDERING INFORMATION

