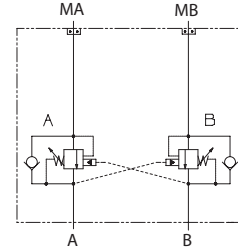


**OPERATION**

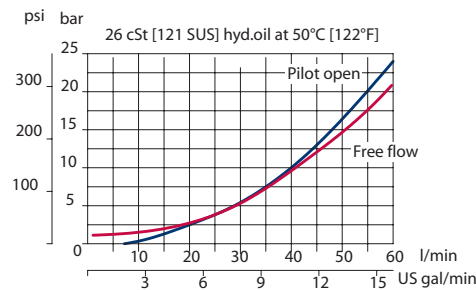
This is a dual-counterbalance HIC that mounts to OMP/OMR motors with BSP porting.

**Schematic**



**SPECIFICATIONS**

**Theoretical performance**



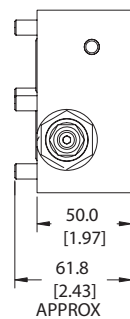
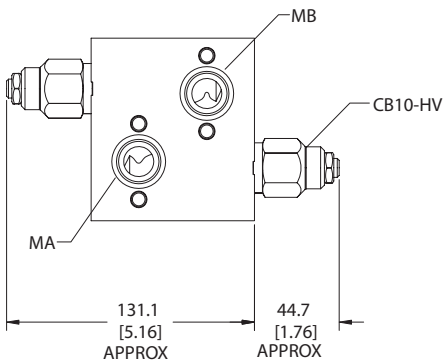
**Specifications**

Rated pressure	210 bar [3045 psi]
Rated flow at 22 bar [319 psi]	60 l/min [16 US gal/min]
Leakage	6 drops/min @ 70% of crack pressure
Weight	1.43 kg [3.15 lb]
Pilot ratio	3.0:1, 4.5:1, 10.0:1
Cartridge	CB10 HV
Service mount kit	11023162
Motor	OMP/OMR

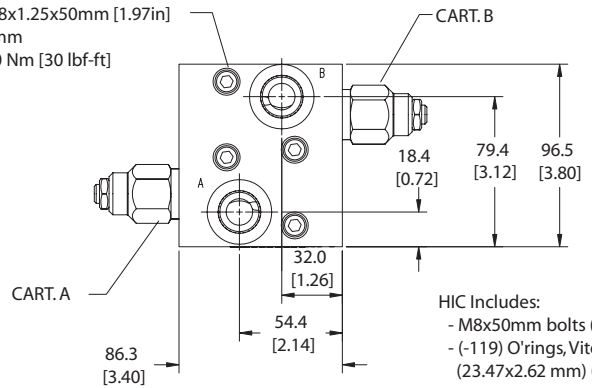
**DIMENSIONS**

**Cross-sectional view**

mm [in]



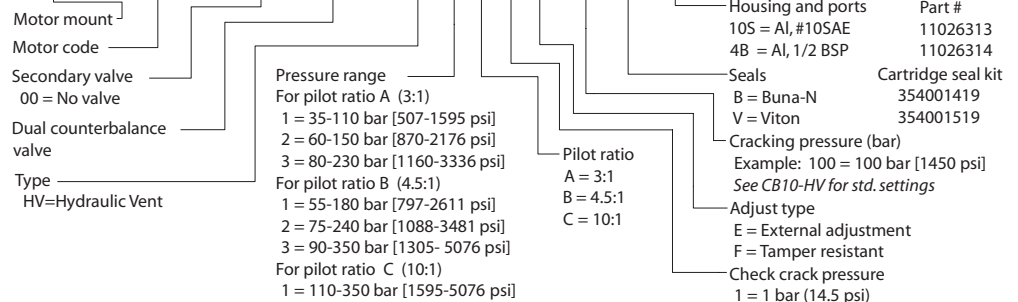
4X M8x1.25x50mm [1.97in]  
 6mm  
 40 Nm [30 lbf-ft]



HIC Includes:  
 - M8x50mm bolts (4X)  
 - (-119) O'rings, Viton (23.47x2.62 mm) (2X)

**ORDERING INFORMATION**

**MM-OMP/OMR-00-DCB10-HV-1-C-1-E-100-B-10S**



MM - Motor Mount HICs Catalog  
 MM-OMP/OMR-00-DCB10-HV