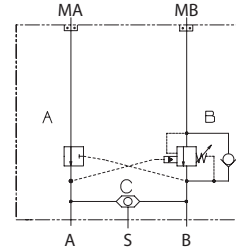


OPERATION

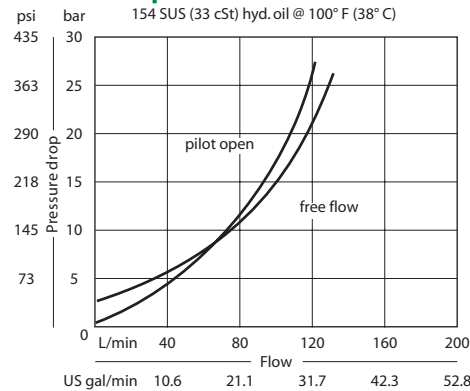
This is a single counterbalance (B port) HIC with shuttle that mounts to OMS motors with BSP porting.

Schematic



SPECIFICATIONS

Theoretical performance



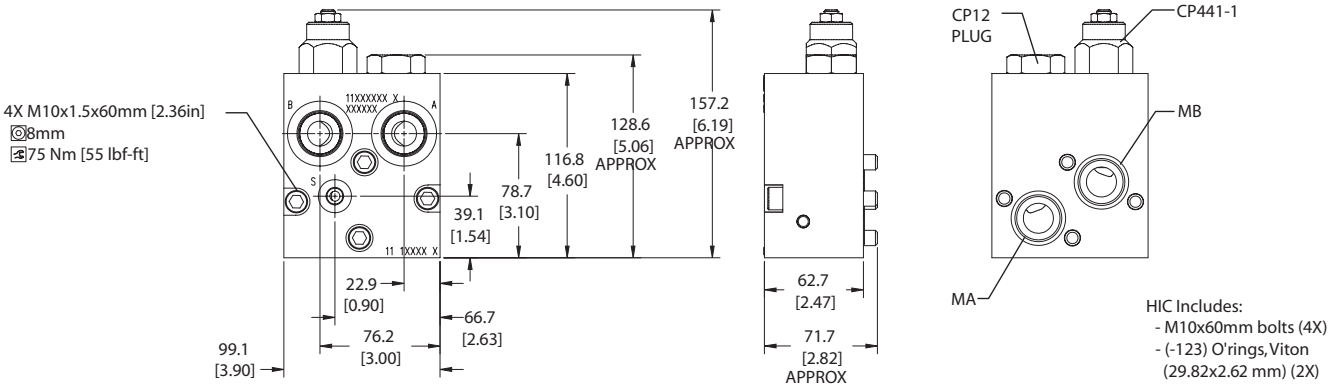
Specifications

Rated pressure	210 bar [3045 psi]
Rated flow at 22 bar [319 psi]	115 l/min [30 US gal/min]
Leakage	10 drops/min @ 70% of crack pressure
Weight	2.19 kg [4.83 lb]
Pilot ratio	3.0:1, 4.5:1, 10.0:1
Cartridge	CP441-1
Shuttle	CP124-1
Plug	CP12-V-3S-B1
Shuttle/drain port	#4 SAE (1/4 BSP)
Service mount kit	11023871
Motor	OMT

DIMENSIONS

Cross-sectional view

mm [in]



ORDERING INFORMATION

