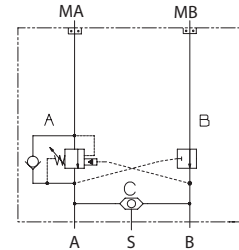


**OPERATION**

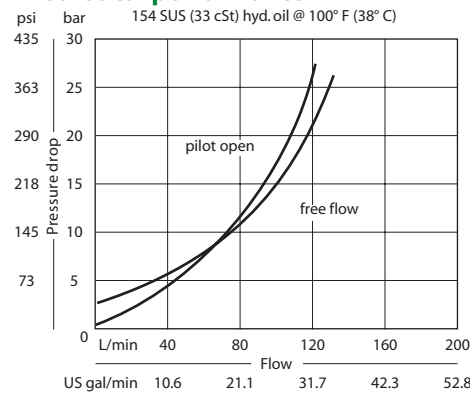
This is a single counterbalance (A port) HIC with shuttle that mounts to OMS motors with BSP porting.

**Schematic**



**SPECIFICATIONS**

**Theoretical performance**



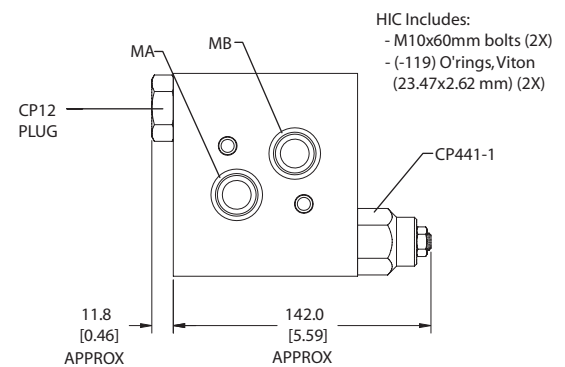
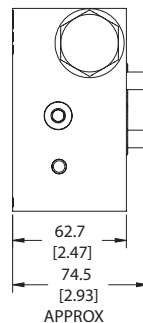
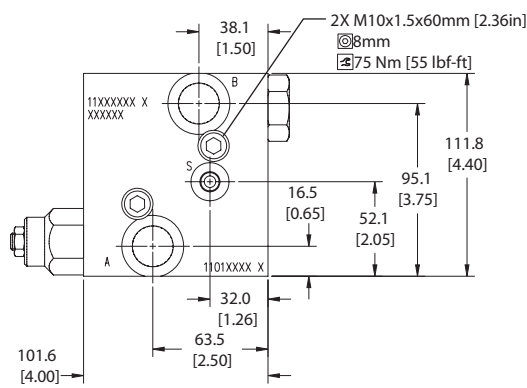
**Specifications**

Rated pressure	210 bar [3045 psi]
Rated flow at 22 bar [319 psi]	115 l/min [30 US gal/min]
Leakage	10 drops/min @ 70% of crack pressure
Weight	2.13 kg [4.70 lb]
Pilot ratio	3.0:1, 4.5:1, 10.0:1
Cartridge	CP441-1
Shuttle	CP124-1
Plug	CP12-V-3S-B1
Shuttle/drain port	#4 SAE (1/4 BSP)
Service mount kit	11023867
Motor	OMS

**DIMENSIONS**

**Cross-sectional view**

mm [in]



HIC Includes:  
 - M10x60mm bolts (2X)  
 - (-119) O'rings, Viton (23.47x2.62 mm) (2X)

**ORDERING INFORMATION**

**MM-OMS-LS-ACP441-1-B-10S-E-A-250-10.0-015**

