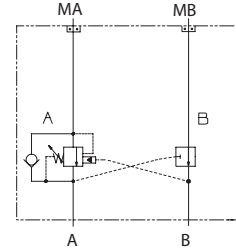


OPERATION

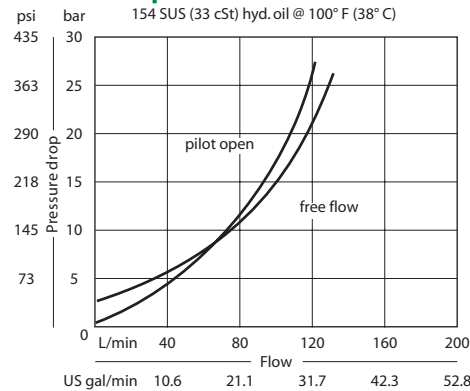
This is a single-counterbalance HIC (A port) that mounts to OMT motors with BSP porting.

Schematic



SPECIFICATIONS

Theoretical performance



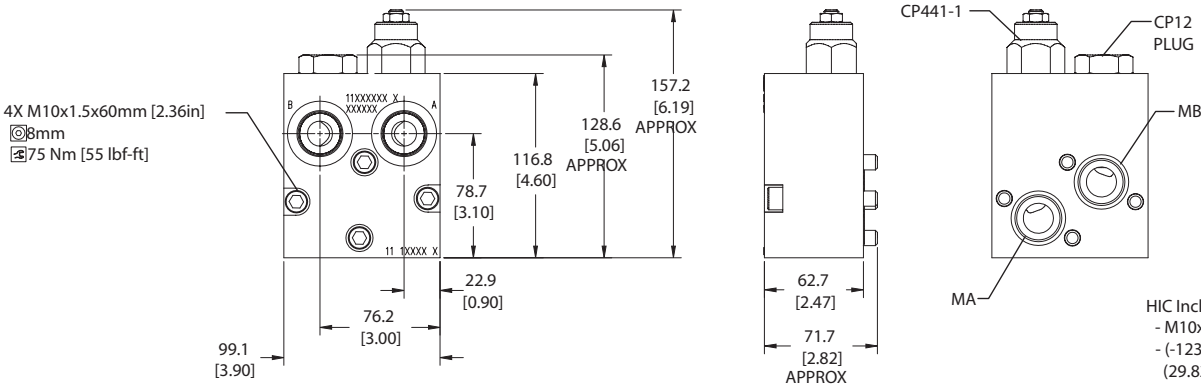
Specifications

| | |
|--------------------------------|--------------------------------------|
| Rated pressure | 210 bar [3045 psi] |
| Rated flow at 22 bar [319 psi] | 115 l/min [30 US gal/min] |
| Leakage | 10 drops/min @ 70% of crack pressure |
| Weight | 2.20 kg [4.85 lb] |
| Pilot ratio | 3.0:1, 4.5:1, 10.0:1 |
| Cartridge | CP441-1 |
| Plug | CP12-V-3S-B1 |
| Service mount kit | 11023871 |
| Motor | OMT |

DIMENSIONS

Cross-sectional view

mm [in]



HIC Includes:
 - M10x60mm bolts (4X)
 - (-123) O'rings, Viton (29.82x2.62 mm) (2X)

ORDERING INFORMATION

MM-OMT-00-ACP441-1-B-12S-E-A-250-10.0-015

