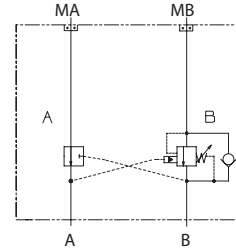


OPERATION

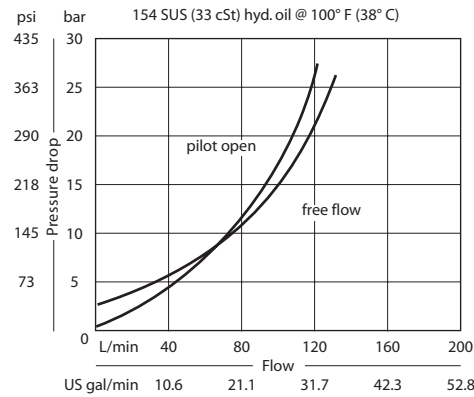
This is a single counterbalance HIC (on B port) that mounts to OMT motors with BSP porting.

Schematic



SPECIFICATIONS

Theoretical performance



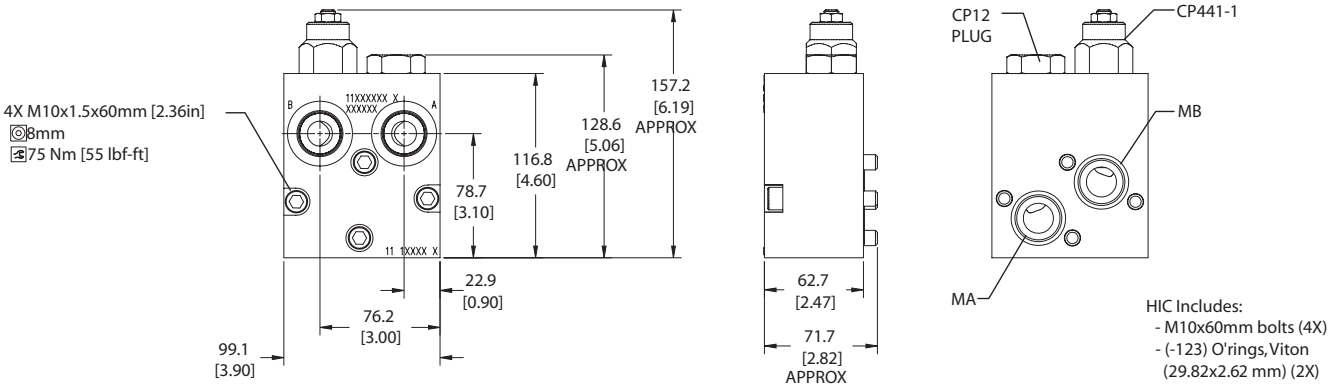
Specifications

Rated pressure	210 bar [3045 psi]
Rated flow at 22 bar [319 psi]	115 l/min [30 US gal/min]
Leakage	10 drops/min @ 70% of crack pressure
Weight	2.20 kg [4.85 lb]
Pilot ratio	3.0:1, 4.5:1, 10.0:1
Cartridge	CP441-1
Plug	CP12-V-3S-B1
Service mount kit	11023871
Motor	OMT

DIMENSIONS

Cross-sectional view

mm [in]



ORDERING INFORMATION

MM-OMT-00-BCP441-1-B-12S-E-A-250-10.0-015

