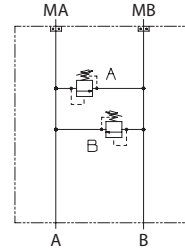


**OPERATION**

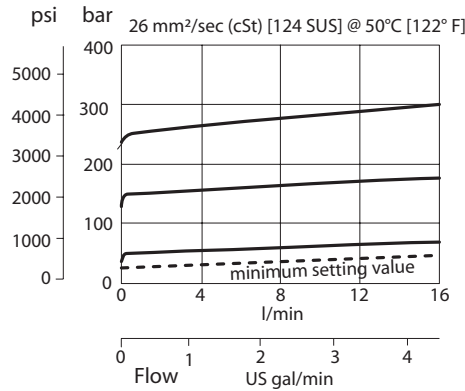
This is a dual cross-port relief HIC that mounts to DS motors with manifold mount porting.

**Schematic**



**SPECIFICATIONS**

**Theoretical performance**



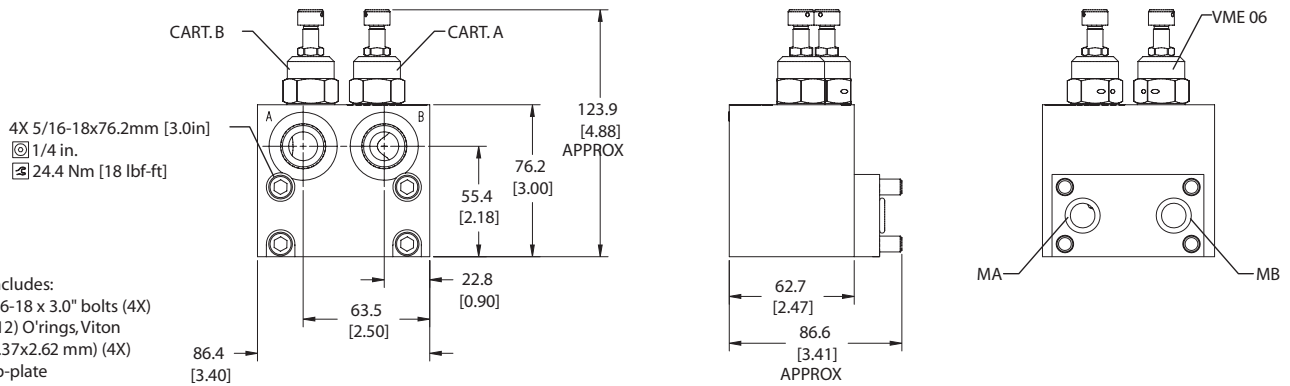
**Specifications**

Rated pressure	210 bar [3045 psi]
Rated flow at 7 bar [102 psi]	40 l/min [11 US gal/min]
Weight	1.39 kg [3.06 lb]
Cartridge	VME 06
Service mount kit	11023865
Motor	DS

**DIMENSIONS**

**Cross-sectional view**

mm [in]



- HIC Includes:
- 5/16-18 x 3.0" bolts (4X)
  - (-112) O'rings, Viton (12.37x2.62 mm) (4X)
  - Sub-plate

**ORDERING INFORMATION**

**MM-DS-00-DVME06-EN-2-10S-B-100**

