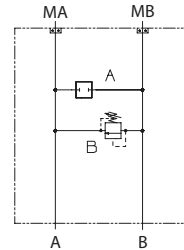


**OPERATION**

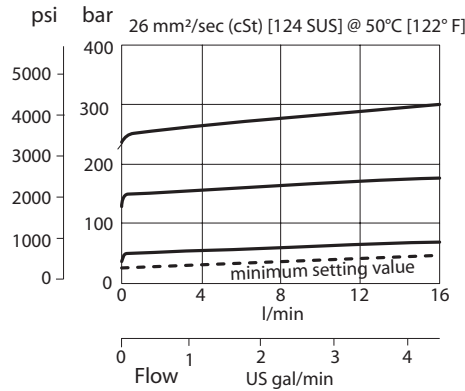
This is a single cross-port relief (B to A) HIC that mounts to DH motors with manifold mount porting.

**Schematic**



**SPECIFICATIONS**

**Theoretical performance**



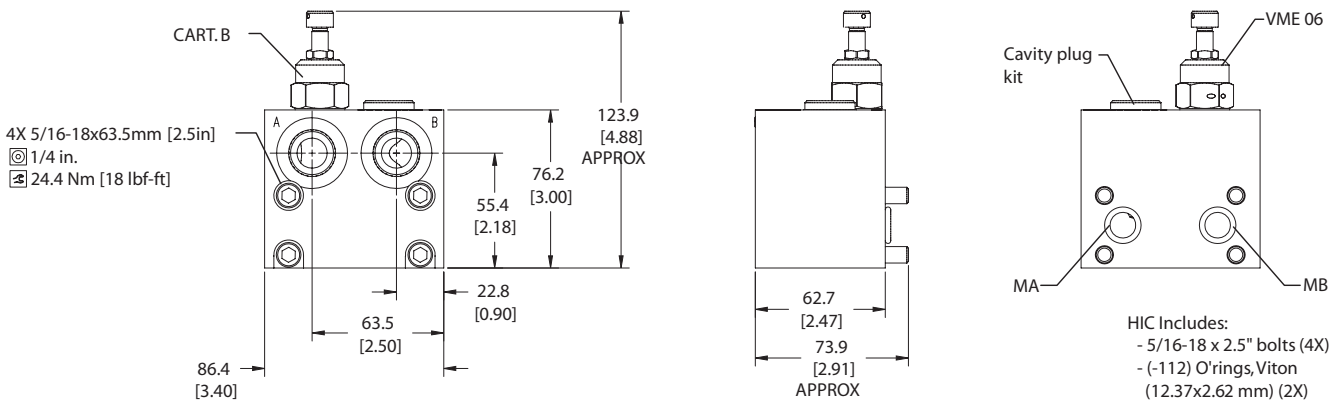
**Specifications**

Rated pressure	210 bar [3045 psi]
Rated flow at 7 bar [102 psi]	40 l/min [11 US gal/min]
Weight	1.28 kg [2.82 lb]
Cartridge	VME 06
Plug	11026074
Service mount kit	11023864
Motor	DH

**DIMENSIONS**

**Cross-sectional view**

mm [in]



HIC Includes:  
 - 5/16-18 x 2.5" bolts (4X)  
 - (-112) O'rings, Viton (12.37x2.62 mm) (2X)

**ORDERING INFORMATION**

**MM-DH-00-BVME06-EN-2-10S-B-100**

