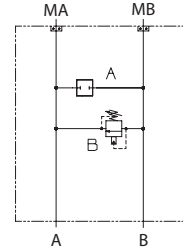


OPERATION

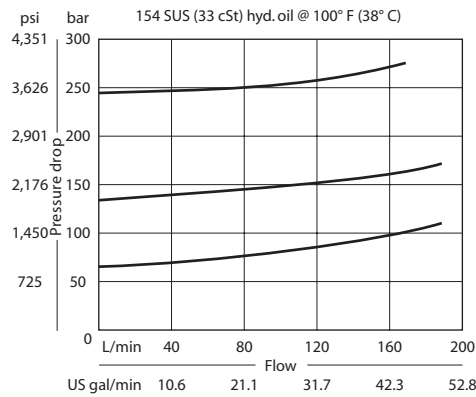
This is a single cross-port relief (B to A) HIC that mounts to OMH motors with BSP porting.

Schematic



SPECIFICATIONS

Theoretical performance



Specifications

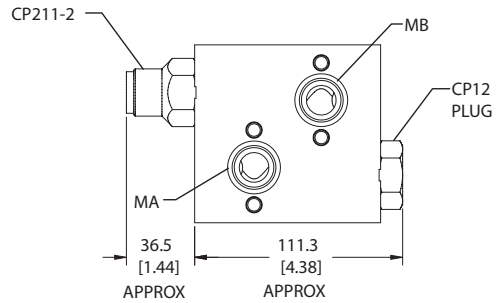
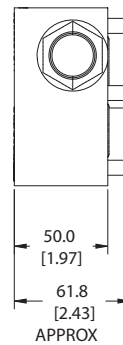
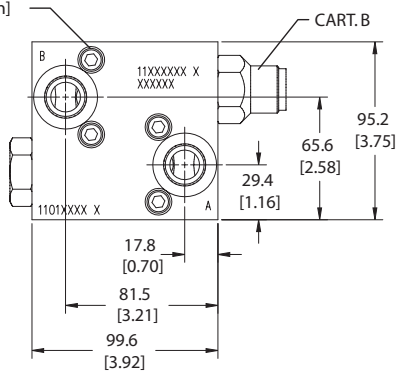
| | |
|-------------------------------|---|
| Rated pressure | 210 bar [3045 psi] |
| Rated flow at 7 bar [102 psi] | 190 l/min [50 US gal/min] |
| Leakage | 82 cm ³ /min [5 in ³ /min] @ 207 bar [3000 psi] |
| Weight | 1.42 kg [3.13 lb] |
| Cartridge | CP211-2 |
| Plug | CP12-V-2-B |
| Service mount kit | 11023162 |
| Motor | OMH |

DIMENSIONS

Cross-sectional view

mm [in]

- 4X M8x1.25x50mm [1.97in]
- 6mm
- 40 Nm [30 lbf-ft]



- HIC Includes:
- M8x50mm bolts (4X)
 - (-119) O'rings, Viton (23.47x2.62 mm) (2X)

ORDERING INFORMATION

MM-OMH-00-BCP211-2-B-10S-E-C-254

