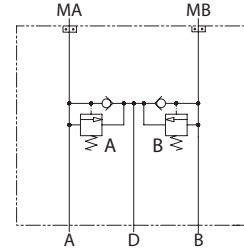


OPERATION

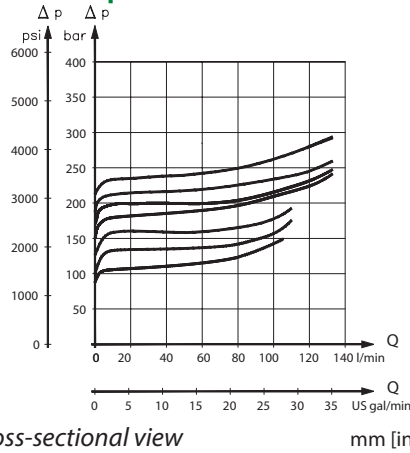
This is a dual shock valve with anticavitation checks that mounts to DS motors with manifold mount porting. The PVLP shock valve absorbs short-duration pressure spikes. Do not use it as a full-flow pressure relief valve. For anticavitation protection, connect drain port to reservoir with adequate piping.

Schematic



SPECIFICATIONS

Theoretical performance

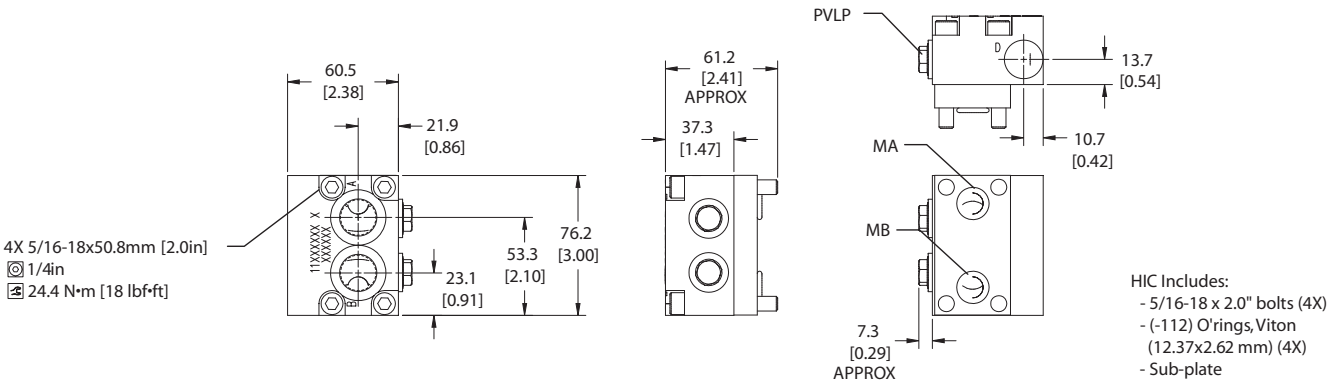


Specifications

Rated pressure	345 bar [5003 psi]
Rated flow at 7 bar [102 psi]	57 l/min [15 US gal/min]
Crack pressure	0.5 bar [7 psi]
Leakage	5 cm ³ /min [0.3 in ³ /min] @ 207 bar [3000 psi]
Weight	1.31 kg [2.89 lb]
Shuttle/drain port	#4 SAE (1/4 BSP)
Service mount kit	11023863
Motor	DS

DIMENSIONS

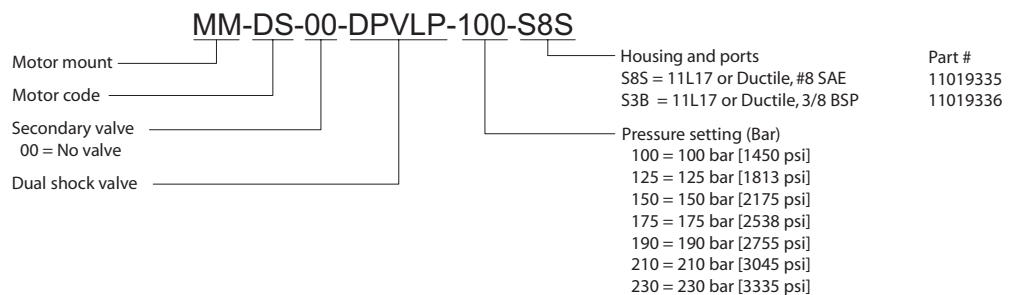
Cross-sectional view



- 4X 5/16-18x50.8mm [2.0in]
- ⊙ 1/4in
- ⊗ 24.4 N·m [18 lbf·ft]

- HIC Includes:
- 5/16-18 x 2.0" bolts (4X)
 - (-112) O'rings, Viton (12.37x2.62 mm) (4X)
 - Sub-plate

ORDERING INFORMATION



MM - Motor Mount HICs Catalog
MM-DS-00-DPVLP