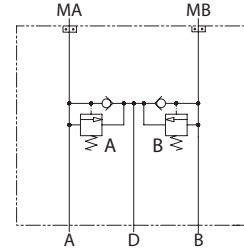


OPERATION

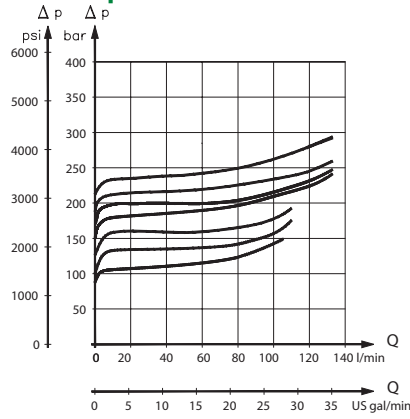
This is a dual shock valve with anticavitation checks that mounts to OMH motors with BSP porting. The PVLP shock valve absorbs short-duration pressure spikes. Do not use it as a full-flow pressure relief valve. For anticavitation protection, connect drain port to reservoir with adequate piping.

Schematic



SPECIFICATIONS

Theoretical performance

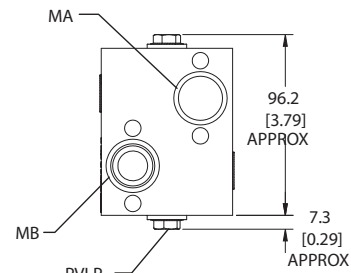
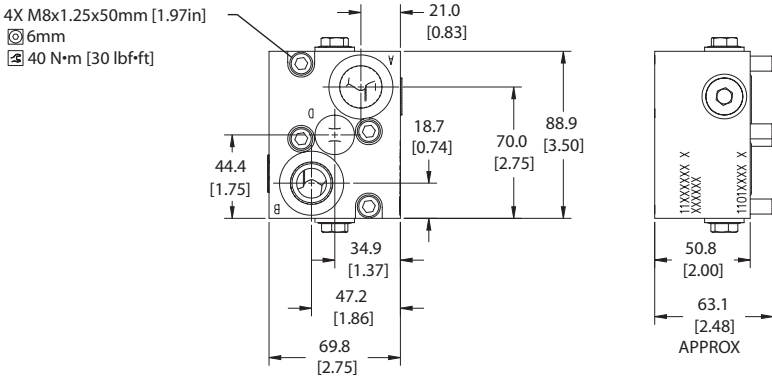


Specifications

Rated pressure	345 bar [5003 psi]
Rated flow at 7 bar [102 psi]	57 l/min [15 US gal/min]
Crack pressure	0.5 bar [7 psi]
Leakage	5 cm ³ /min [0.3 in ³ /min] @ 207 bar [3000 psi]
Weight	2.12 kg [4.67 lb]
Shuttle/drain port	#4 SAE (1/4 BSP)
Service mount kit	11023162
Motor	OMH

DIMENSIONS

Cross-sectional view mm [in]



HIC Includes:
 - M8x50mm bolts (4X)
 - (-119) O'rings, Viton (23.47x2.62 mm) (2X)

ORDERING INFORMATION

MM-OMH-00-DPVLP-175-S4B

Motor mount	Motor code	Secondary valve	Dual shock valve	Housing and ports	Pressure setting (Bar)	Part #
		00 = No valve		S10S = 11L17 or Ductile, #10SAE	100 = 100 bar [1450 psi]	11026360
				S4B = 11L17 or Ductile, 1/2 BSP	125 = 125 bar [1813 psi]	11026361
					150 = 150 bar [2175 psi]	
					175 = 175 bar [2538 psi]	
					190 = 190 bar [2755 psi]	
					210 = 210 bar [3045 psi]	
					230 = 230 bar [3335 psi]	

MM - Motor Mount HICs Catalog
 MM-OMH-00-DPVLP