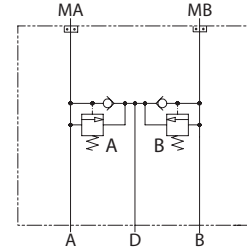


**OPERATION**

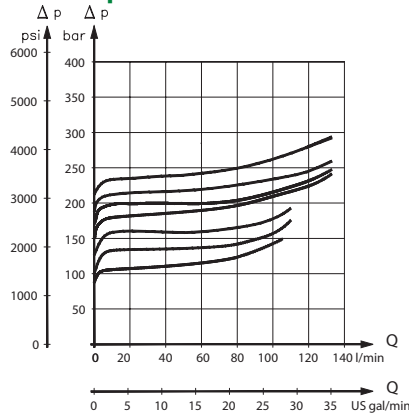
This is a dual shock valve with anticavitation checks that mounts to OMP/OMR motors with BSP porting. The PVLP shock valve absorbs short-duration pressure spikes. Do not use it as a full-flow pressure relief valve. For anticavitation protection, connect drain port to reservoir with adequate piping.

**Schematic**



**SPECIFICATIONS**

**Theoretical performance**



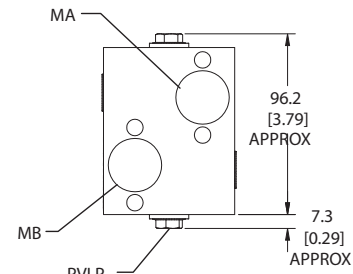
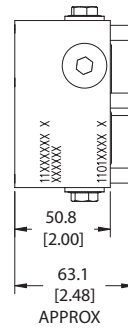
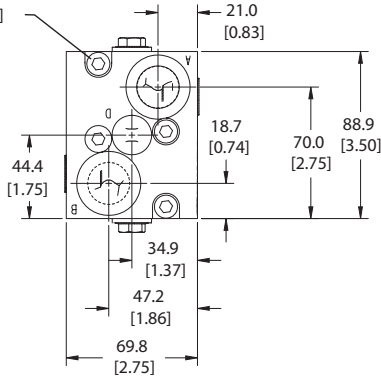
**Specifications**

Rated pressure	345 bar [5003 psi]
Rated flow at 7 bar [102 psi]	57 l/min [15 US gal/min]
Crack pressure	0.5 bar [7 psi]
Leakage	5 cm <sup>3</sup> /min [0.3 in <sup>3</sup> /min] @ 207 bar [3000 psi]
Weight	2.12 kg [4.67 lb]
Shuttle/drain port	#4 SAE (1/4 BSP)
Service mount kit	11023162
Motor	OMP/OMR

**DIMENSIONS**

Cross-sectional view mm [in]

4X M8x1.25x50mm [1.97in]  
⊙6mm  
⊙40 N·m [30 lbf·ft]



HIC Includes:  
- M8x50mm bolts (4X)  
- (-119) O'rings, Viton (23.47x2.62 mm) (2X)

**ORDERING INFORMATION**

**MM-OMP/OMR-00-DPVLP-100-S4B**

Motor mount	Housing and ports	Part #
Motor code	S10S = 11L17 or Ductile, #10SAE	11026360
Secondary valve	S4B = 11L17 or Ductile, 1/2 BSP	11026361
00 = No valve	Pressure setting (Bar)	
Dual shock valve	100 = 100 bar [1450 psi]	
	125 = 125 bar [1813 psi]	
	150 = 150 bar [2175 psi]	
	175 = 175 bar [2538 psi]	
	190 = 190 bar [2755 psi]	
	210 = 210 bar [3045 psi]	
	230 = 230 bar [3335 psi]	