



Proportional Valves Catalog

Flow Control, Pressure Compensated, Priority Type, Normally Open



PFC10-PO

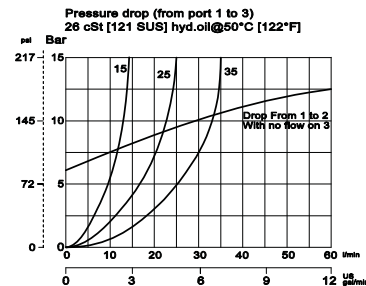
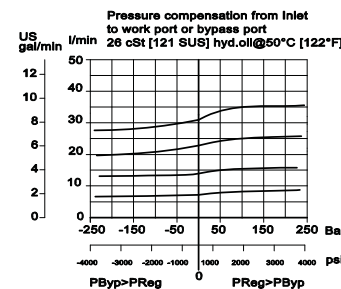
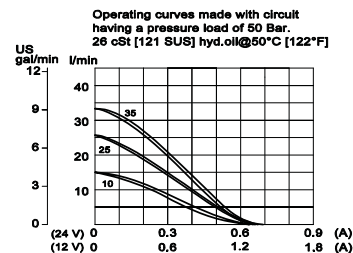
OPERATION

This is a pressure-compensated, priority-type, normally-open, spool-type, proportional flow-control. Controlled flow is from port 1 to 3, port 2 is bypass.

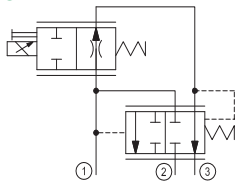
SPECIFICATIONS

Rated pressure	260 bar [3770 psi]
Maximum flow at rated pressure	PFC10-PO-10: 10 l/min [2.64 US gal/min] PFC10-PO-25: 25 l/min [6.6 US gal/min] PFC10-PO-35: 35 l/min [9.25 US gal/min]
Leakage	420 cm ³ /min [25.6 in ³ /min] @ rated pressure
Weight including coil	0.72 kg [1.59 lb]
Hysteresis	8% maximum
Threshold current	0.1 A (12 VDC coil) 0.05 A (24 VDC coil)
Maximum control current	1.8 A (12 VDC coil) 0.9 A (24 VDC coil)
Cavity	SDC10-3
Standard Coil	M19P 22 Watt

Theoretical performance



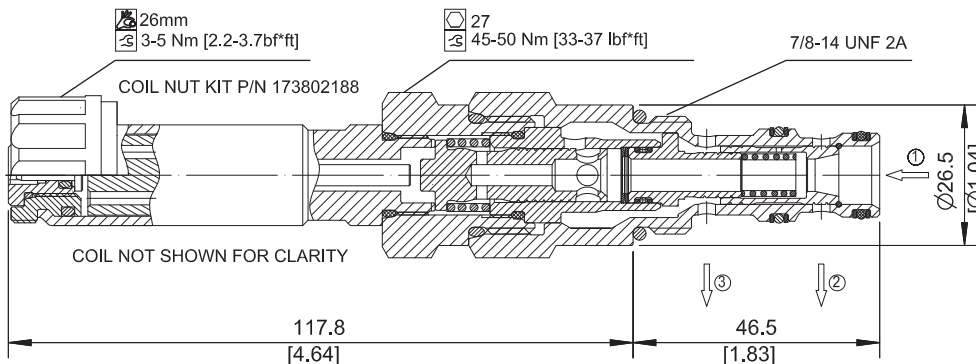
Schematic



DIMENSIONS

mm [in]

Cross-sectional view



ORDERING INFORMATION

PFC10-PO-35-12D-DN-SPS-B-00

Proportional Flow Control Valve, Pressure Compensated, Priority Type, Normally Open, 10 Size Cavity

Code	Max regulated flow
10	10 l/min
25	25 l/min
35	35 l/min

Code	Coil Voltage
00	No Coil
12D	12V DC
24D	24 V DC

Code	Coil Termination
00	No Coil
AJ	Amp Junior
DE	Deutsch
DN	DIN 43650

Code*	Manual Override
Omit	Push Pin (Standard)
SPS	Screw Style (Push-Type Valve)

*PB (Push-Button) available upon request

Code	Seal	Seal Kit
B	Buna-N	35400421
V	Viton	35400371

Body & Ports	Body Nomenclature
00 = No housing	No Body
6S = AL 6S SAE	CP10-3-6S
8S = AL 8S SAE	CP10-3-8S
SE3B = AL 3/8" BSP	SDC10-3-SE3B
SE4B = AL 1/2" BSP	SDC10-SE4B

*Other housings available

Proportional Valves
PFC10-PO