



# Proportional Valves Catalog

Flow Control, Pressure Compensated, Priority Type, Normally Closed



## PFC16-PO

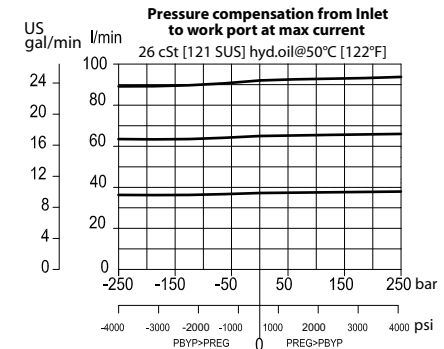
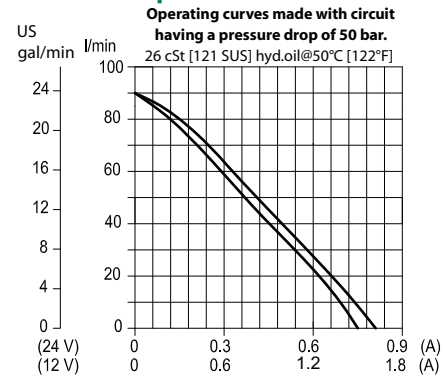
### OPERATION

This is a pressure-compensated, priority-type, normally-open, spool-type, proportional flow-control. Controlled flow is from port 1 to 3, port 2 is bypass.

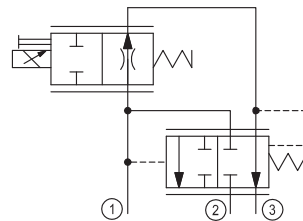
### SPECIFICATIONS

<b>Rated pressure</b>	260 bar [3770 psi]
<b>Rated flow at 260 bar [3771 psi]</b>	90 l/min [24 US gal/min]
<b>Leakage</b>	420 cm <sup>3</sup> /min [25.6 in <sup>3</sup> /min] @ rated pressure
<b>Weight</b>	0.97 kg [2.14 lb]
<b>Hysteresis</b>	8% maximum
<b>Threshold current</b>	0.1 A (12 VDC coil) 0.05 A (24 VDC coil)
<b>Maximum control current</b>	1.8 A (12 VDC coil) 0.9 A (24 VDC coil)
<b>Cavity</b>	SDC16-3
<b>Standard Coil</b>	D14E(35W) 35 Watt

### Theoretical performance



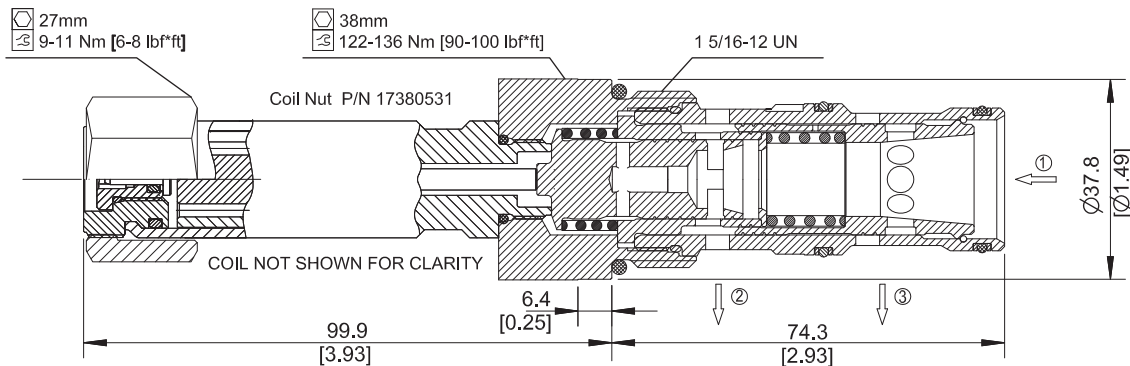
### Schematic



### DIMENSIONS

mm [in]

### Cross-sectional view



### ORDERING INFORMATION

Proportional Flow Control,  
Pressure Compensated, Priority Type,  
Normally Open, 16 Size Cavity

### PFC16-PO - 90 - 12D - DE - SPS - B - 00

Code	Max Regulated Flow
90	90 l/m

Code	Coil Voltage
00	No Coil
12D	12V DC
24D	24V DC

Code	Coil Termination
00	No Coil
AJ	Amp Junior
DE	Deutsch
DN	DIN 43650

Code*	Manual Override
Omit	Push Pin (Standard)
SPS	Screw Style (Push-Type Valve)

\*PB (Push Button) available upon request

Housings & Ports	Housing P/N
00: Cartridge Only	No Housing
6B: 3/4 BSP, AL	SDC16-3-HE-6B
8B: 1 BSP, AL	SDC16-3-HE-8B
12S: #12 SAE, AL	CP16-3-12S
16S: #16 SAE, AL	CP16-3-16S

Other Housings available

Code	Seal Material	Seal kit
B	Buna	354008919
V	Viton	354009019

Proportional Valves  
PFC16-PO