



Proportional Valves Catalog

Flow Control, Pressure Compensated, Restrictive Type, Normally Closed



PFC16-RC

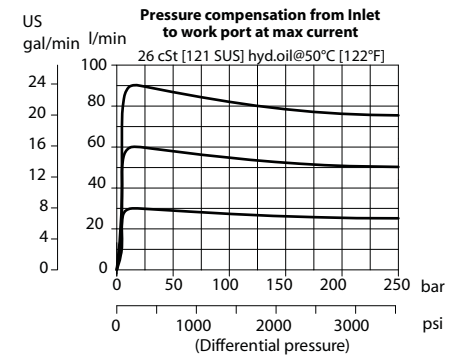
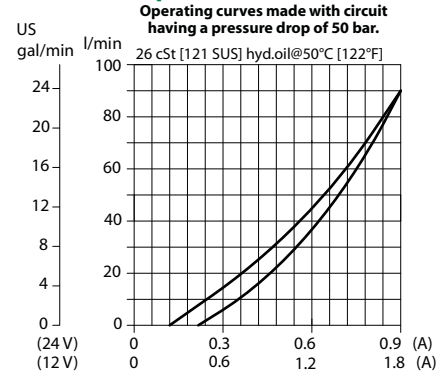
OPERATION

This is a pressure-compensated, restrictive-type, normally-closed, spool-type, proportional Flow control. Controlled flow is from port 1 to 2.

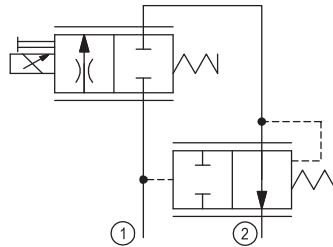
SPECIFICATIONS

Rated pressure	260 bar [3770 psi]
Rated Flow at 260 bar [3771 psi]	90 l/min [24 US gal/min]
Leakage	420 cm ³ /min [25.6 in ³ /min] @ rated pressure
Weight	0.91 kg [2.01 lb]
Hysteresis	8% maximum
Threshold current	0.4 A (12 VDC coil) 0.2 A (24 VDC coil)
Maximum control current	1.8 A (12 VDC coil) 0.9 A (24 VDC coil)
Cavity	SDC16-2
Standard Coil	D14E(35W) 35 Watt

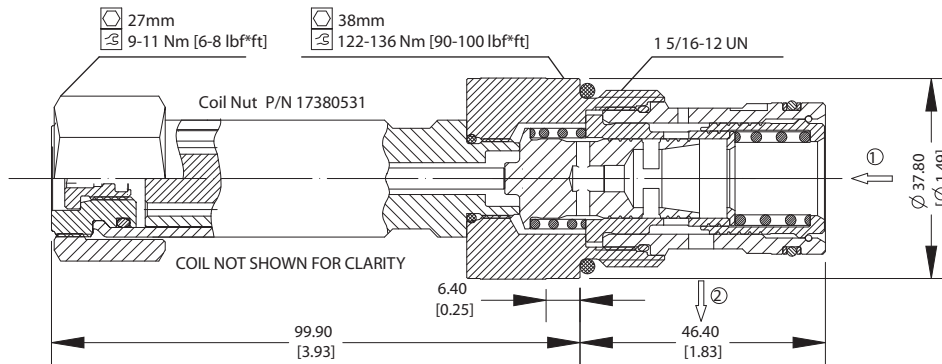
Theoretical performance



Schematic



Cross-sectional view



DIMENSIONS

mm [in]

ORDERING INFORMATION

PFC16-RC-90-12D-DE-SPS-B-00

Proportional Flow Control Valve, Pressure Compensated, Restrictive Type, Normally Closed, 16 Size Cavity

Code	Max regulated flow
90	90 l/m

Code	Coil Voltage
00	No Coil
12D	12V DC
24D	24 V DC

Code	Coil Termination
00	No Coil
AJ	Amp Junior
DE	Deutsch
DN	DIN 43650

Code*	Manual Override
Omit	Push Pin (Standard)
SPS	Screw Style (Push-Type Valve)

*PB (Push-Button) available upon request

Code	Seal	Seal Kit
B	Buna-N	354008719
V	Viton	354008819

Body & Ports	Body Nomenclature
00 = No housing	No Body
DC6B = AL, 3/4 BSP	SDC16-2-DG-6B
DC9B = AL, 1 BSP	SDC16-2-DG-9B
12S = AL, #12 SAE	CP16-2-12S
16S = AL, #16 SAE	CP16-2-16S
Other housings available	

Proportional Valves
PFC16-RC