



# Proportional Valves Catalog

Flow Control, Pressure Compensated, Restrictive Type, Normally Open



## PFC16-RO

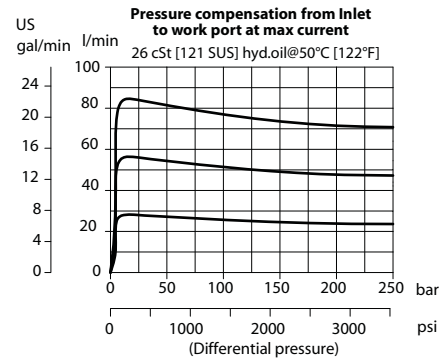
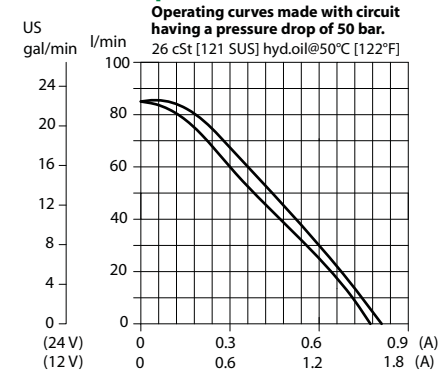
### OPERATION

This is a pressure-compensated, restrictive-type, normally-open, spool-type, proportional flow-control. Controlled flow is from port 1 to 2.

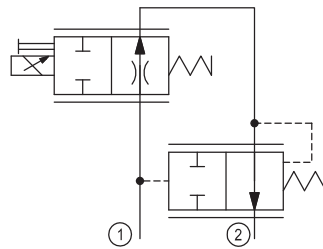
### SPECIFICATIONS

<b>Rated pressure</b>	260 bar [3770 psi]
<b>Rated Flow at 260 bar [3771 psi]</b>	85 l/min [22 US gal/min]
<b>Leakage</b>	420 cm <sup>3</sup> /min [25.6 in <sup>3</sup> /min] @ Rated pressure
<b>Weight</b>	0.91 kg [2.01 lb]
<b>Hysteresis</b>	8% maximum
<b>Threshold current</b>	0.2 A (12 VDC coil) 0.1 A (24 VDC coil)
<b>Maximum control current</b>	1.8 A (12 VDC coil) 0.9 A (24 VDC coil)
<b>Cavity</b>	SDC16-2
<b>Standard Coil</b>	D14E(35W) 35 Watt

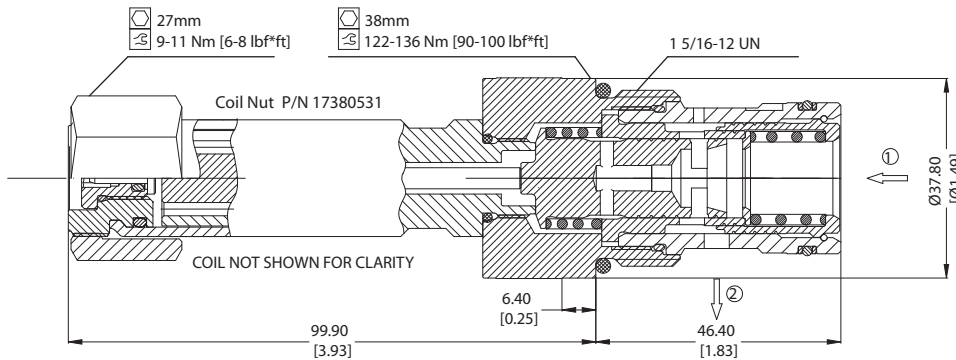
### Theoretical performance



### Schematic



### Cross-sectional view



### DIMENSIONS

mm [in]

### ORDERING INFORMATION

**PFC16-RO-85-12D-DE-SPS-B-00**

Proportional Flow Control Valve, Pressure Compensated, Restrictive Type, Normally Open, 16 Size Cavity

Code	Max regulated flow
85	85 l/min

Code	Coil Voltage
00	No Coil
12D	12V DC
24D	24 V DC

Code	Coil Termination
00	No Coil
AJ	Amp Junior
DE	Deutsch
DN	DIN 43650

Code	Seal	Seal Kit
B	Buna-N	354008719
V	Viton	354008819

Code*	Manual Override
Omit	Push Pin (Standard)
SPS	Screw Style (Push-Type Valve)

Code	Body & Ports	Body Nomenclature
00	No housing	No Body
DG8B	Al, 3/4 BSP	SDC16-2-DG-8B
DG8B	Al, 1 BSP	SDC16-2-DG-8B
12S	Al, #12 SAE	CP16-2-12S
16S	Al, #16 SAE	CP16-2-16S

\*PB (Push-Button) available upon request

Other housings available

Proportional Valves  
PFC16-RO