



# Proportional Valves Catalog

Flow Control, Non-Compensated, Normally Closed, Poppet Type



## PSVP12-NCR

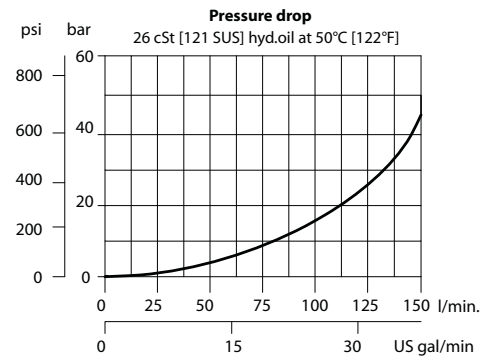
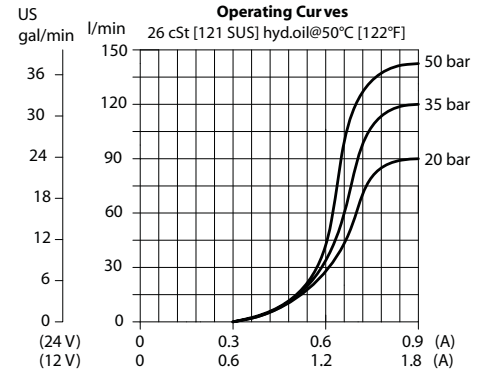
### OPERATION

This is a non-compensated, normally-closed, pilot-operated, poppet-type, proportional flow-control. Controlled flow is from port 2 to 1.

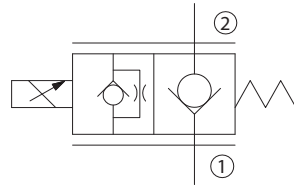
### SPECIFICATIONS

<b>Rated pressure</b>	260 bar [3770 psi]
<b>Rated flow at 10 bar [150 psi]</b>	70 l/min [18 US gal/min]
<b>Leakage</b>	6 drops/min @ rated pressure
<b>Weight</b>	0.60 kg [1.32 lb]
<b>Hysteresis</b>	8% maximum
<b>Cavity</b>	SDC12-2
<b>Standard Coil</b>	M19P 22 Watt

### Theoretical performance

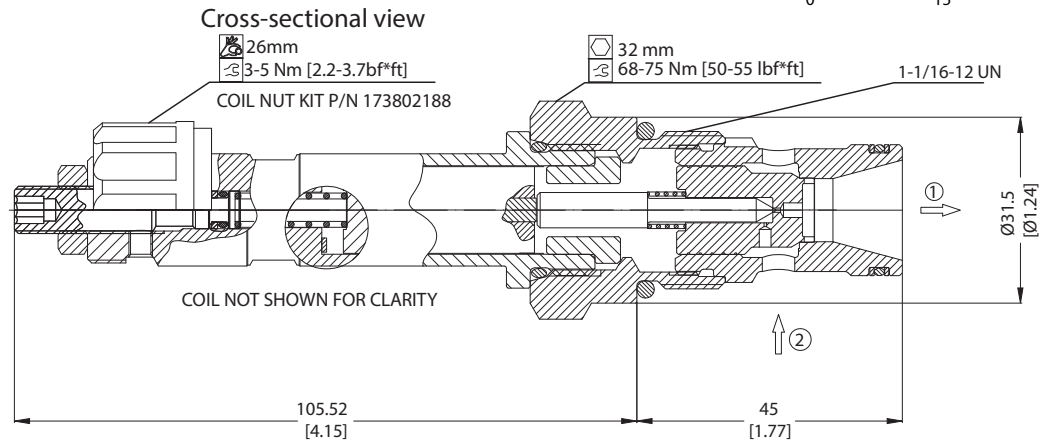


### Schematic



### DIMENSIONS

mm [in]



### ORDERING INFORMATION

PSVP12-NCR-12D-DE-B-00

Proportional Flow Control Valve,  
Non-Compensated, Poppet Type,  
Normally Closed, Free Reverse Flow,  
12 Size Cavity

Code	Coil Voltage
00	No Coil
12D	12V DC
24D	24 V DC

Code	Coil Termination
00	No Coil
AJ	Amp Junior
DE	Deutsch
DN	DIN 43650

Code	Seal	Seal Kit
B	Buna-N	354008319
V	Viton	354008419

Body & Ports	Body Nomenclature
00 = No housing	No Body
10S = Al. #10 SAE	CP12-2-10S
12S = Al. #12 SAE	CP12-2-12S
DG4B = Al. 1/2 BSP	SDC12-2-DG4B
DG6B = Al. 3/4 BSP	SDC12-2-DG6B
Other housings available	

Proportional Valves  
PSVP12-NCR