



# Proportional Valves Catalog

Flow Control, Non-Compensated, Normally Closed, Poppet Type



## PSVP16-NCR

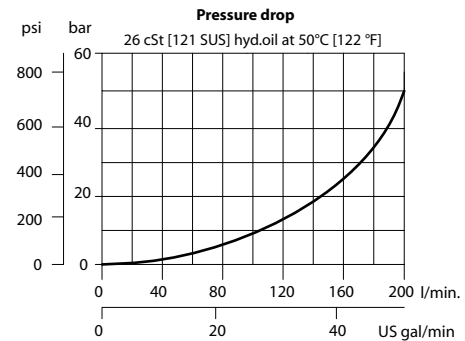
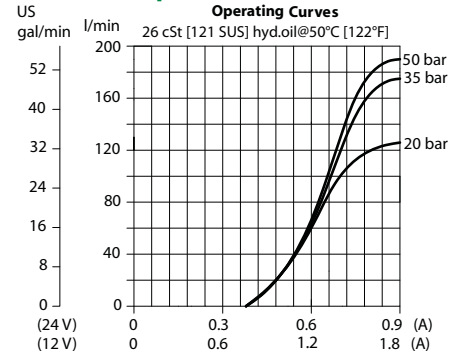
### OPERATION

This is a non-compensated, normally-closed, pilot-operated, poppet-type, proportional flow-control. Controlled flow is from port 2 to 1.

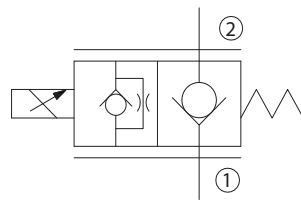
### SPECIFICATIONS

<b>Rated pressure</b>	260 bar [3770 psi]
<b>Rated flow at 10 bar [150 psi]</b>	90 l/min [24 US gal/min]
<b>Leakage</b>	6 drops/min @ rated pressure
<b>Weight</b>	0.85 kg [1.87 lb]
<b>Hysteresis</b>	8% maximum
<b>Cavity</b>	SDC16-2
<b>Standard Coil</b>	M19P 22 Watt

### Theoretical performance



### Schematic



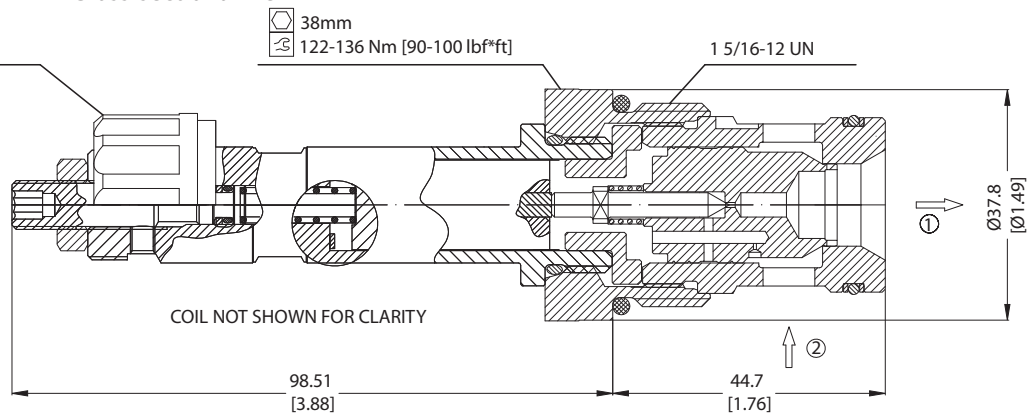
### DIMENSIONS

mm [in]

- 26mm
- 3-5 Nm [2.2-3.7bf\*ft]

COIL NUT KIT P/N 173802188

### Cross-sectional view



### ORDERING INFORMATION

PSVP16 - NCR - 12D - DE - B - 00

Proportional Flow Control Valve, Non-Compensated, Poppet Type, Normally Closed, Free Reverse Flow, 16 Size Cavity

Code	Coil Voltage
00	No Coil
12D	12V DC
24D	24 V DC

Code	Coil Termination
00	No Coil
AJ	Amp Junior
DE	Deutsch
DN	DIN 43650

Code	Seal	Seal Kit
B	Buna-N	354008719
V	Viton	354008819

Body & Ports	Body Nomenclature
00 = No housing	No Body
DG8B = Al, 3/4 BSP	SDC16-2-DG-8B
DG8B = Al, 1 BSP	SDC16-2-DG-8B
12S = Al, #12 SAE	CP16-2-12S
16S = Al, #16 SAE	CP16-2-16S
Other housings available	