



# Proportional Valves Catalog

Flow Control, Non-Compensated, Normally Open, Poppet Type



## PSVP10-NOR

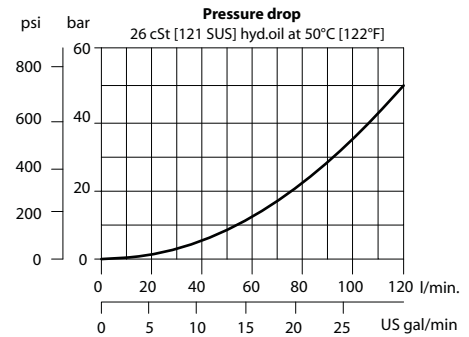
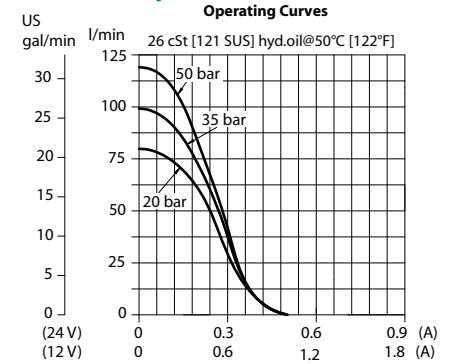
### OPERATION

This is a non-compensated, normally-open, pilot-operated, poppet-type, proportional flow-control. Controlled flow is from port 2 to 1.

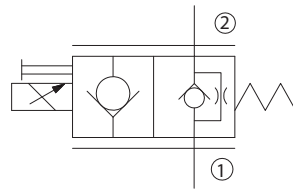
### SPECIFICATIONS

<b>Rated pressure</b>	260 bar [3770 psi]
<b>Rated flow at 10 bar [145 psi]</b>	45 l/min [12 US gal/min]
<b>Leakage</b>	6 drops/min @ Rated pressure
<b>Weight</b>	0.54 kg [1.19 lb]
<b>Hysteresis</b>	8% maximum
<b>Cavity</b>	SDC10-2
<b>Standard Coil</b>	M19P 22 Watt

### Theoretical performance



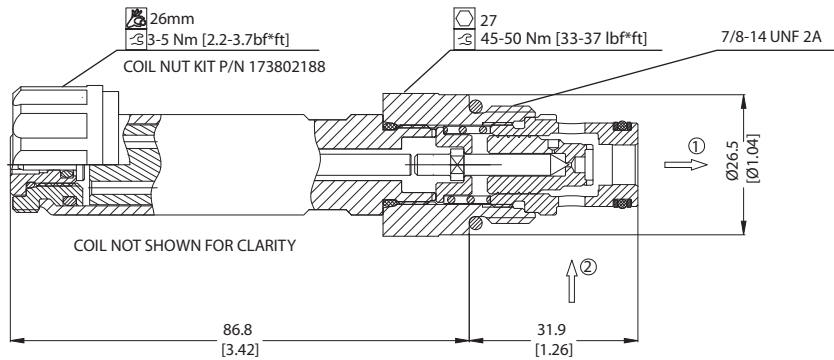
### Schematic



### DIMENSIONS

mm [in]

### Cross-sectional view



### ORDERING INFORMATION

PSVP10-NOR-12D-DE-SPS-B-00

Proportional Flow Control Valve, Non-Compensated, Poppet Type, Normally Open, Free Reverse Flow, 10 Size Cavity

Code	Coil Voltage
00	No Coil
12D	12V DC
24D	24 V DC

Code	Coil Termination
00	No Coil
AJ	Amp Junior
DE	Deutsch
DN	DIN 43650

Code*	Manual Override
Omit	Push Pin (Standard)
SPS	Setaw Style (Push-Type Valve)

\*PS (Push-Button) available upon request

Code	Seal	Seal Kit
B	Buna-N	354004019
V	Viton	354003419

Body & Ports	Body Nomenclature
00 = No housing	No Body
ES = AI, #6 SAE	CP10-2-6S
BS = AI, #8 SAE	CP10-2-8S
DG3B = AI, 3/8 BSP	SDC10-2-DG3B
DG4B = AI, 1/2 BSP	SDC10-2-DG4B
Other housings available	