



# Proportional Valves Catalog

Flow Control, Non-Compensated, Normally Open, Poppet Type



## PSVP12-NOR

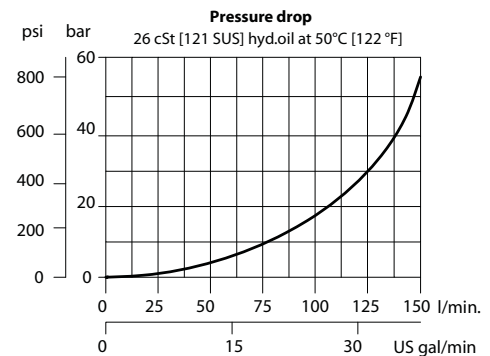
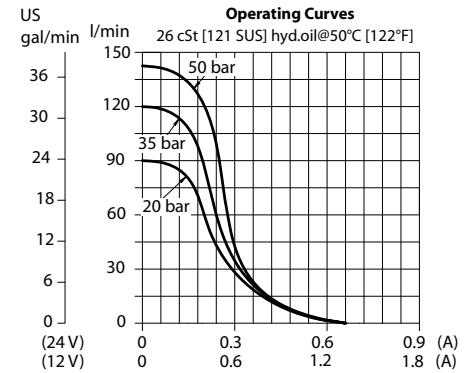
### OPERATION

This is a non-compensated, normally-open, pilot-operated, poppet-type, proportional flow-control. Controlled flow is from port 2 to 1.

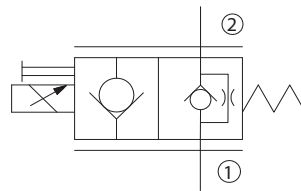
### SPECIFICATIONS

<b>Rated pressure</b>	260 bar [3770 psi]
<b>Rated flow at 10 bar [150 psi]</b>	70 l/min [18 US gal/min]
<b>Leakage</b>	6 drops/min @ Rated pressure
<b>Weight</b>	0.60 kg [1.32 lb]
<b>Hysteresis</b>	8% maximum
<b>Cavity</b>	SDC12-2
<b>Standard Coil</b>	M19P 22 Watt

### Theoretical performance

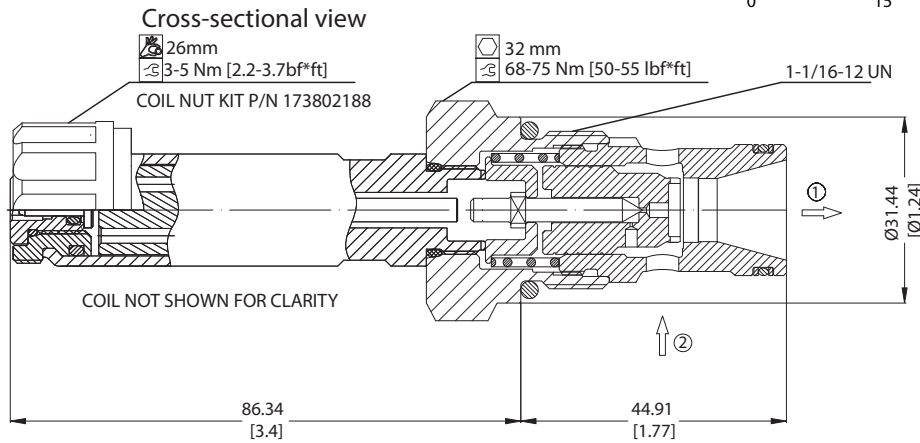


### Schematic



### DIMENSIONS

mm [in]



### ORDERING INFORMATION

PSVP12-NOR-12D-DE-SPS-B-00

Proportional Flow Control Valve, Non-Compensated, Poppet Type, Normally Open, Free Reverse Flow, 12 Size Cavity

<b>Code</b>	<b>Coil Voltage</b>	<b>Code</b>	<b>Coil Termination</b>	<b>Code*</b>	<b>Manual Override</b>	<b>Code</b>	<b>Seal</b>	<b>Seal Kit</b>
00	No Coil	00	No Coil	Omit	Push Pin (Standard)	B	Buna-N	35400319
12D	12V DC	AJ	Amp Junitor	SPS	Screw Style (Push-Type Valve)	V	Viton	354008419
24D	24 V DC	DE	Deutsch					
		DN	DIN 43650					

<b>Body &amp; Ports</b>	<b>Body Nomenclature</b>
00 = No housing	No Body
10S = Al, #10 SAE	CP12-2-10S
12S = Al, #12 SAE	CP12-2-12S
DG4B = Al, 1/2 BSP	SDC12-2-DG4B
DG6B = Al, 3/4 BSP	SDC12-2-DG6B
*Other housings available	

Proportional Valves  
PSVP12-NOR