



# Proportional Valves Catalog

## Flow Control, Non-Compensated, Normally Open PSV12-NO



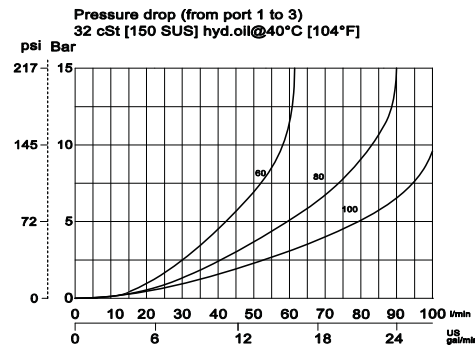
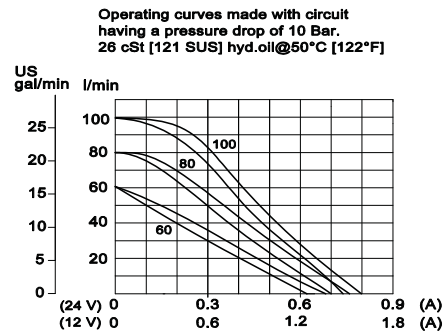
### OPERATION

This is a normally-open, direct-acting, spool-type, non-compensated, proportional flow-control. Controlled flow is from port 1 to 2.

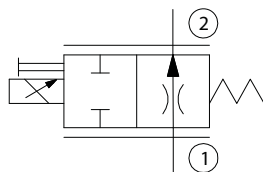
### SPECIFICATIONS

<b>Rated pressure</b>	260 bar [3770 psi]
<b>Maximum flow at 10 bar [145 psi]</b>	PSV12-NO-60: 60 l/min [15.85 US gal/min] PSV12-NO-80: 80 l/min [31.13 US gal/min] PSV12-NO-100: 100 l/min [26.41 US gal/min]
<b>Leakage</b>	420 cm <sup>3</sup> /min [25.6 in <sup>3</sup> /min] @ rated pressure
<b>Weight</b>	0.76 kg [1.68 lb]
<b>Hysteresis</b>	5% maximum
<b>Threshold current</b>	0.3 A (12 VDC coil) 0.15 A (24 VDC coil)
<b>Maximum control current</b>	1.8 A (12 VDC coil) 0.9 A (24 VDC coil)
<b>Cavity</b>	SDC12-2
<b>Standard Coil</b>	D14E(35W) 35 Watt

### Theoretical performance

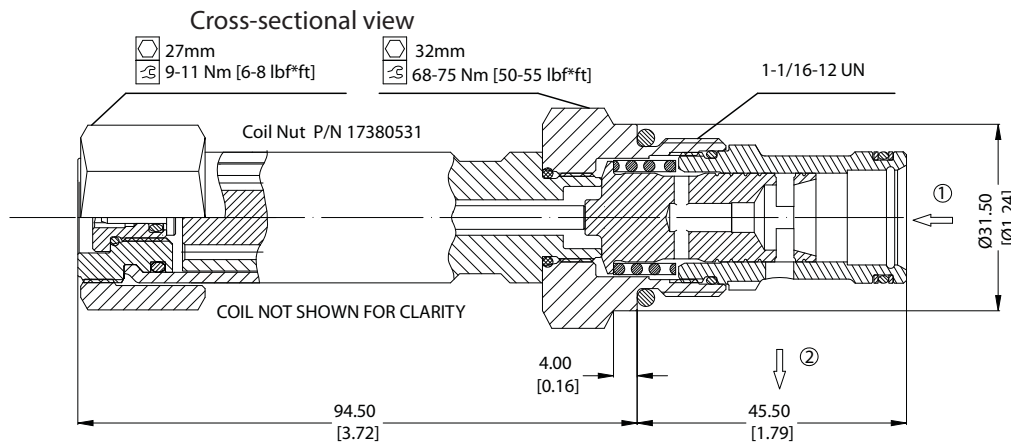


### Schematic



### DIMENSIONS

mm [in]



### ORDERING INFORMATION

PSV12-NO-100-12D-DE-SPS-B-00

Proportional Flow Control Valve, Non-Compensated, Normally Open, 12 Size Cavity

Code	Max regulated flow
60	60 l/m
80	80 l/m
100	100 l/m

Code	Coil Voltage
00	No Coil
12D	12V DC
24D	24 V DC

Code	Coil Termination
00	No Coil
AJ	Amp Junior
DE	Deutsch
DN	DIN 43650

Code	Seal	Seal Kit
B	Buna-N	354008319
V	Viton	354008419

Code*	Manual Override
Omit	Push Pin (Standard)
SPS	Screw Style (Push-Type)* Valve

\*PB (Push-Button) available upon request

Body & Ports	Body Nomenclature
00 = No housing	No Body
10S = AL #10 SAE	CP12-2-10S
12S = AL #12 SAE	CP12-2-12S
DG4B = AL 1/2 BSP	SDC12-2-DG4B
DG6B = AL 3/4 BSP	SDC12-2-DG6B
Other housings available	

Proportional Valves  
PSV12-NO