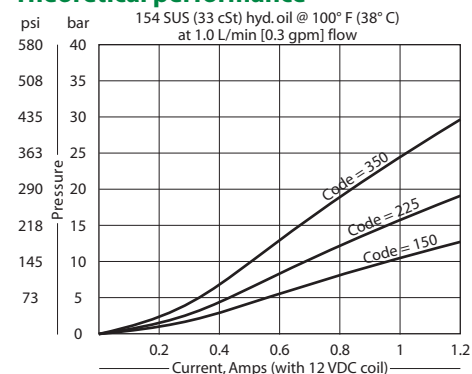
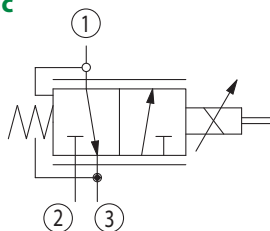


OPERATION

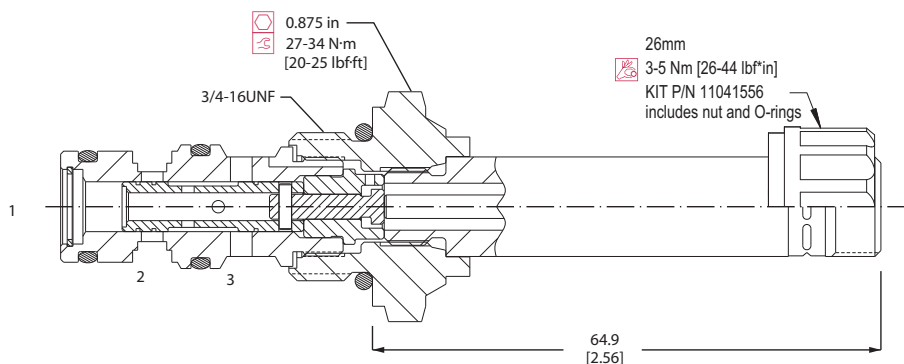
This valve is a direct acting, proportional, pressure reducing/relieving valve.

SPECIFICATIONS

Rated pressure	34 bar [500 psi]
Rated flow at 7 bar [100 psi]	4 l/min [1 US gal/min]
Weight	0.27 kg [0.60 lb]
Hysteresis	10% maximum
Threshold current	0.1 A (12 VDC coil) 0.05 A (24 VDC coil)
Maximum control current	1 A (12 VDC coil) 0.5 A (24 VDC coil)
Cavity	SDC08-3
Standard Coil	D08 16 Watt
Coil nut	322399

Theoretical performance**Schematic****DIMENSIONS**

mm [in]

Cross-sectional view**ORDERING INFORMATION**

CP558-24-B-4S-150-12D-H		
Seals	Seal Kit	Voltage
B = Buna-N	11016151	000 = No coil
V = Viton	120708	12D = 12 VDC coil
		24D = 24 VDC coil
Housing and ports	Housing P/N	Pressure Code
00 = No Housing	No Housing	150 = 10.3 bar [150 psi]
SE2B = AL, 1/4 BSP	SDC08-3-SE-2B	225 = 15.5 bar [225 psi]
SE3B = AL, 3/8 BSP	SDC08-3-SE-3B	350 = 24.1 bar [350 psi]
4S = AL, #4 SAE	CP08-3-4S	
6S = AL, #6 SAE	CP08-3-6S	
		Connector
		0 = No connector
		H = DIN 43650
		L = Lead
		S = Spade
		AJ = Amp Junior
		M2 = Metripak 150
		Type 1
		DE = Deutsch