



Proportional Valves Catalog

Pressure Reducing/Relieving, Piloted, Normally Closed

PPR10-PAC



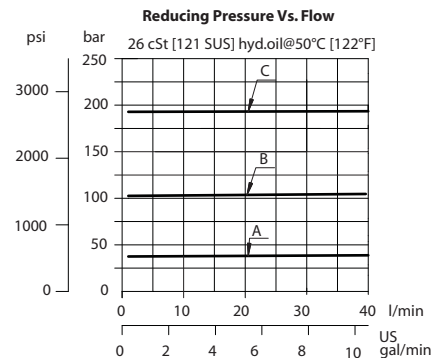
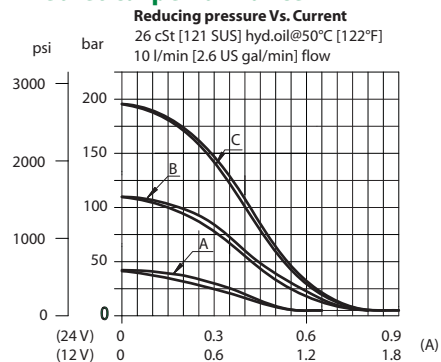
OPERATION

This is a pilot-operated, proportional pressure-reducing/relieving valve (Normally closed).

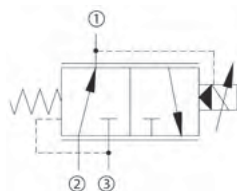
SPECIFICATIONS

Rated pressure	250 bar (3625 psi)
Rated flow at 7 bar [100 psi]	18 l/min [5 US gal/min]
Weight	0.62 kg [1.37 lb]
Hysteresis	10% maximum
Threshold current	0 A (12 VDC coil) 0 A (24 VDC coil)
Maximum control current	1.4 A (12 VDC coil) 0.7 A (24 VDC coil)
Cavity	SDC10-3
Standard Coil	M19P 22 Watt

Theoretical performance



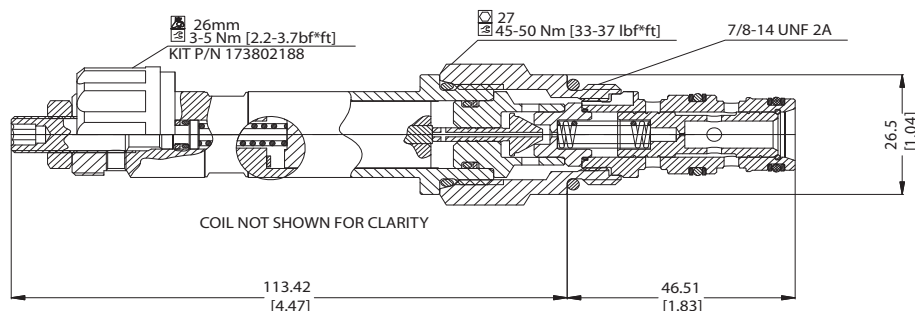
Schematic



DIMENSIONS

mm [in]

Cross-sectional view



ORDERING INFORMATION

PPR10-PAC-40-A-12D-DN-B-00

Cracking pressure

Code = Setting in Bar

Std. setting

40 = 40 bar setting (type A)

100 = 100 bar setting (type B)

200 = 200 bar setting (type C)

Pressure range

A= 20 - 60 bar [360 - 940 psi] Max inlet pressure 150 Bar

B= 70 - 150 bar [960-2250 psi]

C= 160 - 210 bar [2260-3120 psi]

Coil voltage

12D=12VDC

24D=24VDC

00=No Coil

Housing and ports

00 = Cartridge only

6S = Al, #6 SAE

8S = Al, #8 SAE

SE3B = Al, 3/8" BSP

SE4B = Al, 1/2" BSP

Other housing available

Coil termination

00 = No coil, nut included

AJ = AMP Junior

DE = Deutch

DN = DIN 46650

FL = Flying leads (140mm lead length standard)

Housing Nomenclature

No Body

CP10-3-6S

CP10-3-8S

SDC10-3-SE3B

SDC10-3-SE4B

Seals

B = Buna-N

V = Viton

Seals kit

354004210

354003719