



OPERATION

Proportional Pressure Reducing / Relieving Valve, Pilot Operated, Normally Open to Drain. With no current to the coil, the “reduced pressure” (port 3) is connected to drain (port 4), while blocking the inlet (port 2). As current is increased to the coil, inlet (port 2) is connected to “reduced pressure” (port 3), proportionally increasing the “reduced pressure” as shown on the performance curve(s). If the “reduced pressure” exceeds the setting induced by the coil, pressure is relieved to drain (port 4). This 09 Series valve uses a 10 size cavity with an 08 size tube and coil, providing an optimal product for high flow and low pressure, while minimizing pressure drop in the system. This valve was formerly branded as XRP 044.



Shown with Standard Coil and Filter



Shown with Robust Coil and Filter

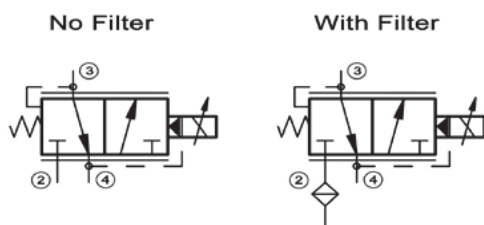
APPLICATION

Common applications include low-pressure proportional pilot control of clutches or hydraulically piloting large directional spool valves. Refer to example circuits. Use the optional screen to help protect the actuator from large particles. Select the robust coil for those extreme environmental conditions – voltage extremes, high temperature, shock & vibration, chemicals, and/or water ingress.

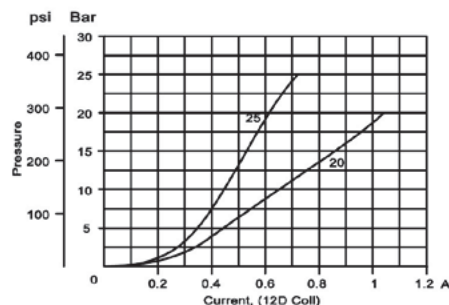
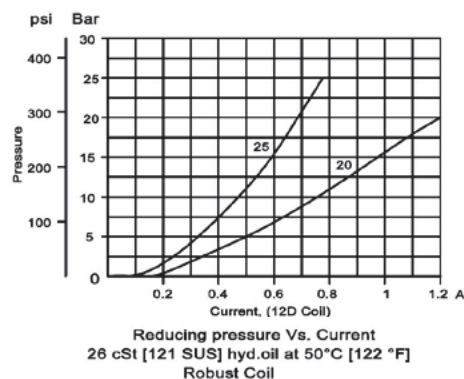
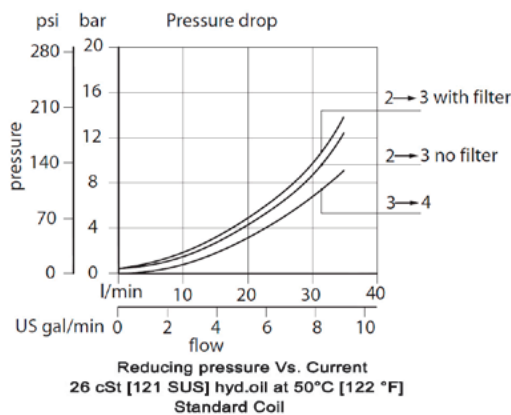
SPECIFICATIONS

Rated pressure	50 bar [725 psi]
Rated flow at 7 bar [100 psi]	25 l/min [7 US gal/min]
Weight	0.34 kg [0.75 lb]
Hysteresis	6% maximum
Threshold current	0.15 A (12 VDC coil) 0.08 A (24 VDC coil)
Maximum control current	1.2 A (12 VDC coil) 0.6 A (24 VDC coil)
Cavity	SDC10-4
Standard Coil	M13 20 Watt
Robust Coil	R13 16 Watt Robust Nut P/N 173800539 No coil O-rings needed.

Schematic(s)



Performance Curves

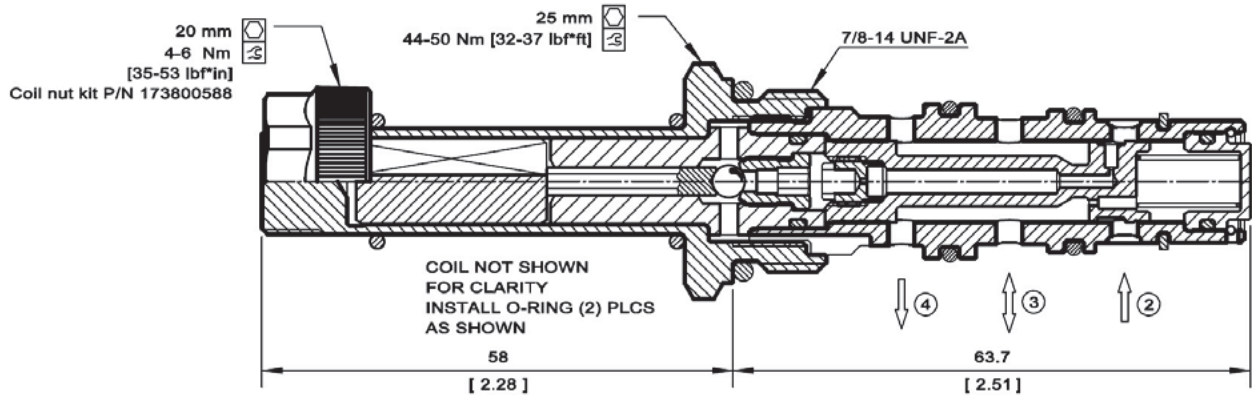




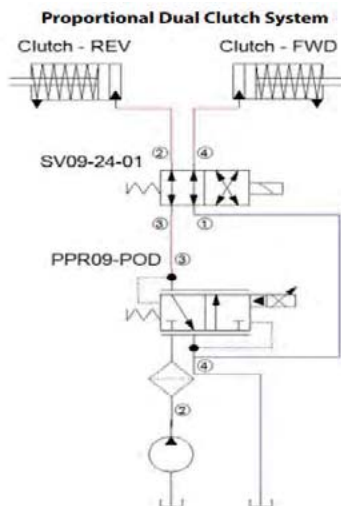
DIMENSIONS

mm [in]

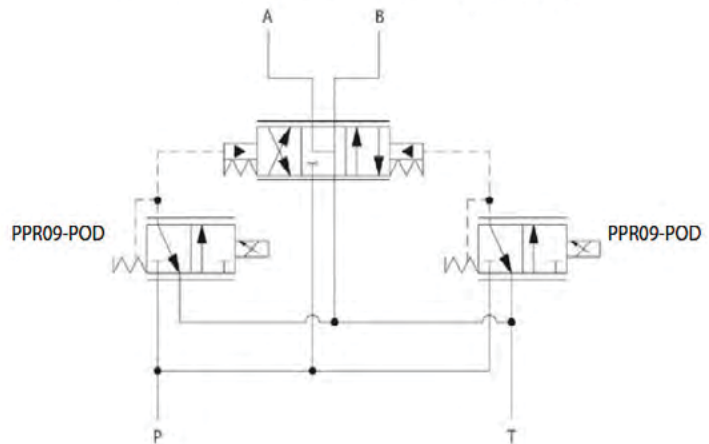
Cross-sectional view



EXAMPLE APPLICATION CIRCUITS



Proportional Pilot Control for Directional Spool Valve



Proportional Valves
PPR09-POD

ORDERING INFORMATION

PPR09-POD - 25 - 12D - DN - V - F - 00

- | | | |
|--|---|--|
| Setting Range
20 = 0-20 bar [0-290 psi]
25 = 0-25 bar [0-360 psi] | Body and ports
00 = No Housing
6S = AL, #6 SAE
8S = AL, #8 SAE
L3B = AL, 3/8 BSP
L4B = AL, 1/2 BSP
Other housings available | Body Nomenclature
No Body
CP10-4-6S
CP10-4-8S
SDC10-4-L-3B
SDC10-4-L-4B |
| Coil voltage
00 = No Coil
12D = 12 VDC (Standard Coil)
24D = 24 VDC (Standard Coil)
R12D = 12 VDC (R-Coil)
R24D = 24 VDC (R-Coil) | Filter 300 µm
00 = No Filter
F = With Filter | |
| Coil termination:
00 = No Coil
FL = Flying Lead
DN = DIN 43650 *
DE = Deutsch
AJ = Amp Junior *
SP = Spade
AS = AMP SuperSeal 1.5 and Metri-Pack 150 type 1 | Seals
B = Buna-N
V = Viton | Seals kit
230000760
230001030 |

* These terminations are not available on robust coil (R12D, R24D)