

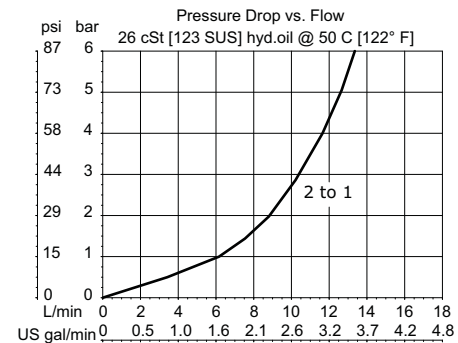
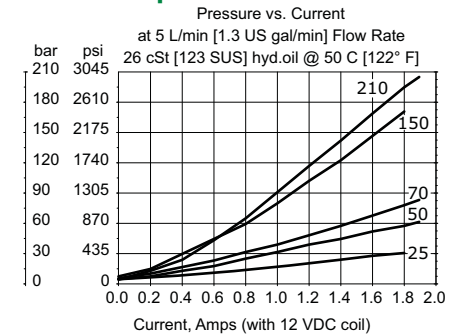
## OPERATION

This is a pilot-operated, proportional pressure reducing/relieving valve.

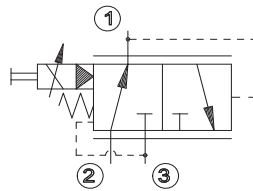
## SPECIFICATIONS

<b>Rated pressure</b>	315 bar [4500 psi]
<b>Rated flow at 7 bar [100 psi]</b>	25 l/min [7 US gal/min]
<b>Weight</b>	0.55 kg [1.21 lb]
<b>Hysteresis</b>	3% maximum
<b>Threshold current</b>	0 A (12 VDC coil) 0 A (24 VDC coil)
<b>Maximum control current</b>	1.8 A (12 VDC coil) 0.9 A (24 VDC coil)
<b>Cavity</b>	NCS06/3
<b>Standard Coil</b>	M19P 22 Watt

## Theoretical performance



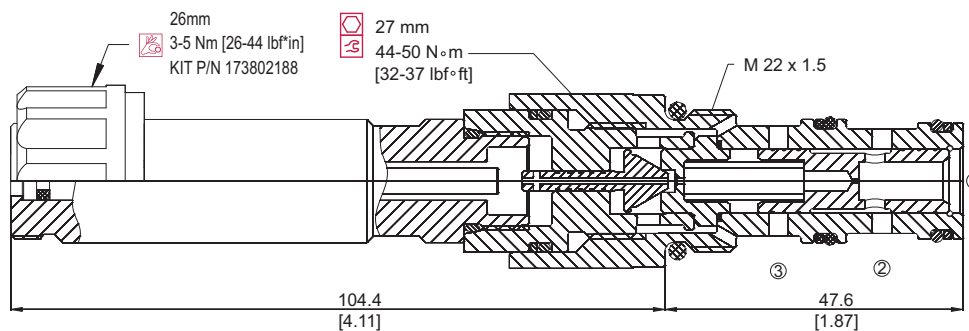
## Schematic



## DIMENSIONS

mm [in]

## Cross-sectional view



## ORDERING INFORMATION

Setting range		Seals		Seals	
25 = 6-25 bar [90-360 psi]		V = Viton	230000110		
50 = 6-55 bar [90-800 psi]		Omit = Buna-N	230000070		
70 = 5-75 bar [90-1100 psi]					
150 = 8-155 bar [120-2200 psi]					
210 = 9-210 bar [130-3100 psi]					
Voltage		Housing and ports		Housing P/N	
00 = No coil		00 = No Housing		No Housing	
12D = 12VDC		SE6S = AL, #6 SAE		NCS06/3-SE-6S	
24D = 24VDC		SE8S = AL, #8 SAE		NCS06/3-SE-8S	
		SE3/8 = AL, 3/8 BSP		NCS06/3-SE-3/8	
		SE1/2 = AL, 1/2 BSP		NCS06/3-SE-1/2	
Termination		Manual override			
00 = No connector	DN = DIN 43650 (ISO 4400)	00 = Push control (Standard)			
AJ = AMP Jr	DN1 = "DN" w/Connector	EN = Screw control			
DE = Deutsch	FL600 = Lead wires				

XRP 06 - 70 - 12D - DE - EN - 00 - V