



# Proportional Valves Catalog

## Pressure Relieving, Direct Acting, Normally Closed

### HPRV08-DAC



### OPERATION

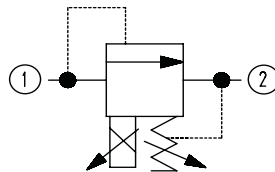
This is a direct acting, normally closed, proportional pressure relief valve.

### SPECIFICATIONS

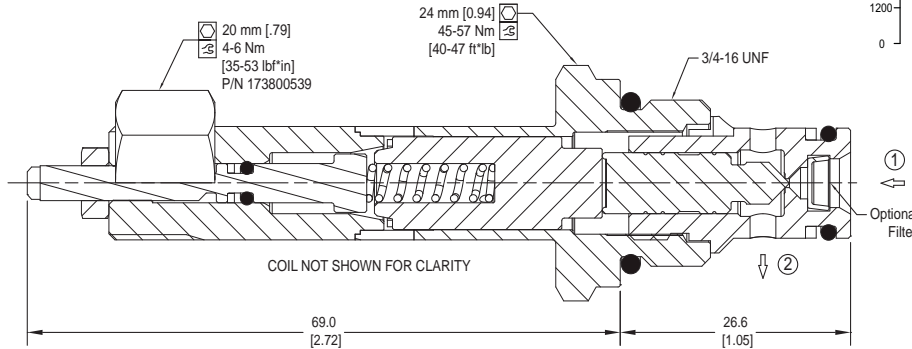
<b>Rated pressure</b>	350 bar [5075 psi]
<b>Maximum recommended flow</b>	1.89 l/min [0.5 US gal/min]
<b>Hysteresis</b>	5% maximum
<b>Threshold current</b>	0 A (12 VDC coil) 0 A (24 VDC coil)
<b>Maximum control current</b>	0.8 A (12 VDC coil) 0.4 A (24 VDC coil)
<b>Standard maximum setting</b>	350 bar [5075 psi]
<b>Cavity</b>	SDC08-2
<b>Coil</b>	R13 16 Watt

Note: A PWM frequency of 50 Hz is recommended for optimal performance.

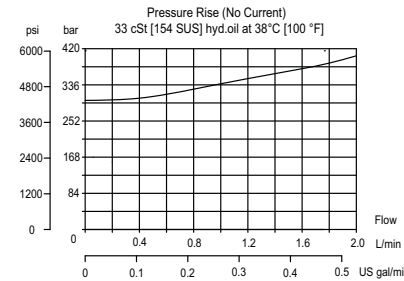
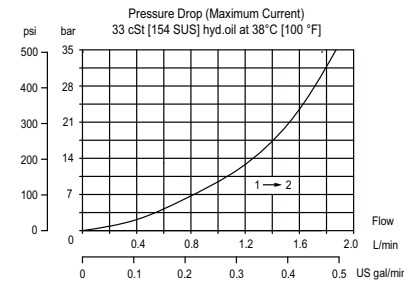
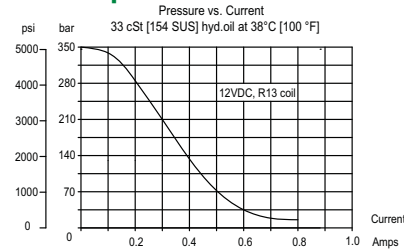
### Schematic



Cross-sectional view



### Theoretical performance



### DIMENSIONS

mm [in]

### ORDERING INFORMATION

**HPRV08-DAC-350-D-E-R12D-DE-B-F-4S**

High Pressure, Proportional Relief Valve, 08 Size, Direct Acting, Normally Closed

**Pressure Setting**  
Option Setting Code (10 bar inc.)  
D 215-350 Bar (3120-5075 psi)

**Maximum Pressure Option**  
Code Max Pressure  
D 350 Bar (5075 psi)

**Adjustment Option**  
Code Adjustment Option  
E External

**Coil Voltage**

Description	Code
No Coil, with nut	R00
12 VDC	R12D
24 VDC	R24D

**Coil Termination**

Type	Code
AMP SuperSeal 1.5	AS
AMP SuperSeal with Diode	ASDB
Deutsch	DE
Desutch with Diode	DEDB
Flying Leads	FL
Flying Leads with Diode	FLDB
Metri-Pack 150 Type 2	M3
Metri-Pack 150 with Diode	M3DB

**Housing and Ports**

Code	Ports & Material	Body Nomenclature
00	Cartridge Only	No Body
S4S	#4 SAE, DUCTILE	CP08-2-S4S
S6S	#6 SAE, DUCTILE	CP08-2-S6S

**Filter Option**

Code	Option
F	Filter
Omit	No Filter

**Seal Option**

Code	Material	Seal Kits
B	Buna	11191986
V	Viton	11191987